

STATE OF CALIFORNIA
DEPARTMENT OF PUBLIC WORKS

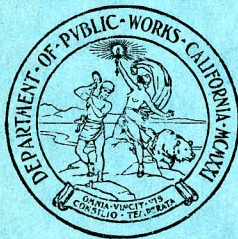
PUBLICATIONS OF THE
DIVISION OF WATER RESOURCES
EDWARD HYATT, State Engineer

BULLETIN No. 21-B

REPORT
ON
IRRIGATION DISTRICTS
IN
CALIFORNIA

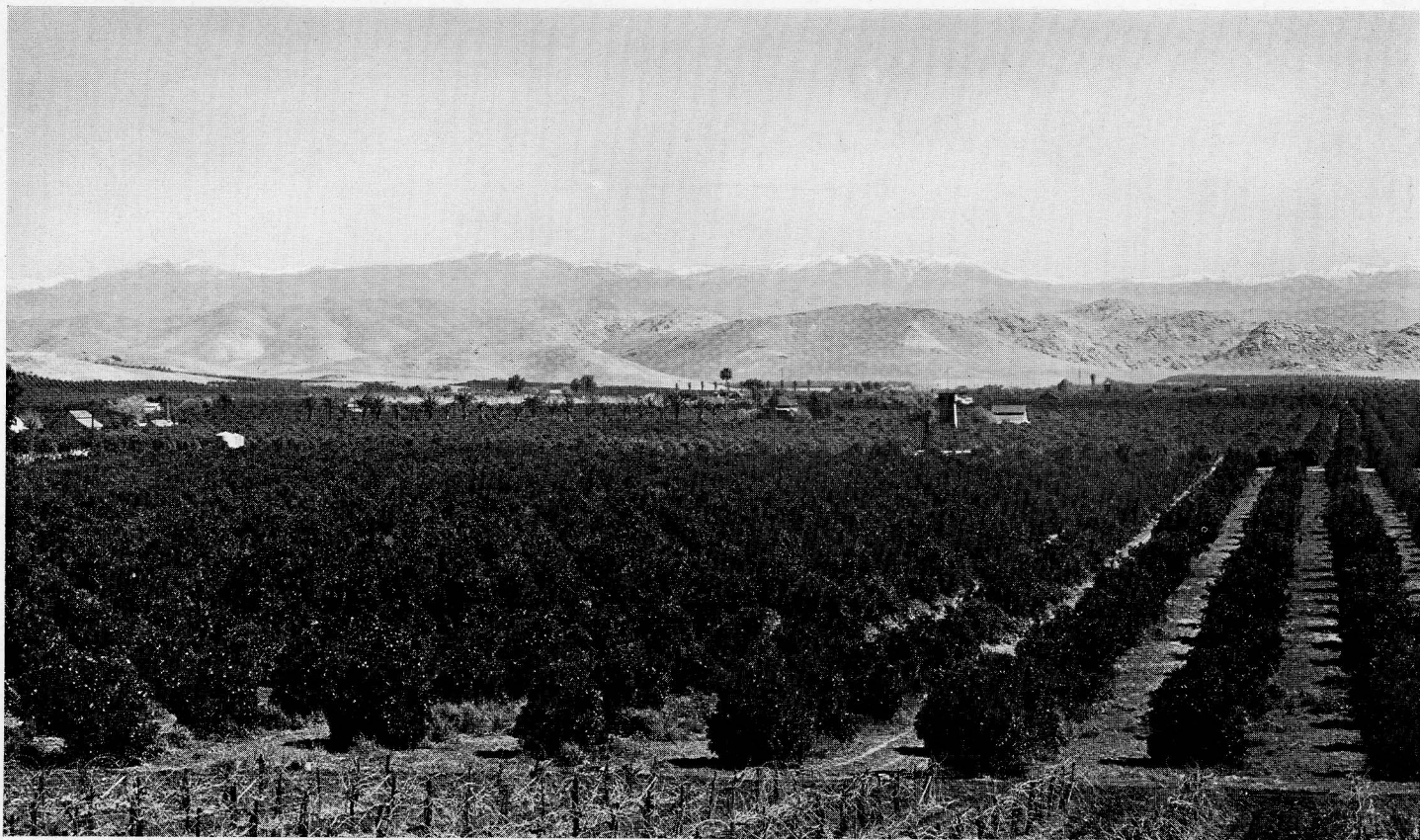
For the Year 1930

1931



CALIFORNIA STATE PRINTING OFFICE
HARRY HAMMOND, STATE PRINTER
SACRAMENTO, 1931

9/20/31



86456

Orange groves, Lindsay-Strathmore Irrigation District

STATE OF CALIFORNIA
DEPARTMENT OF PUBLIC WORKS

PUBLICATIONS OF THE
DIVISION OF WATER RESOURCES
EDWARD HYATT, State Engineer

BULLETIN No. 21-B

REPORT
ON
IRRIGATION DISTRICTS
IN
CALIFORNIA

For the Year 1930

1931

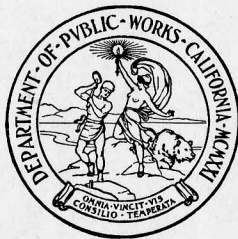


TABLE OF CONTENTS

	Page
ORGANIZATION -----	6
FOREWORD -----	7
CHAPTER I	
INTRODUCTION -----	
Irrigation Development -----	9
Weather Conditions in 1930 -----	9
Crops and Comparative Crop Prices -----	9
Irrigation District Finances -----	10
Irrigation District Legislation -----	11
Irrigation Districts Association -----	12
DIRECTORY OF CALIFORNIA IRRIGATION DISTRICTS -----	14
CHAPTER II	
DISTRICT ORGANIZATIONS -----	
Irrigation Districts -----	17
Irrigation Districts Organized in 1930 -----	17
Richvale Irrigation District -----	17
Districts Other Than Irrigation Districts -----	19
CHAPTER III	
STATISTICAL INFORMATION -----	
Sources of Supply, Storage and Distribution of Water -----	21
Cost per Acre Irrigated -----	21
Areas and Crops -----	21
Assessments, Water Tolls and Other Revenues -----	22
Bonds and Warrants -----	22
Annual Bond Obligations -----	23
Bond Obligations per Acre -----	24
Expenditures Approved from Bonds in 1930 -----	24
Additional Information -----	25
TABLES OF STATISTICAL DATA -----	
I. Data relating to source of supply, storage and distribution of water -----	29
II. Data relating to the average cost per acre irrigated -----	33
III. California irrigation district crop summary for 1930 -----	37
IV. Summary of total assessments levied, tax certificates sold and unredeemed, percentages of assessments delinquent, and water tolls and other revenues collected in California irrigation districts in 1930 -----	41
V. Summary of data relating to bonds and outstanding warrants of California irrigation districts January 1, 1931 -----	45
VI. Annual bond and interest payments to which California irrigation districts are obligated to 1950 -----	57
VII. Bond obligations per acre of California irrigation districts January 1, 1931 -----	75
LIST OF PLATES -----	
I. Orange groves, Lindsay-Strathmore Irrigation District -----	Frontispiece
II. Rate of organization of irrigation districts in California, 1909-1931 -----	12
III. Concrete lined main canal, Turlock Irrigation District -----	13
IV. Richvale Irrigation District, Butte County -----	18
V. Central portion of La Canada Irrigation District -----	20
VI. Diagram showing trend of maturities of outstanding bonds of California irrigation districts as of January 1, 1931 -----	24
VII. A section on crest of Lost Creek Dam, Oroville-Wyandotte Irrigation District -----	25
VIII. Concow Dam, Table Mountain and Thermalito Irrigation Districts -----	25
IX. Typical Branch Canal, Imperial Irrigation District -----	26
PUBLICATIONS OF THE DIVISION OF WATER RESOURCES -----	78

ORGANIZATION

WALTER E. GARRISON-----Director of Public Works

EDWARD HYATT-----State Engineer

A. N. BURCH-----Irrigation District Investigations

RAY S. CARBERRY-----Assistant

FOREWORD

The data contained in this report have been assembled by the office of the State Engineer, Division of Water Resources, Department of Public Works, from information furnished by the irrigation districts of the State. This information has been analyzed and checked, and while it is believed to be substantially correct and reliable, there may be minor inaccuracies in individual cases. Three earlier reports have been published on this subject, giving complete information of irrigation districts and the irrigation district movement in California up to and including 1929. These earlier reports are presented in Bulletin 2 (1916) of the State Department of Engineering, Bulletin 21 (1929) of the Department of Engineering and Irrigation and Bulletin 21-A (1930) of Division of Water Resources. The present report is published for the purpose of continuing this series of bulletins and bringing up to date historical and statistical data on California irrigation districts, and recording such other information as was obtained on irrigation district activities in 1930. It is desired to express the appreciation of this office for the cooperation of district officials. Through their generally prompt response to our requests for information, we have been able to prepare for publication the irrigation district bulletin for 1930 three months earlier in the year than was possible for the 1929 report.

CHAPTER I

INTRODUCTION

Irrigation Development.

The 1930 census figures give the irrigated area of the United States as 19,578,441 acres, of which 4,731,632 acres, or 22 per cent, are in California. Ten of the states had less irrigated land in 1930 than in 1920, while nine show increases. The increase for the decade for all states was 2.3 per cent, while that for California was 12½ per cent. One-half of all of the active irrigation enterprises in the United States are shown to be located in California. The total area irrigated in California irrigation districts in 1930 was 37.8 per cent of all of the land irrigated in the State, and 9.1 per cent of all the land irrigated in the United States.

Weather Conditions in 1930.

Following an unusually dry winter many sections of the State entered the growing season with a deficient supply of soil moisture. This was in some measure compensated for by spring rains, although many crops required extra irrigations. March, April and May were good growing months, without serious frost periods, notwithstanding that the latter month was the coolest May recorded in California since 1897. June to August were seasonably normal, without long periods of excessive heat, as sometimes occur in the interior of the State. September was unusually cool, but October, being warm and unusually dry, was a favorable month for harvesting rice and other crops. Killing frosts occurred in the last week of November. On the whole, 1930 was a most favorable year, with most crops producing in excess of early estimates.

Crops and Comparative Crop Prices.

The unit values of field crops produced in California in 1930 reached about the low level of 1921, and were decidedly lower than for 1929, for which year the prices received for most field crops were not remunerative to the grower. Prices for the principal truck and fruit crops were also at a low ebb. The yields of fruit were generally large and qualities were good. Market conditions were exceedingly unsatisfactory and large quantities of many fruits were left unharvested and were a total loss, while a considerable proportion of clingstone peaches and raisin grapes were purchased at a nominal price by the canning and raisin industries and as a stabilizing measure left on the ground to rot. It is estimated that while there was 35 per cent more of the principal tree fruits and grapes actually harvested in 1930 than in 1929, the total returns for 1930 were only 76 per cent of the total for 1929. As indicative of the general and abrupt slump in returns to farmers in 1930, the following figures compiled from the cooperative crop reports of the State Department of Agriculture for 1929 and 1930 show the prices of the principal crops grown in irrigation districts in that year in percentages of prices received for the same crops in 1929:

	<i>1930 price in per cent of 1929 price</i>
FIELD CROPS—	
Corn	78
Wheat	70
Barley	69
Rice	79
Cotton	59
Hay	61
Potatoes	75
TRUCK—	
Cantaloupes	81
Watermelons	70
Lettuce	90
Onions	79
Tomatoes (canning)	95
Tomatoes (table)	87
Peas (table)	87
FRUITS—	
Apples	61
Pears	33
Peaches (canning)	30
Apricots	62
Prunes	35
Plums	38
Cherries	78
Raisins	97
Raisin grapes (fresh)	58
Table grapes	64
Wine grapes	55
Oranges	60
Lemons	81
Figs (fresh)	90
Figs (dried)	53
Olives	93
Almonds	50
Walnuts	100

There was a decided recession in prices to the grower of live stock, and the returns from dairy products and poultry left no margin of profit to the producer.

Irrigation District Finances.

The principal revenues for the operation and repayment of capital costs of irrigation districts are derived from the products of the land. Anything that adversely affects the prosperity of the farmers is necessarily reflected in the collection of such revenues. While there were a total of fourteen districts in default prior to 1930, and most of these probably would not have been able to collect sufficient revenues to meet their costs in any case, there were additional defaults in 1930 which can be attributed primarily to the falling off of returns from farm operations for that year. It is estimated that in general the returns from the land did not exceed 75 per cent of those of 1929, yet of the total 1930 bond obligations of all districts not theretofore in default, 93 per cent were paid.

Under date of December 1, 1930, the findings of the Irrigation and Reclamation Financing and Refinancing Commission, appointed under the act of May 27, 1929, were reported to the Governor. The commission found that the California irrigation district law was fundamentally sound, and that in general the districts operating under it were well managed; that general depressed agricultural conditions together with an extended period of subnormal rainfall were primarily responsible for the impairment of the earning power of district lands, and that defaults could be traced to these factors, combined in some cases with over-capitalization and short amortization periods. Certain amendments to

the irrigation district act were recommended. Most of these amendments were passed by the 1930-1931 Legislature, but a recommendation that funds be appropriated by the State for the relief of districts failed to win the approval of the legislators.

Efforts were continued to enlist Federal aid for refinancing irrigation districts, and in the furtherance of this end, as well as that of securing State aid, too much emphasis apparently was placed on the present and possible future insolvency of California irrigation districts, which together with general financial uncertainty has resulted in the holders of district bonds becoming unduly alarmed and these securities reaching a low mark, for which there is no justification. Certain districts, intrinsically solvent, should have an extension of credit and/or a reduction in interest rates. The districts that are actually badly involved will require an adjustment of the debt to the ability of the land to pay, but any prediction that California irrigation districts are on the verge of a general collapse has no basis in fact.

Irrigation District Legislation.

Some 37 amendments to irrigation district laws were passed by the 1930-1931 Legislature. The changes affecting the California irrigation district act were largely in the procedure for the issuance and redemption of bonds, and relating to the collection of assessments and sale and redemption of delinquent lands. The most important of these changes are as follows:

Bonds.—Any bond issue may be made to mature serially or at one time, and the maximum period for maturity is increased to 50 years; bonds are subject to call on any interest payment date prior to their fixed maturity. Revenues for bond payments may be based in whole or in part on proceeds derived from contracts for the sale of water and/or electricity or from any other sources than assessments, and such revenues when so allocated can not be used for any other purpose. Districts may purchase with surplus funds any bonds not yet due, without advertising for bids. Provision is made for the exchange of district bonds for canals, irrigation works or other property.

California District Securities Commission.—The Bond Commission Act of 1913 is repealed and a commission created, consisting of the Attorney General, Superintendent of Banks, State Engineer and two experienced irrigationists appointed by the Governor. The securities act provides for procedures for bond issues and for the certification of bonds similar to those of the bond commission act. Some additional authority is given in requiring annual reports from districts. However, the greatest additional authority vested in the commission is that it shall act as the State agency, under the jurisdiction of the superior courts, for the investigation and settlement of the financial affairs of insolvent irrigation districts.

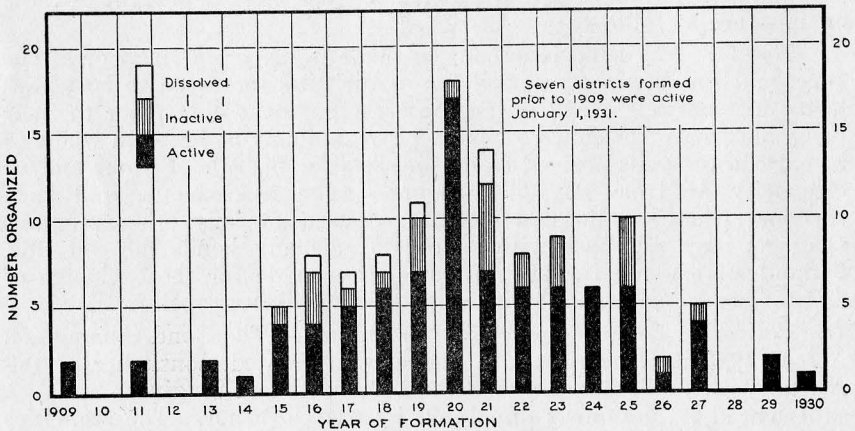
Assessments.—Some minor changes are made in the procedure for assessment. Districts are permitted to collect a stand-by charge whether water is used or not. Assessments for depreciation are authorized. Four funds are created to which the moneys properly belonging shall be apportioned, viz: bond principal fund, bond interest fund, construction fund, general fund. Authority is given the directors to accept a partial redemption of land sold for assessments.

Irrigation Districts Association.

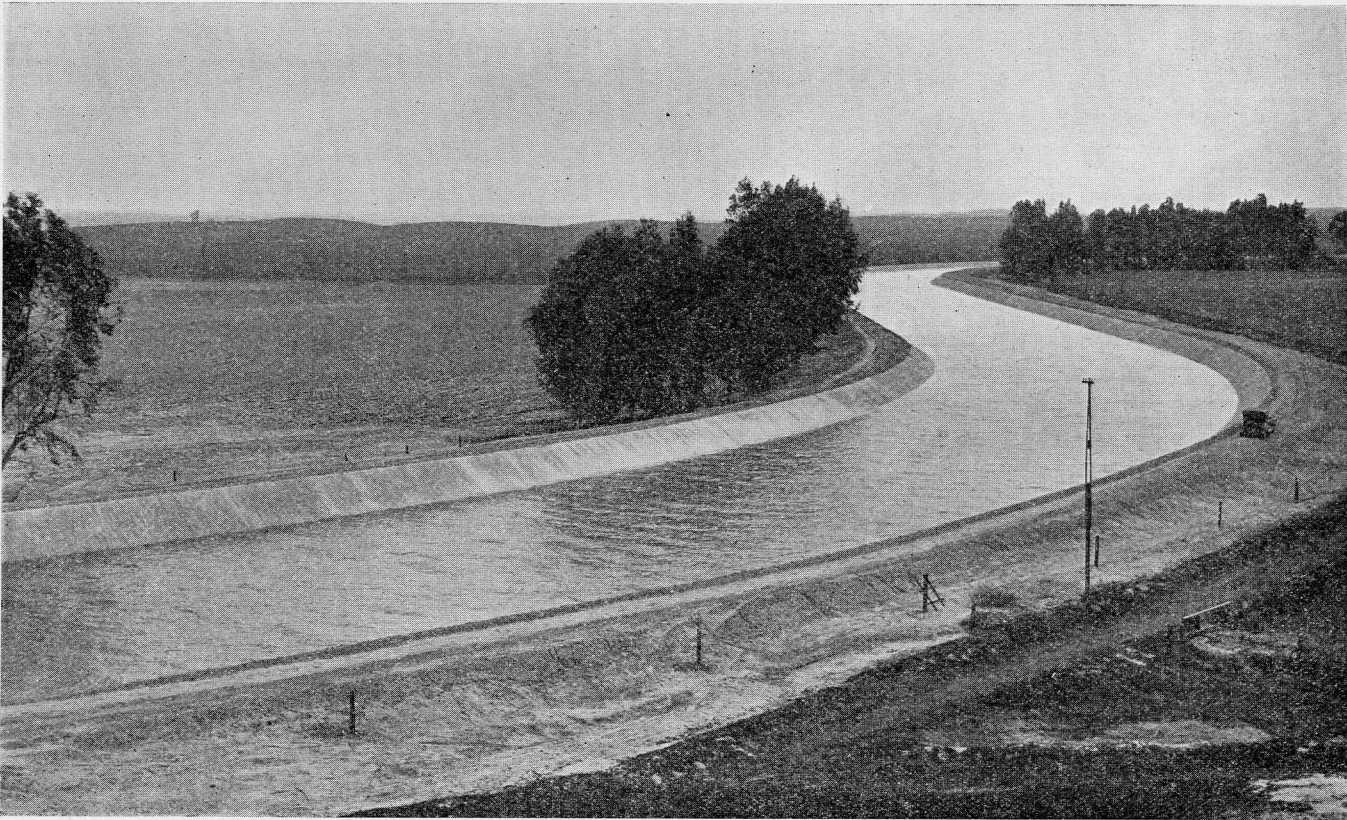
The 1930 spring meeting of the association was held in San Diego, April 17th to 19th. There were discussions on various matters of interest to irrigationists, including methods of distributing water in times of shortage, concrete lining of canals, district accounting, administration of land deeded to districts for delinquent assessments, and Federal assistance to the Palo Verde district.

The fall meeting was held in Stockton, November 21st and 22d. Practically all of this session was taken up with a discussion of irrigation district financing, Federal and State aid for districts, and suggested new State legislation affecting irrigation interests.

PLATE II



Rate of organization of irrigation districts in California, 1909-1931



Concrete lined main canal, Turlock Irrigation District

DIRECTORY OF CALIFORNIA IRRIGATION DISTRICTS

Name of district	County	Estimated population			District officials			Office address
		Inside cities and towns	Outside cities and towns	Total	President	Secretary	Manager or Engineer	
Alpaugh	Tulare		150	150	H. R. Leek	A. B. Allen	A. B. Allen	Alpaugh
Alfa	Tulare, Fresno, Kings	7,000	7,500	14,500	Walter Billingslea	E. Sibley	E. Sibley	Dinuba
Anderson-Cottonwood	Shasta, Tehama	1,200	1,200	2,400	Lewis Arnett	Carl F. Eaton	Clyde Smith	Anderson
Banta-Carbona	San Joaquin		750	750	F. D. Ryner	Elvira Hondaa	J. B. Knight	Tracy
Bard	Imperial		1,000	1,000	S. M. Colby	W. C. Ross		Ross Corner, Yuma, Arizona
Baxter Creek	Lassen		225	225	C. M. Stewart	J. A. Pardee		Susanaville
Beaumont	Riverside	1,800	500	2,300	E. D. Norcross	E. D. Stahl	A. F. McGee	Beaumont
Big Springs	Siskiyou		150	150	K. Gemmet	Roy E. Swigart		Montague
Browns Valley	Yuba		400	400	L. B. Gurney	F. E. Snell	L. B. Gurney	Browns Valley
Butte Valley	Siskiyou	250	750	1,000	H. L. Nelson	M. A. Gilmer	M. A. Gilmer	Macdoet
Byron-Bethany	Contra Costa, San Joaquin, Alameda	300	1,200	1,500	W. J. Livingston	G. A. Howard	V. L. Woolley	Byron
Camp Far West	Placer, Yuba		100	100	R. H. Durst	Robert Anderson		Wheatland
Carmichael	Sacramento		750	750	E. M. Lynch	Roy W. Sullivan	L. Williamson	P. O. Box 12, Carmichael
Carpenter	Orange	950	150	1,100	L. W. Evans	D. S. Smiley	A. Kempkey	R.R. 3, Box 249, Orange
Citrus Heights	Sacramento, Placer		700	700	J. A. Gray	Floyd J. Locher	J. H. Peugh	R.F.D. 1, Box 77, Roseville
Compton-Delevan	Colusa		75	75	W. H. Lovelace	C. E. Ryan		550 Montgomery St., San Francisco
Consolidated	Fresno, Tulare, Kings		24,000	24,000	W. H. Shafer	A. R. Stedman	I. H. Teilman	1728 Tueker Ave., Selma
Corcoran	Kings		1,500	1,500	J. M. Hansen	D. I. Drown	R. G. Wollett	Corcoran
Cordua	Yuba		40	40	W. Steel	Jeanette Frank		Marysville
Deer Creek	Tehama		65	65	Charles Dicus	Mabel Hall		Vina, % C. Dicus
East Contra Costa	Contra Costa	500	700	1,200	Robt. Wallace	Margaret Wallace	G. Jones	Brentwood
El Camino	Tehama		600	600	John Koth, Jr.	O. R. Smith	O. R. Smith	Gerber
El Dorado	El Dorado	3,000	3,000	6,000	W. A. Rantz	R. W. Browne	F. N. Hosking	Box 398, Placerville
El Nido	Merced		300	300	D. Pedrelli	A. L. Cowell	C. E. Graham	912 California Bldg., Stockton
Fairoaks	Sacramento		1,500	1,500	E. C. Phoenix	Guy L. Camden	E. E. Fulton	Fairoaks
Fallbrook	San Diego	100	800	900	Victor B. Westfall	C. C. Cook		Fallbrook
Foothill	Fresno and Tulare	500	700	1,200	H. J. MacKenzie	Geo. P. Pettengill	M. E. Enderlein	Orange Grove
Fresno	Fresno		50,000	50,000	A. B. Tarpey	J. Allan Hall	Geo. L. Swendsen	1001-9 Griffith-McKenzie Bldg., Fresno
Glenn-Colusa	Glenn, Colusa		1,500	1,500	S. S. Havenor	H. R. Allard	R. S. Edwards	Willows
Grenada	Siskiyou	108	132	240	W. E. Wanaka	Stuart Taylor		Box 53, Grenada
Hemet	Riverside		150	150	G. I. Webster	E. O. Eggen		Hemet
Hot Spring Valley	Modoc		150	150	S. B. Kelley	A. K. Wylie		Alturas
Imperial	Imperial	28,473	32,421	60,894	C. W. Brockman	F. H. Melver	M. J. Dowd	El Centro
Island No. 3	Kings		320	320	J. B. Roberts	Mrs. A. J. Scott		Rt. 1, Laton

Jacinto	Glenn		325
James	Fresno		175
La Canada	Los Angeles		1,000
Ladera	Riverside		300
Laguna	Fresno, Kings		3,000
Lakeland	Kings		10
Lakeside	San Diego	165	
La Mesa, Lemon Grove and Spring Valley	San Diego	4,500	3,500
Lemoore	Kings		1,500
Linden	San Joaquin	50	400
Lindsay-Strathmore	Tulare		4,500
Littlerock Creek	Los Angeles		200
Lucerne	Kings	700	1,200
Madera	Madera	6,000	5,000
Maxwell	Colusa		20
Merced	Merced	8,000	5,000
Modesto	Stanislaus	15,000	8,000
Mojave River	San Bernardino		100
Montague	Siskiyou	500	200
Naglee-Burk	San Joaquin		200
Nevada	Nevada, Placer		5,000
Newport Heights	Orange	400	1,100
Newport Mesa	Orange		300
Oakdale	Stanislaus, San Joaquin	3,600	2,900
Oroville-Wyandotte	Butte	400	600
Owens Valley	Inyo	1,500	500
Palmdale	Los Angeles	550	50
Palo Verde	Riverside, Imperial	1,000	2,500
Paradise	Butte	200	1,000
Potter Valley	Mendocino	100	450
Princeton-Codora-Glenn	Colusa, Glenn		1,000
Provident	Glenn, Colusa		150
Ramona	Ramona	850	850
Red Rock Creek	Lassen		300
Richvale	Butte	200	100
Riverdale	Fresno		1,000
San Diegouito	San Diego	1,200	1,000
Santa Fe	San Diego	560	240
San Ysidro	San Diego	1,500	1,500
Scott Valley	Siskiyou		120
Serrano	Orange		300
South Montebello	Los Angeles	850	850
South San Joaquin	San Joaquin	4,000	4,000

325	W. W. Koehler
175	Peter Ruseoni
1,000	Dan W. Green
300	O. S. Smith
3,000	L. L. Garner
10	Forrest Riley
165	O. F. Eimer
8,000	F. R. Beatty
1,500	W. S. Winger
450	Ralph G. Houston
4,500	Ernest L. Daniels
200	Vernon A. Carr
1,900	W. L. Haag
11,000	T. S. Coffee
20	C. E. Schoff
13,000	D. K. Barnell
23,000	J. B. Fiscalini
100	T. J. Thomas
700	G. W. Dwinnell
200	V. J. Reeve
5,000	J. A. Teagarden
1,500	Geo. A. Waterman
300	Chas. W. TeWinkle
6,500	H. B. McMath
1,000	Carleton Gray
2,000	B. E. Johnson
600	F. J. Ikler
3,500	Tony Sealey
1,200	A. W. Patton
550	J. E. March
1,000	V. D. Sharer
150	A. E. Moutrey
850	R. L. Jerman
300	John K. Enebae
1,000	J. E. Baker
1,000	L. F. Adams
2,200	Chas. H. Webster
800	Ira E. Conner
1,500	Pullan Foster
120	C. F. Bryan
300	Willard Smith
850	J. H. Dutcher
8,000	R. H. Groves

Rosco Caldwell
N. D. Ingham
E. C. Gates
E. C. Collatz
Bessie L. Scutt
H. S. Hurlbut
H. P. Schiller
Ruth C. Drew
H. E. Odale
A. L. Cowell
H. R. Huebert
W. J. Kling
S. P. Railsback
J. A. Secara
Thos. J. Hateley
H. P. Sargent
C. S. Abbott
J. S. Nation
Roy E. Swigert
George Wadsworth
Mrs. B. W. Baldwin
C. R. Van Duyn
D. J. Dodge
M. P. Kearney
W. J. Monro
Dell Yandall
Mrs. Dorris Hussy
W. G. Schollenberger
J. E. Alley
Fred L. Bosworth
W. G. Poage
L. M. Benoit
Mildred Wilson
Mrs. Grace Strong
Tina Z. Cushman
G. E. Thrailkill
W. O. Boettiger
L. Judd
H. G. Reynolds
F. H. Collins
Mrs. Sarah F. Becker
S. L. Steele

Rosco Caldwell
N. D. Ingham
W. N. Carpenter
R. F. Mock
Lars Anderson
H. P. Schiller
C. Harritt
Geo. W. Trauger
Harry Barnes
G. E. Mallon
A. A. Blakesley
F. J. Van Winkle
W. E. Fussing
Wm. Durbrow
R. E. Hartley
R. C. Tyler
W. R. McCarthy
H. P. Schoeller
C. P. Mahoney
J. E. Alley
S. P. Pitt
T. E. Balch
J. C. Bargar
Alvin Harry
C. W. Baker
W. C. Brown
W. O. Boettiger
G. P. Hart
A. Kempkey
W. S. Duncan
George K. Parker

Glenn
San Joaquin
Box 37, La Canada
Elsinore
Rt. 1, Box 197, Laton
Corcoran
Lakeside
P.O. Box 82, La Mesa
Lemoore
912 California Bldg., Stockton
Lindsay
Littlerock
Hanford
Madera
1710 10th St., Sacramento
Drawer L-1, Merced
Modesto
518 E. 10th St., Upland
Montague
Roberts Bldg., Tracy
Grass Valley
Costa Mesa
Box 350, Costa Mesa
Oakdale
Box 256, Oroville
Bishop
Palmdale
Blythe
Paradise
23-24 Hofman Bldg., Ukiah
Princeton
Willows
P.O. Box 34, Ramona
Susanville
Richvale
Riverdale
Encinitas
Rancho Santa Fe
San Ysidro
Fort Jones
R.F.D. 1, Box 168, Orange
1210 Spruce St., Pasadena
Manteca

REPORT ON IRRIGATION DISTRICTS

DIRECTORY OF CALIFORNIA IRRIGATION DISTRICTS—Continued

Name of district	County	Estimated population			District officials			Office address
		Inside cities and towns	Outside cities and towns	Total	President	Secretary	Manager or Engineer	
Stinson.....	Fresno.....		200	200	B. W. Kilby.....	R. M. Bostwick.....	W. F. Bryant.....	Pacific Southwest Bldg., Fresno
Table Mountain.....	Butte.....		40	40	R. W. Campbell.....	John Brereten, Jr.....	R. M. Gray.....	Feather Ave., Oroville
Terra Bella.....	Tulare.....	150	500	650	R. C. Gunnison.....	E. H. Robinson.....	I. H. Althouse.....	Terra Bella
Thermalito.....	Butte.....		1,200	1,200	M. Hodgson.....	Raymond A. Leonard.....	W. B. Taylor.....	Oroville
Tracy-Clover.....	San Joaquin.....		140	140	R. R. Mehring.....	George Wodsworth.....		Roberts Bldg., Tracy
Tranquillity.....	Fresno.....	150	300	450	J. A. Benkert.....	J. E. Tuttle.....	H. M. Crooker.....	Tranquillity
Tulare.....	Tulare.....	6,000	2,400	8,400	R. H. Beaver.....	Glenn L. Moran.....		P.O. Box 477, Tulare
Tule.....	Lassen.....	20	100	120	F. C. Farwell.....	J. A. Pardee.....		Susanville
Turlock.....	Stanislaus and Merced.....	6,000	14,000	20,000	D. C. Thornburg.....	Mrs. Anna Sorensen.....	R. V. Meikle.....	Turlock
Vandalia.....	Tulare.....		150	150	Walter D. Emory.....	H. C. Pegram.....	I. H. Althouse.....	Box 1026, Porterville
Vista.....	San Diego.....	800	1,519	2,319	Chas. M. Stokes.....	W. O. Bissinger.....	Chas. N. Bell.....	Vista
Walnut.....	Los Angeles.....		250	250	L. R. Paxton.....	Laure E. Paxton.....		R.F.D. Box 670, Rivera
Waterford.....	Stanislaus.....	300	600	900	Guy Laughlin.....	C. W. Quinley.....		Waterford
West Side.....	San Joaquin.....		1,340	1,340	Samuel A. Shearer.....	John C. Chrisman.....		Box 607, Tracy
West Stanislaus.....	Stanislaus, Merced.....	30	400	430	W. W. Cox.....	Elbridge Smith.....		Westley
Woodbridge.....	San Joaquin.....		200	200	W. J. Robinson, Jr.....	Olla L. Strother.....	Frank Davis.....	Woodbridge
Totals.....		109,806	213,757	323,563				
Buena Vista Water Storage.....	Kern.....	100	300	400	J. LeRoy Nickel, Jr.....	J. E. Wooley.....	M. N. Krag.....	Buttonwillow
Tulare Lake Basin Water Storage.....	Kings.....		25	25	Harry Lee Martin.....	Dan Hadsell.....	Ray May.....	Hanford
Totals.....		109,906	214,082	323,988				

CHAPTER II

DISTRICT ORGANIZATIONS

Irrigation Districts.

Since the passage of the Wright Act in 1887 there have been organized in California 166 irrigation districts, embracing within their boundaries approximately 6,104,000 acres, or an area of about 27% of the total agricultural lands of the State. Through proper legal procedure 49 of these districts, containing 2,104,000 acres, have been dissolved, and of the remaining 117, two are in the process of dissolution. Of the 117 districts now existing, 22 may be said to be inactive, in that they have not built irrigation works and no water is furnished to the included lands through the district organizations. Of the 49 districts dissolved 33 voted bonds in the total amount of \$13,839,000. Approximately \$6,000,000 of the bonds voted were never issued, and prior to dissolution settlements were effected which retired all outstanding bonds of the dissolved districts. Of the 117 districts now existing, 84 have voted bonds in the total amount of \$156,304,558, \$4,830,511 of which were refunding bonds. On January 1, 1931, the total of all irrigation district bond issues outstanding was \$96,503,091.

Irrigation Districts Organized in 1930.

In 1930, while there was more activity than for the previous year in promoting the formation of new districts, but two districts petitioned for organization, viz: Rio Seco and Richvale, both located in Butte County. The petitions for both of these districts were referred to the State Engineer, who reported favorably on the Richvale project, and, for the reason that the elements necessary for the successful operation of a district appeared to be lacking, unfavorably on the Rio Seco project.

RICHVALE IRRIGATION DISTRICT

Location: Townships 18 and 19 North, Ranges 1 and 2 East, M.D.B. and M., Butte County, about midway between Marysville and Chico.

Date of organization election: June 23, 1930.

Vote on organization: 73 for, 1 against.

Gross area: 17,170 acres.

Principal town: Richvale.

Post office: Richvale.

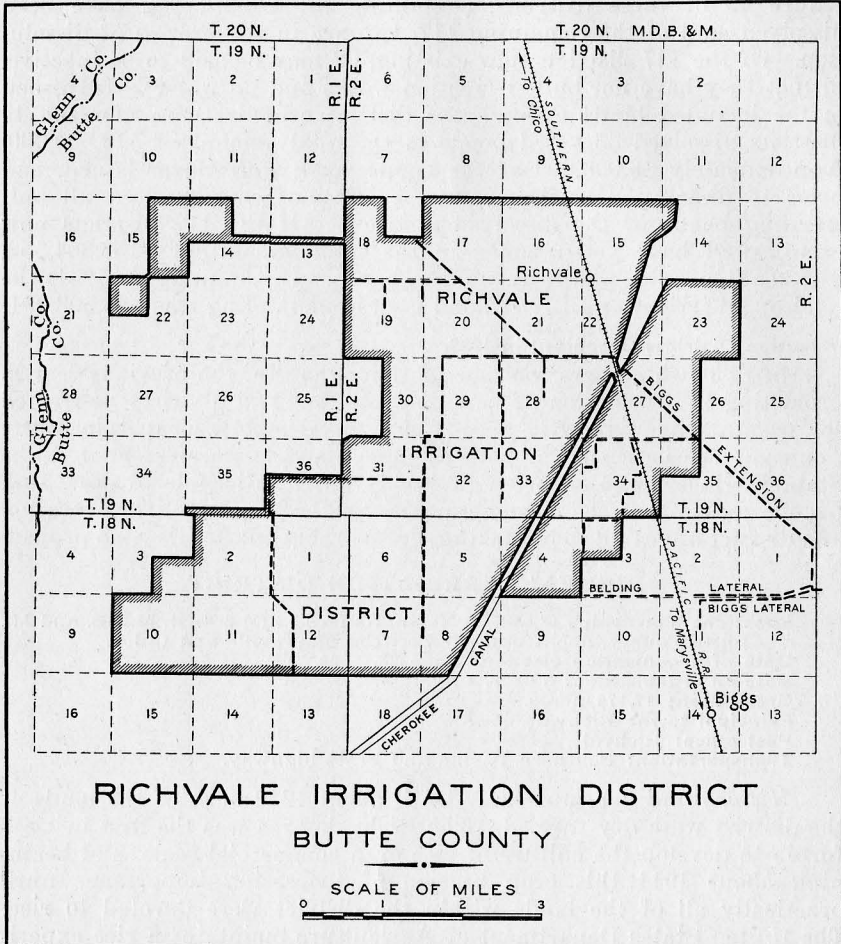
Transportation: Southern Pacific and State highway.

History and development.—Until about 1910 most of the lands of the district were dry farmed. The Richvale area was the first in California to develop the culture of rice on a commercial scale, and beginning about 1911 this crop became of increasing importance until practically all of the lands within the district were devoted to rice. The United States Department of Agriculture maintains a rice experiment station near Richvale, and through cooperation with this station the farmers in this district have stabilized rice growing and have developed one of the best rice-production sections in the State. Nearly all of the farmers in the district are members of the local rice growers' association, which is affiliated with the State association. A system of rotation prevails and an average of about 6500 acres are annually cropped to rice. The population of the district is estimated at 300.

There are 152 separate land holdings, seven of which contain ten acres or less. There are fifteen holdings of 300 acres or more. The total assessed valuation of the land at the time of the formation of the district was \$634,942, and of improvements \$98,450.

Soils, topography and drainage.—The soil in the greater portion of the area is classed as Stockton clay adobe, which has proven one of the best for rice culture. The lands of the district vary in elevation from 110 to 50 feet with a slope of three to five feet per mile to the southwest. The district has a complete and effective system of drainage.

PLATE IV



Water supply.—The district was irrigated by water furnished by the Sutter-Butte Canal Company, a public utility, which diverts from the Feather River. There had been progressive adjustments upwards in the rates of the utility company, and the district was organized for the purpose of reducing and stabilizing the cost of water for its lands by obtaining its own water supply.

Outstanding bonds.—The district had when organized total outstanding obligations for schools, drainage and reclamation amounting to approximately \$229,000, or an average of \$13 per acre. There are 16,202 acres included in drainage and reclamation projects on which the outstanding district obligations average \$12.60 per acre. The district voted a bond issue of \$515,000 with which to purchase a water supply and canal system.

Works.—Under an agreement with the Sutter-Butte Canal Company, dated November 3, 1930, the district purchased for a consideration of \$500,000 a one-sixth interest in all the company's water rights in the Feather River, except those granted under pumping permit No. 688, a one-sixth interest in the diversion works on Feather River and in three miles of main canal; one-third interest in Biggs Extension to the head of Belding Lateral; also a two-thirds interest in all of Biggs Extension beyond the head of Belding Lateral, together with a two-thirds interest in all laterals leading from Biggs Extension that are necessary to the service of lands outside the boundaries of the district; and also all other laterals, pumps and property necessary to the service of the district. The property acquired involved altogether 47 miles of laterals, four miles of main canal and 555 structures.

Districts Organized for Irrigation or Water Conservation Other Than Irrigation Districts.

The California water storage district act authorizes the organization of districts whose primary purpose is to provide storage for irrigation. There are two districts with a total area of 230,000 acres organized under this law.

There are some 25 districts operating under the county water district act or similar acts, for the purpose of supplying domestic and irrigation water. These districts are organized under the authority of county boards of supervisors, and their operations are not generally subject to the review of any State agency. The only district of this character organized in 1930 is the Santa Clara Valley Water Conservation District. This district was formed under the Water Conservation Act of 1929 and embraces 133,000 acres in Santa Clara County.

PLATE V



Central portion of La Canada Irrigation District

CHAPTER III

STATISTICAL INFORMATION

Following this chapter is a group of seven tables summarizing information as of January 1, 1931, pertaining to all active California irrigation districts. A brief discussion of the contents of these tables and a summary of financial activities of districts in 1930 follows:

Sources of Supply, Storage and Distribution of Water.

In Table I are shown the sources of water supply of the districts, capacities of reservoirs, water stored for the season of 1930, water diverted by gravity and by pumps and the distribution of water diverted. There are 17 major reservoirs with capacities ranging from 2000 to 286,000 acre-feet, with a total capacity of all reservoirs of 1,210,000 acre-feet. Water stored amounted to 695,000 acre-feet or a little more than 57% of the total capacity of the reservoirs. Diversions reported are 6,109,237 acre-feet by gravity, and 644,205 acre-feet pumped from streams and 339,841 from wells. Of the total of 7,093,283 acre-feet diverted, 5,301,903 acre-feet, or 74.7%, were reported as distributed for irrigation and domestic use.

Cost per Acre Irrigated.

Table II is a summary of the 74 districts reporting on the amount of water diverted in 1930, showing the total diversions, the average per acre irrigated, and the estimated cost based on the assessments on lands of usual valuation and water tolls applied to the average amount of water diverted per acre irrigated. The amount of water diverted by the districts ranges from a minimum of 0.11 to 14.77 acre-feet per acre irrigated. However, in most cases of districts located in the central part of the State, a figure of less than two acre-feet does not usually represent the quantity of water actually diverted per acre for crops, as in this section a great many private wells are used to supplement the supplies furnished by the districts, and the districts have no records of the quantity of water thus diverted. The cost per acre irrigated for the average amount of water diverted, as shown in the last column of the table, runs from a minimum of \$0.38 to a maximum of \$102.64.

An analysis of the data submitted indicates the following for irrigation districts reporting a full water supply:

Location of districts	Number of district	Acres irrigated	Water diverted		Average cost per acre irrigated
			Total acre-feet	Acre-feet per acre	
Northern and Central California.....	39	633,855	2,824,870	4.46	\$5 91
Southern California, except Colorado River.....	12	16,814	22,765	1.35	30 70
Colorado River.....	3	470,635	3,463,455	7.36	5 16

Areas and Crops.

Table III is a summary of the gross, irrigable and irrigated areas of the 86 districts which returned a crop report for 1930. The table also shows the number of individual holdings in each district and the

area held under tax deeds by the districts on January 1, 1931. The 86 districts contain 3,470,236 acres, of which 2,919,593 are irrigable. The total number of holdings is 86,219, of which it is estimated approximately 52,000 are farm holdings with a population of 214,000. The districts have taken tax deeds to 72,431 acres or about 2.1 per cent of the total area. Of the irrigable land 2,168,713 acres were cropped, and of the cropped land 1,789,887 acres were irrigated. Seventy-four per cent of the irrigable area was cropped and 61 per cent was irrigated. There was an increase of 34,287 acres over that reported irrigated in 1929. The following is a summary of all irrigated crops reported:

<i>Kind of crop</i>	<i>Acres</i>	<i>Per cent of whole</i>
Alfalfa -----	450,426	25.2
Grain and grain hay -----	273,779	15.3
Field and truck -----	254,686	14.2
Cotton -----	90,705	5.1
Rice -----	41,051	2.3
Vines -----	239,500	13.4
Deciduous fruits, nuts and olives -----	139,485	7.8
Citrus -----	41,025	2.3
Avocados -----	4,554	0.2
Not segregated -----	254,676	14.2
	1,789,887	100.0

Assessments, Water Tolls and Other Revenues.

Table IV sets up the principal sources and amounts of the income of California irrigation districts in 1930. The table indicates that the total assessment levies of all districts for the calendar year 1930, computed as one-half of the sum of the levies for 1929-1930 and 1930-1931, was \$10,459,088. Add to this the amount of water tolls and other revenues collected in 1930 amounting to \$4,687,789, and the result is a grand total of estimated revenues for the year of \$15,146,877. It is estimated that the total earned revenues collected in 1930 amounted to approximately \$12,760,000, the uncollected balance being mostly delinquent assessments. Columns 1, 2 and 3 of the table gives the amount of unredeemed tax certificates as of January 1, 1931, for the assessment years 1927-1928 to 1929-1930, and a subsequent column gives the total number of tax certificates sold at the date of sale in 1930. The average delinquency on the 1929-1930 assessment at the date of the 1930 tax sale was 20.5 per cent. For 1928-1929 the delinquency was 15.7 per cent, and for 1927-1928, 18.7 per cent.

Bonds and Warrants.

Table V sets forth the status as of January 1, 1931, of all bonds of districts operating under the California Irrigation District Act, showing the amount voted, canceled, sold, paid and outstanding on that date, as well as the amount of bond principal and interest in default. In addition, the last column of the table shows the amount of interest-bearing warrants outstanding. A comparison of this column with like data for 1929 indicates that the districts in 1930 increased their warrant indebtedness over the previous year in the total amount of \$509,420.

El Nido, Merced County, was the only irrigation district which voted bonds in 1930. The amount of bonds voted by this district was \$135,000, which together with \$7,000 of El Camino bonds were the only

issues validated by the California Bond Certification Commission in 1930. The following bond sales were authorized by the commission :

<i>District</i>	<i>Authorized sale</i>	<i>Sold</i>
	<i>1930</i>	<i>1930</i>
Banta-Carbona -----	\$6,000	\$6,000
El Dorado -----	350,000	88,000
Nevada -----		91,000
Oroville-Wyandotte -----	36,000	36,000
West Stanislaus -----	50,000	100,000
	<u>\$442,000</u>	<u>\$321,000</u>

Following is a summary of bond information as of January 1, 1931, on existing California irrigation districts :

Total issues voted -----		\$156,304,558
<i>Disposition of bonds.</i>		
Original issues :		
Sold -----	\$106,071,221	
Unsold -----	43,866,476	
Canceled -----	1,536,350	
		\$151,474,047
Refunding issues :		
Sold or exchanged -----	\$4,429,511	
Unsold -----	303,000	
Canceled -----	98,000	
		\$4,830,511
<i>Present status of bonds.</i>		
Original issues :		
Paid -----	\$8,083,500	
Refunded -----	4,428,511	
Outstanding -----	93,559,210	
Refunding issues :		
Paid -----	1,485,630	
Outstanding -----	2,943,881	
Paid, all issues -----		\$9,569,130
Outstanding, all issues -----		\$96,503,091
Principal in default -----		\$710,700
Interest in default -----		\$1,827,217
<i>Disposition of 1930 bond obligations.</i>		
Principal paid -----	\$1,361,098	
Interest coupons paid -----	4,785,369	
		\$6,146,467
Refunded -----		\$64,000
Defaulted : Principal -----	\$233,700	
Interest -----	694,459	
		\$928,159
Percentage of 1930 bond and bond interest payments defaulted, 13%.		

Annual Bond Obligations.

Table VI is a set-up of the annual bond obligations of each California irrigation district as of January 1, 1931, to December 31, 1950. In the last column is shown the total face value of bonds maturing serially after 1950. Plate VI appearing on page 24 indicates graphically the combined bond obligations of all irrigation districts, showing the trend and peak of bond payments, interest payments, and combined bond and interest payments from January 1, 1931, to the maturity of the last bond and interest coupon outstanding on that date.

Bond Obligations per Acre.

Table VII shows the average bond obligation per acre for each district and the average for all districts having outstanding bonds. These figures are a general average only, and they are not therefore necessarily a measure of the bond principal and interest payments required of any particular acre of land, as this requirement varies with the assessed valuation, which in most districts is not the same for all of the included lands.

Expenditures Approved from Bonds.

The California Irrigation District Act and the Bond Certification Commission Act provide for the approval by the Bond Commission of all district expenditures proposed from funds derived from the sale of bonds. Such proposed expenditures, as represented by approvals of the Bond Commission in 1930, were as follows:

Banta-Carbona	\$5,760 00
Buena Vista Water Storage	942,731 11
El Camino	7,000 00
El Dorado	376,175 00
Oroville-Wyandotte	25,185 24
Paradise	2,853 94
Thermalito	2,501 54
Vista	59,308 69
West Stanislaus	40,000 00
Woodbridge	4,223 09
Total	\$1,465,738 61

PLATE VI

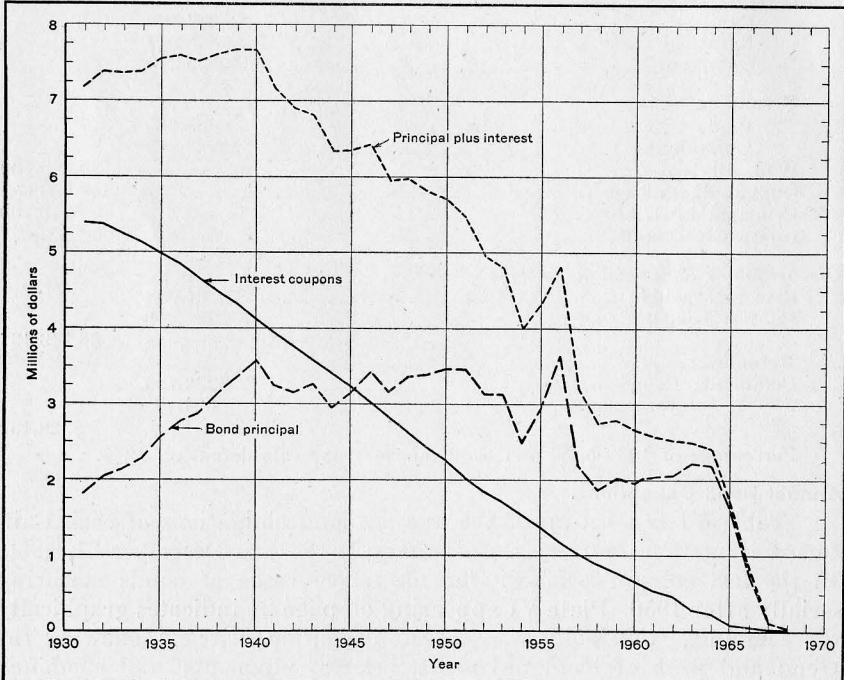
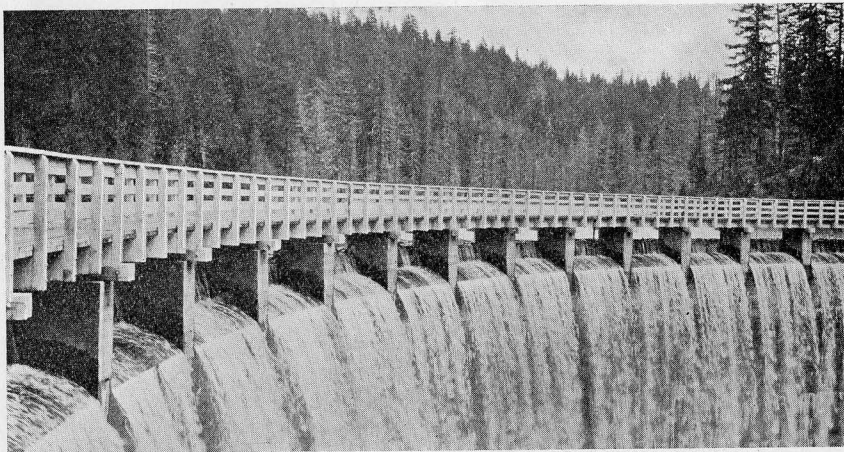


Diagram showing trend of maturities of outstanding bonds of California irrigation districts as of January 1, 1931

Additional Information.

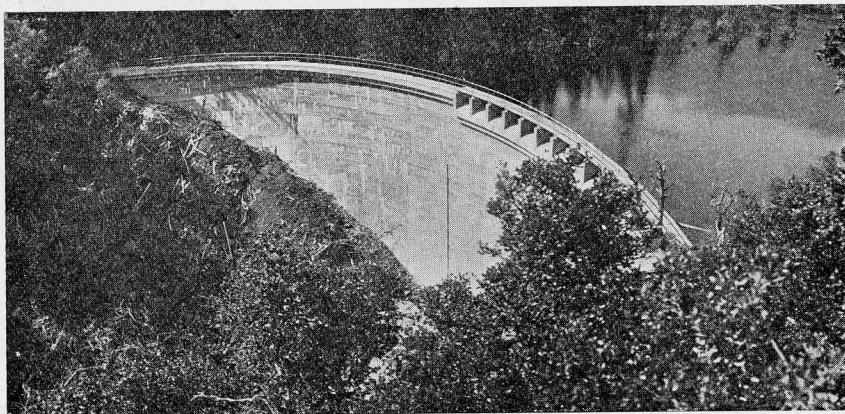
Additional information of value to those interested in irrigation and reclamation districts is available in Bulletins No. 36 and No. 37, published by the Department of Public Works, Division of Water Resources. Bulletin No. 36, "Cost of Irrigation Water in California," contains information on the cost of water under typical irrigation enterprises, including irrigation districts, mutual water companies, public utilities and individual farm plants. Bulletin No. 37 contains financial and general data pertaining to irrigation, reclamation and other public districts in California.

PLATE VII



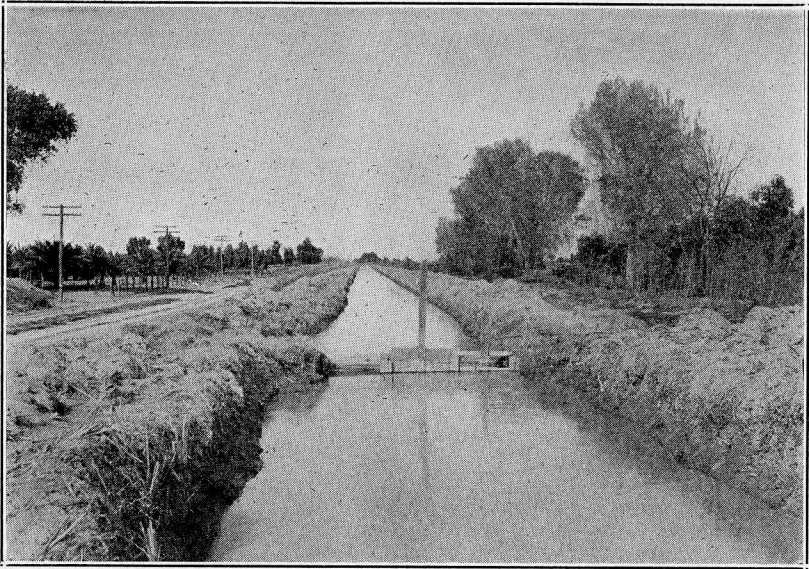
A section on crest of Lost Creek Dam, Oroville-Wyandotte Irrigation District

PLATE VIII



Concow Dam, Table Mountain and Thermalito Irrigation Districts

PLATE IX



Typical branch canal, Imperial Irrigation District

TABLES OF STATISTICAL DATA

TABLE OF CONTENTS

TABLE I

DATA RELATING TO SOURCE OF SUPPLY, STORAGE AND DISTRIBUTION OF WATER FOR CALIFORNIA IRRIGATION DISTRICTS

Name of district	Source of water supply	Reservoirs		Acre-feet diverted, 1930			Average pump lift, feet	Distribution of water in acre-feet			
		Capacity, acre-feet	Stored for season, acre-feet	By gravity	By pumps	Total		Inside district			Outside district
								Irrigation	Domestic	Total	
Alpaugh	Wells				23,190	23,190	75	10,280	250	10,530	12,660
Alta	Kings River			86,500		86,500		86,500		86,500	
Anderson-Cottonwood	Sacramento River			124,071		124,071		124,071		124,071	
Baata-Carbona	San Joaquin River				45,109	45,109	34	25,787		25,787	4,020
Bard	Colorado River			30,347		30,347		30,347		30,347	
Baxter Creek	Eagle Lake										
Beaumont	Creeks and wells			277	1,569	1,846	140	1,667	179	1,846	
Big Springs	Big Springs				8,400	8,400	66	8,400		8,400	
Browns Valley	North Fork Yuba River			22,585		22,585		22,585		22,585	
Butte Valley	Butte and Antelope creeks and wells	60,000	3,000		2,500	2,500	42	2,500		2,500	
Bon-Bethany	Old River (San Joaquin River)				16,561	16,561	44	8,347		8,347	
Camp Far West	Bear River			5,000		5,000		5,000		5,000	
Carmichael	American River				3,528	3,528	±100	3,528		3,528	
Carpenter	Santiago Creek and wells	5,000									
Citrus Heights	North Fork Ditch Company			3,729		3,729		3,729		3,729	
Compton-Delevan	Sacramento River					(1)	±9	17,394		17,394	
Consolidated	Kings River			136,000		136,000		59,000		59,000	3,000
Corcoran	Kings River, Peoples Ditch and wells			15,218	14,881	30,099	64	30,099		30,099	
Cordia	Yuba River			24,250		24,250		24,250		24,250	
Deer Creek	Deer Creek										
East Contra Costa	Old River (San Joaquin)				28,861	28,861	15	21,407		21,407	
El Camino	Wells				8,171	8,171	65	8,171		8,171	
El Dorado	South Fork American River and Webber Creek	2,000	1,200	12,000		12,000		8,000	4,000	12,000	
El Nido	Merced Irrigation District and wells										
Fairoaks	North Fork Ditch Company			5,511		5,511		4,521	990	5,511	
Fresno	Kings River and wells			340,225	10,128	350,353		280,000		280,000	300
Glenn-Colusa	Sacramento River				322,550	322,550	±9	282,245		282,245	40,305
Grenada	Shasta River				5,863	5,863	138	5,863		5,863	
Hot Spring Valley	Pit River and Sage Reservoir	77,000	7,000	6,500		6,500		6,000		6,000	
Imperial	Colorado River			3,280,708		3,280,708		1,679,433		1,679,433	484,919
Island No. 3	Kings River										
Jacinto	Sacramento River					(1)	±9	13,294		13,294	125
James	Kings, San Joaquin rivers and 81 wells				28,057	28,057	43	27,210		27,210	847
La Canada	Canyons and wells	10		105	272	377	1,125		377	377	
Laguna	Kings River			26,586		26,586		26,586		26,586	
Lakeland	Kings and Tule rivers										
Lakeside	San Diego River and wells				65	65	10 to 40			32	33
La Mesa, Lemon Grove and Spring Valley	San Diego River, Boulder Creek and wells	18,000	895	5,153	2,514	7,667	300	2,000	1,273	3,273	461
Lindsay-Strathmore	Wachumne River and wells			3,350	13,210	16,560	287	15,774	187	15,961	
Little Rock Creek	Little Rock Creek	2,600	2,000	3,000		3,000		3,000		3,000	
Maxwell	Sacramento River and Reclamation Drain No. 2047					31,605	20	31,605		31,605	
Merced	Merced River (McClure Lake) and wells	286,000		411,890	90,000	501,890	40	376,418		376,418	
Modesto	Tuolumne River (Don Pedro Dam) and wells	119,466	119,466	315,265	39,671	354,936	30	354,936		354,936	
Montague	Shasta River	70,000	12,000	12,000		12,000		12,000		12,000	
Nagle-Burk	Old River (San Joaquin)				6,616	6,616	10	6,616		6,616	
Nevada	Yuba River	80,000	78,060	67,175		67,175		11,153	529	11,682	3,442
Newport Heights	Three wells	2			603	603	84		603	603	
Newport Mesa	Wells	5			476	476	120		476	476	
Oakdale	Stanislaus River	112,500	112,500	151,650	17	151,667		93,500		93,500	1,360
Oroville-Wyandotte	Feather River	6,300	6,300	24,300		24,300		3,600		3,600	3,500
Palmdale	Little Rock Creek and wells	10,000	2,250	3,325	400	3,725	220	1,454	365	1,819	
Palo Verde	Colorado River			152,400		152,400		152,400		152,400	
Paradise	Little Butte Creek and storage	3,012	3,012	4,335		4,335		4,335		4,335	
Potter Valley	Eel River			2,866		2,866		2,866		2,866	
Princeton-Codora-Glenn	Sacramento River				34,996	34,996	22½	35,442		35,442	
Provident	Sacramento River				86,955	86,955	22½	95,583		95,583	
Ramona	Wells				61	61	25 to 165		61	61	
Riverdale	Kings River			5,552		5,552		5,552		5,552	
San Dieguito	Lake Hodges and Lake Henshaw			2,070		2,070		1,738	186	1,924	
Santa Fe	Lake Hodges and Lake Henshaw	40,000	30,000	1,516	1,044	2,560	50 to 150	2,105	142	2,247	
San Ysidro	Wells	2			280	280			280	280	
Scott Valley	Scott River			21,780		21,780		15,246		15,246	
South Montebello	Wells				1,102	1,102	175		1,102	1,102	
South San Joaquin	Stanislaus River	87,000	87,000	218,704		218,704		176,000		176,000	



DATA RELATING TO SOURCE OF SUPPLY, STORAGE AND DISTRIBUTION OF WATER FOR CALIFORNIA IRRIGATION DISTRICTS

Name of district	Source of water supply	Reservoirs		Acre-feet diverted, 1930			Average pump lift, feet	Distribution of water in acre-feet			
		Capacity, acre-feet	Stored for season, acre-feet	By gravity	By pumps	Total		Inside district			Outside district
								Irrigation	Domestic	Total	
Stinson	Kings River and wells				14,821	14,821	56	14,821		14,821	
Table Mountain	Feather River	4,510	4,510	4,100		4,100		4,100		4,100	
Terra Bella	Wells				6,630	6,630	500	6,450	180	6,630	
Thermalito	Feather River	3,690	3,690	7,075		7,075		6,277	798	7,075	
Tracy-Clover	Old River (San Joaquin)				1,507	1,507	38	1,507		1,507	
Tranquillity	Old River (San Joaquin)				10,000	10,000	33	10,000		10,000	
Tulare				3,000		3,000		3,000		3,000	
Turlock	Tuolumne River and wells	223,000	223,000	470,025	78,163	548,188	40	321,168		321,168	
Vandalia	Tule River and wells				2,169	2,169	300	2,169		2,169	
Vista	Lake Henshaw			5,878		5,878		5,145		5,145	
Walnut	San Gabriel River			463	1,163	1,626	58	1,163		1,163	
Waterford	Tuolumne River			25,507		25,507		22,000		22,000	
Westside	San Joaquin River				13,721	13,721	83	13,721		13,721	
West Stanislaus	San Joaquin River				26,617	26,617	100	24,499		24,499	2,118
Woodbridge	Mokelumne River			67,246		67,246		51,400		51,400	15,846
Totals		1,210,097	695,883	6,109,237	984,046	7,093,283		4,716,957	12,010	4,728,967	572,936
Buena Vista Water Storage	Kern River	209,000	8,500	52,431		52,431		52,431		52,431	

¹ All water received from Glenn-Colusa district.

² Portion of water received from Glenn-Colusa district.

³ Glenn-Colusa pumped all water for (¹) and portion only for (²).

⁴ Water diverted 1929 records.



TABLE II
DATA RELATING TO THE AVERAGE COST PER ACRE IRRIGATED FROM WATER DIVERTED BY CALIFORNIA IRRIGATION DISTRICTS IN 1930

Name of district	Assessed valuation per acre for 1931			Bonds outstanding per irrigable acre	Average assessment in 1930 per acre of land of usual valuation				Water				
	High	Low	Usual		General, including operation and maintenance	Construction or improvements	Bond funds		Diverted by district in 1930		Average toll per acre-foot diverted	Estimated cost per acre irrigated for average amount of water diverted	
							Principal	Interest	Acre-feet total	Acre-feet per acre irrigated		Including all assessments	Excluding construction improvements and bond principal
Alpough.....	\$60 00	\$40 00	\$50 00	\$31 32	\$1 00		\$1 41	\$2 59	23,190	2.37	\$1 68	\$8 98	\$7 57
Alta.....	60 00	3 00	60 00	2 04	0 90		0 29	0 17	86,500	0.96	1 42	2 43	2 72
Anderson-Cottonwood.....	75 00	20 00	50 00	40 98	1 00		0 75	2 50	124,071	8.85		4 25	3 50
Bantam-Carbona.....	150 00	50 00	150 00	75 02	3 51	\$0 79		3 98	45,109	1.91	1 84	11 79	11 00
Bard.....	100 00	100 00	100 00		4 03	0 98			30,347	5.10		5 01	4 03
Beaumont.....	100 00	100 00	100 00	80 35	2 50		2 90	4 10	1,846	0.92	15 28	23 57	20 67
Big Springs.....	200 00	1 00	200 00	24 75	1 32		1 22	1 37	8,400	3.43	1 11	7 71	6 49
Browns Valley.....									22,585	3.23	0 32	1 03	1 03
Butte Valley.....	40 00	5 00	40 00	33 94				6 50	2,500	1.25		6 50	6 50
Byron-Bethany.....	200 00	50 00	130 00	47 51	1 70		0 69	2 99	16,561	3.07	5 41	21 99	21 30
Camp Far West.....	150 00	5 00	93 75	67 34	0 06			2 26	5,000	2.04		2 32	2 32
Carmichael.....	80 00	80 00	80 00	31 80	3 25		1 66	2 09	3,528	1.80	4 56	15 21	13 55
Carpenter.....	1,000 00	1,000 00	1,000 00	151 52	1 25		3 75						
Citrus Heights.....	100 00	100 00	100 00	59 69	4 25		2 86	3 39	3,729	1.41	0 04	11 06	8 20
Compton-Delevan.....	75 00	10 00	75 00	33 39	0 68		2 40	2 40	17,394	7.12	1 03	10 41	10 41
Consolidated.....	110 00	1 00	70 69	1 61	0 49		0 88	0 15	136,000	1.05		1 52	0 64
Corcoran.....	100 00	80 00	100 00	14 71	0 78	0 78	0 20	0 88	30,099	0.86	0 95	3 46	2 48
Cordua.....	75 00	30 00	70 00	47 59			3 51	3 51	24,250	12.70	0 04	4 02	4 02
Deer Creek.....	100 00	5 00	100 00	12 03	0 70		1 76	0 84				3 30	1 54
East Contra Costa.....	190 00	70 00	180 00	62 55	1 94		0 63	2 02	28,861	2.07	2 97	10 74	10 11
El Camino.....			125 00	56 03	2 64			3 61	8,171	1.93		6 25	6 25
El Dorado.....	155 00	2 00	80 00	34 56			0 60	0 60	12,000	2.00	4 66	9 92	9 92
Fair Oaks.....	100 00	30 00	90 00	34 12	2 31	2 11	2 11	1 77	5,511	2.12	3 12	14 92	10 70
Fallbrook.....	160 00	80 00	93 00										
Foothill.....	80 00	20 00	60 00										
Fresno.....	100 00	5 00	100 00	1 07	0 90		1 45	0 15	350,353	1.94		2 50	1 05
Glenn-Colusa.....	44 00	25 00	40 00	13 03	0 58		1 04	0 89	282,663	4.72	0 40	4 40	3 36
Grenada.....	200 00	5 00	200 00	68 38	12 54		2 09	5 863		3.70		14 63	14 63
Imperial.....	150 00	100 00	125 00	28 45	2 44	0 25	0 73	2 20	3,280,708	6.36	0 03	5 81	4 83
Island No. 3.....	80 00	25 00	50 00										
Jacinto.....			60 00	14 61	0 93		0 94	0 98	13,419	3.31	0 25	3 67	2 73
James.....	150 00	25 00	150 00	54 47	0 77		2 25	2 20	28,057	2.25	2 38	10 57	8 32
La Canada.....	1,500 00	1,000 00	1,000 00	264 73	3 00			14 50	377	0.47	60 89	46 12	46 12
Ladera.....	400 00	200 00	400 00		3 30								
Laguna.....	100 00	50 00	100 00	1 77	0 60		0 93	0 17	26,586	1.06		1 70	0 77
Lakeside.....	100 00	100 00	100 00	121 53	2 44			1 81	65	1.30	50 72	70 19	70 19
La Mesa-Lemon Grove-Spring Valley.....	350 00	150 00	250 00	151 73	3 72		2 78	2 78	7,667	1.95	20 36	46 20	46 20
Lindsay-Strathmore.....	175 00	175 00	107 36	2 81		7 05	3 65	8 86	16,560	1.77	10 07	40 19	29 49
Little Rock Creek.....	100 00	100 00	100 00	125 13	7 97		0 16	1 62	3,000	1.50		9 75	9 59
Madera.....	100 00	15 00	50 00										
Maxwell.....									31,605				
Merced.....	200 00	5 00	125 00	94 64	0 45			6 99	501,890	4.01		7 44	7 44
Modesto.....	150 00	40 00	80 00	53 13	1 60		0 84	3 20	354,936	5.29		5 64	4 80
Montague.....	75 00	1 00	37 50	75 28	2 08			3 24	12,000	1.71		5 32	5 32
Naglee-Burk.....	100 00	60 00	100 00	65 35	5 21			4 79	6,616	2.31		10 00	10 00
Nevada.....	90 00	6 00	30 00	48 99	0 01			0 23	67,173	1.34	2 63	3 76	3 76
Newport Heights.....	1,120 00	650 00	960 00	106 45	7 20			6 72	603	0.96	12 87	26 28	26 28
Newport Mesa.....			600 00	125 00	7 80			4 20	476	1.19	1 34	13 59	13 59
Oakdale.....	140 00	10 00	60 00	51 72	1 26	0 36	0 90	1 54	151,667	7.25		4 06	2 80
Oroville-Wyandotte.....	100 00	10 00	100 00	49 10				2 50	24,300	5.67	1 12	6 35	6 35
Palmdale.....	100 00		100 00	94 72	1 26	1 76		6 62	3,725	3.74		9 64	7 88
Palo Verde.....	100 00	25 00	75 00	60 43	3 95		2 02	7 21	152,490	5.99		13 18	11 16
Paradise.....	90 00	2 00	55 00	48 90	1 25		0 24	3 06	4,335	1.35		4 55	4 31
Potter Valley.....	60 00	3 00	60 00	23 12	1 20			1 47	2,866	1.51	2 17	5 95	5 95
Princeton-Codora-Glenn.....	70 00	65 00	67 50	14 24	2 09			0 88	35,442	8.22	0 43	6 50	6 50
Provident.....	80 00	60 00	70 00	47 81	1 45		1 54	3 17	95,583	14.77	0 48	13 24	11 70
Ramona.....	200 00	50 00	90 00	153 20				4 55	61	1.00	78 15	82 70	82 70
Riverdale.....	75 00	60 00	70 00	3 38	0 18	0 60	0 53	0 20	5,552	0.79		1 51	0 88
San Dieguito.....	1,000 00	150 00	600 00	105 14	8 43	0 87	1 92	6 78	2,070	1.64	15 37	33 98	31 19

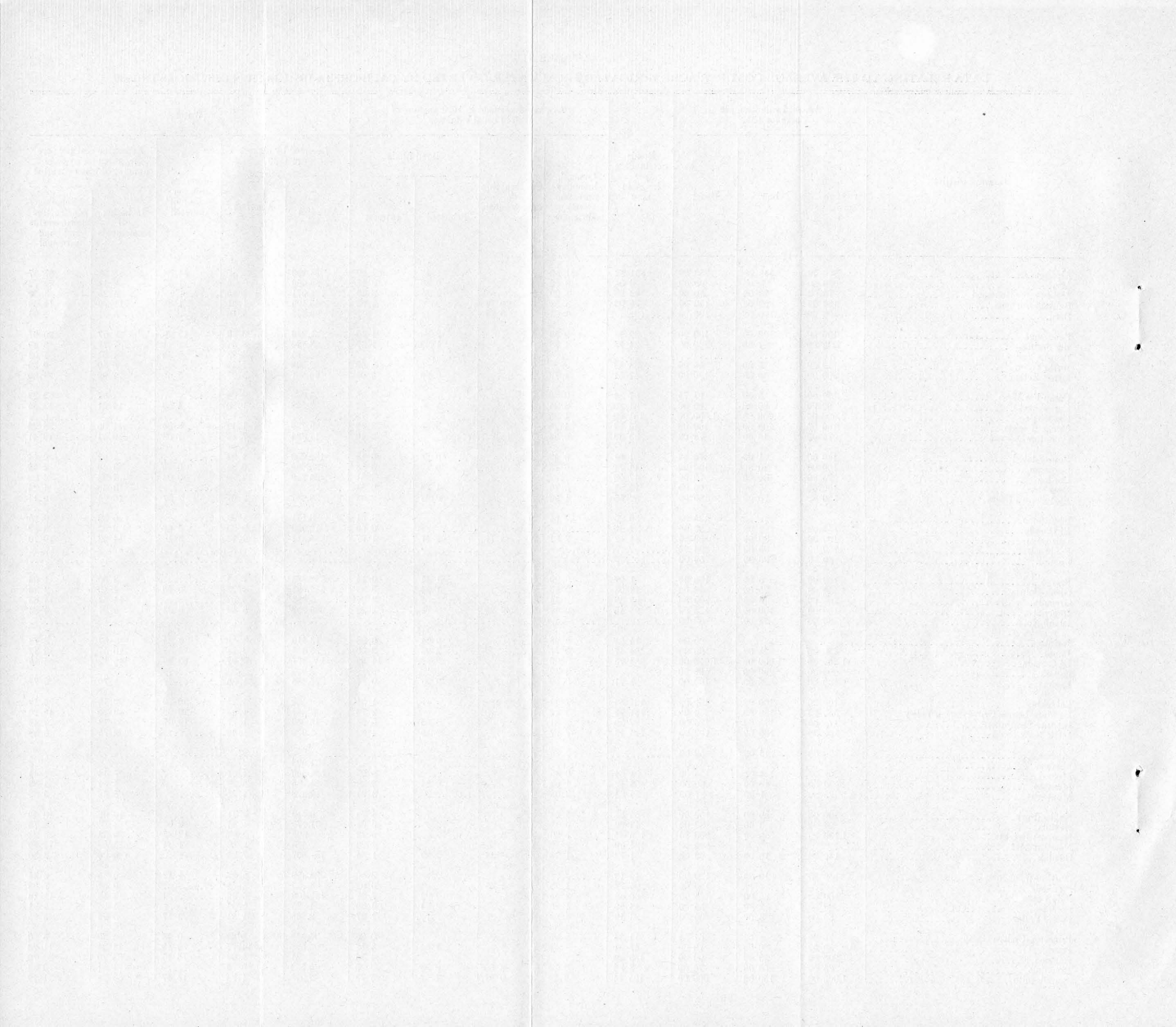


TABLE II—Continued

DATA RELATING TO THE AVERAGE COST PER ACRE IRRIGATED FROM WATER DIVERTED BY CALIFORNIA IRRIGATION DISTRICTS IN 1930

Name of district	Assessed valuation per acre for 1931			Bonds outstanding per irrigable acre	Average assessment in 1930 per acre of land of usual valuation			Diverted by district in 1930		Water			
	High	Low	Usual		General, including operation and maintenance	Construction or improvements	Bond funds		Acre-foot total	Acre-feet per acre irrigated	Average toll per acre-foot diverted	Estimated cost per acre irrigated for average amount of water diverted	
							Principal	Interest				Including all assessments	Excluding construction improvements and bond principal
Santa Fe.....	\$450 00	\$60 00	\$200 00	\$100 29	\$8 37		\$5 15	2,560	0.85	\$13 97	\$25 39	\$25 39	
San Ysidro.....	300 00	20 00	250 00	54 11	3 80		1 20	280	2.55	38 29	102 64	102 64	
Scott Valley.....			50 00	17 25	1 00	\$0 50	\$1 08	0 82	5.44		4 00	1 82	
Serrano.....	1,000 00	10 00	881 59	151 63	1 32		3 08	21,780					
South Montebello.....	850 00	850 00	850 00	105 80	0 77		4 09		1.33	9 37	29 46	25 37	
South San Joaquin.....	135 00	20 00	100 00	89 37	1 90	0 37	0 85	218,704	4.02		7 10	5 88	
Stinson.....	50 00	50 00	50 00	32 73	2 55		0 40	14,821	2.44	1 75	9 37	8 97	
Table Mountain.....	250 00	100 00	200 00	105 06	0 29		7 64	4,100	9.15	0 67	14 06	14 06	
Terra Bella.....	130 00	70 00	100 00	72 54	3 59		2 32	6,630	1.89	12 80	34 58	32 26	
Thermolito.....	150 00	120 00	150 00	108 84	4 07		7 11	7,075	3.54		11 18	11 18	
Tracy-Clover.....	100 00	100 00	100 00	49 49	5 53		3 47	1,507	1.79		9 00	9 00	
Tranquility.....	150 00		150 00	24 63	1 37		1 58	10,000	1.82	0 26	3 42	3 42	
Tulare.....	75 00	25 00	50 00		0 25			3,000	0.11	0 16	0 27	0 27	
Turlock.....	125 00	20 00	70 00	38 65	0 13		0 70	548,188	4.02		2 89	2 19	
Vandalia.....	200 00	200 00	200 00	149 62	2 66		5 80	2,169	1.90	8 72	35 55	29 75	
Vista.....	200 00	135 00	155 00	116 36	3 87		8 02	5,878	1.06	28 71	42 32	42 32	
Walnut.....	1,000 00	1,000 00	1,000 00		10 00			1,626	1.78	2 23	13 97	13 97	
Waterford.....	200 00	5 00	76 00	55 76	1 67		1 49	25,507	4.87		6 29	4 80	
Westside.....	100 00		100 00	44 75	1 75		1 28	13,721	1.16	2 81	9 01	7 73	
West Stanislaus.....	120 00	92 00	100 00	53 08	0 77		0 11	26,617	1.96	3 00	8 88	8 77	
Woodbridge.....	150 00	20 00	100 00	23 22			0 35	67,246	8.03	0 29	4 33	3 98	
Total.....								7,086,783					
Buena Vista Water Storage.....	\$28 90	\$3 67	\$28 50	\$18 70	\$1 28		\$2 00	52,431	4.51		\$3 28	\$3 28	
Total diverted.....								7,139,214					

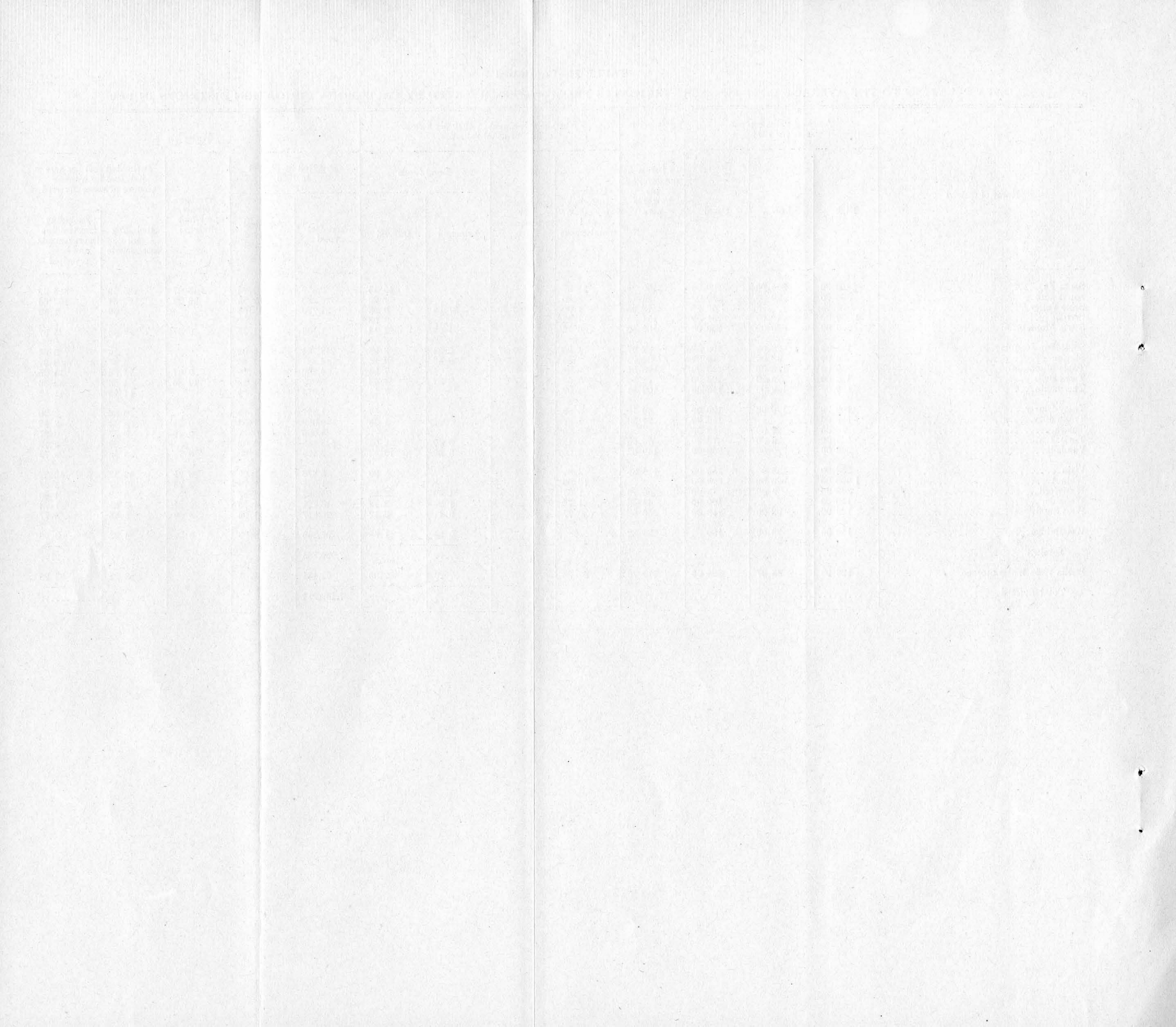


TABLE III
CALIFORNIA IRRIGATION DISTRICT CROP SUMMARY FOR 1930

Name of district	Gross area, acres	Irrigable area, acres	Area held by districts under tax deed, acres	Estimated number of holdings			Kind and acreage of crops reported										Area cropped				
				Farm land	Town lots	Total	Alfalfa	Grain and grain hay	Field and truck	Cotton	Rice	Vines	Deciduous fruits, nuts and olives	Citrus	Avacados	Not segregated	Dry farmed acres	Irrigated acres	Total acres		
Alpaugh.....	8,133	8,132	875	300		300	430	1,020	230	2,480							180		4,340	4,340	
Alta.....	129,300	112,600	None	2,700	2,150	4,850	8,312	3,000	769	1,322		44,700	8,030	832		23,000	35,335	89,965	125,300		
Anderson Cottonwood.....	32,000	28,064	1,500	360	390	750	8,056		3,114			855	1,640			350	2,115	14,015	16,130		
Banta-Carbona.....	15,624	15,156	1,279	225		225	3,611	693	9,071			61	90				1,630	13,526	15,156		
Bard.....	7,000	6,000	None	170		170	1,600	200	30	4,000			60	20		40	5,950	5,950			
Beaumont.....	4,141	3,161	None	413	477	890							2,000					2,000	2,000		
Big Springs.....	3,611	2,546	40	43		43	2,400	50									161	2,450	2,611		
Browns Valley.....	40,000	11,740	None	250	17	267	645	90	1,830			470	1,415	82		2,470	1,298	7,002	8,300		
Butte Valley.....	28,686	17,500	7,982	148	50	198	200	1,800									2,040	2,000	4,040		
Byron-Bethany.....	17,200	12,544	None	190	20	210	9,000		460				100	200			3,000	9,700	12,700		
Camp Far West.....	4,089	2,658	None	10		10	100	300						2,046				2,446	2,446		
Carmichael.....	3,138	3,038	10	315		315						1,962						1,962	1,962		
Carpenter.....	1,328	1,320	None	115	170	285		26							1,100		10	1,126	1,136		
Citrus Heights.....	3,158	3,066	36	284		284								2,237	130			2,652	2,652		
Compton-Delevan.....	12,652	11,500	720	10		10					2,442						2,000	2,442	4,442		
Consolidated.....	149,047	145,757	None	4,600		4,600										129,000		129,000	129,000		
Corcoran.....	51,606	51,000	None	281		281	2,911	4,852		9,220							18,017	16,983	35,000		
Cordia.....	5,461	5,421	862	44		44											360	1,910	1,910		
Deer Creek.....	1,907	1,663	None	13		13	200		200					1,300			100	1,900	2,000		
East Contra Costa.....	20,200	19,760	None	403	115	518	2,816	99	9,807			1,207						13,929	13,929		
El Camino.....	7,549	7,549	None	284		284	1,454		1,487			103	1,190					700	4,234	4,934	
El Dorado.....	30,000	19,905	None	480	550	1,030							6,000				1,000	6,000	7,000		
El Nido.....	9,330	7,405	None	112		112	2,480	419	151	330		51	65				600	3,496	4,096		
Fairoaks.....	3,900	3,400	3	270	150	420							1,850		750			2,600	2,600		
Fallbrook.....	10,217	10,200	None	293	78	371							7	655	189		1,163	851	2,014		
Foothill.....	55,875	43,500	None	1,000	200	1,200	200		150	100			8,000	3,500	6,000	20	100	15,050	18,070	33,120	
Fresno.....	243,100	239,080	None	8,970		8,970	19,517		29,836	1,951			94,230	26,115	1,024		8,090	60,539	180,763	241,302	
Glenn-Colusa.....	122,032	119,021	15,188	950		950	10,700	24,535	1,893				88	997			3,005	40,156	59,831	99,987	
Grenada.....	4,948	3,510	2,510	31	26	57	1,585											1,585	1,585	1,585	
Hemet.....	9,718	9,557															9,000		9,000	9,000	
Hot Spring Valley ¹	9,497	9,000		35		35	4,379	5,118										9,497	9,497	9,497	
Imperial.....	612,200	522,200	1,800	4,663	6,002	10,665	207,977	98,761	91,433	10,317	169		2,963	740	11,297	10	15,563	439,260	439,260	439,260	
Island No. 3.....	4,620	4,120	None	150		150											3,000	3,000	3,000	3,000	
Jacinto.....	11,554	11,496	80	185		185	1,591		1,000								831	6,000	4,052	10,052	
James.....	26,266	26,266	22,024	14		14	3,700	5,100		3,200		90		37			330	12,457	12,457	12,457	
La Canada.....	1,294	1,239	None			500											800		800	800	
Ladera.....	1,632	1,481	None	70	288	358												150	580	580	
Laguna.....	34,858	30,000	None	800		800											25,000	25,000	25,000	25,000	
Lakeland.....	23,283	23,283	1,676	23		23		3,000										3,000	3,000	3,000	
Lakeside.....	320	288	None	5	65	70											200	200	200	200	
La Mesa, Lemon Grove and Spring Valley.....	19,245	13,550	375	600	3,400	4,000			727					1,358	540		624	3,249	3,249	3,249	
Linden.....	13,700	13,000	None	250		250	300		500				250	6,400			6,219	7,450	13,669	13,669	
Lindsay-Strathmore.....	15,246	14,540	2,782	415		415			155	25			445	865	7,885		500	9,375	9,375	9,375	
Little Rock Creek.....	3,073	2,877	None	103		103								2,000				2,000	2,000	2,000	
Madera.....	352,000	222,000	None	2,000	2,000	4,000	15,865			27,691	70		25,326	8,437			1,879	100,204	79,268	179,472	
Maxwell.....	8,820	6,000	None								2,848							2,870	5,718	5,718	
Merced.....	190,025	171,709	930	2,540	2,145	4,685	19,004	37,373	20,067	7,956			14,326	19,793			1,957	124,346	124,346	124,346	
Modesto.....	81,203	78,778	None			5,500	16,645	13,800	9,809		736		10,207	11,615			4,292	7,808	67,104	75,002	
Mojave River ¹	27,665	20,000	None			200	250											10	20	655	655
Montague.....	26,117	18,531	960	100	215	315	1,500	5,500						400				2,500	7,000	9,500	
Naglee-Burk.....	2,871	2,846	165	53		53	1,182	625				10						1,050	2,867	2,867	
Nevada.....	266,000	164,000	None	1,800		1,800	1,800	774	1,977		584		4	996			4,335	8,670	8,670	8,670	
Newport Heights.....	1,503	1,503	None			570		20			450			80			40	630	680	680	
Newport Mesa.....	694	400	None			200					400							400	400	400	
Oakdale.....	74,240	66,800	1,136	1,800	1,000	2,800	3,966	846	2,675	1,384	1,961		2,646	4,378	50		3,007	18,859	20,913	39,772	
Oroville-Wyandotte.....	24,100	22,300	None	318	137	455								1,035	946	10	182	2,173	2,173	2,173	
Palmdale.....	4,756	4,698	None	171	103	274	68	120					20	580			208	996	996	996	
Palo Verde.....	88,693	70,000	None			1,150	6,944	1,040	1,094	16,302							45	25,425	25,425	25,425	
Paradise.....	11,260	9,836	265	555	121	676			100					3,000				3,200	3,200	3,200	
Potter Valley.....	5,042	4,195	None	103		103	800		300					600			200	1,600	1,900	3,500	
Princeton-Codora-Glenn.....	13,656	12,290	None	150		150	714		200		2,000			1,149			250	1,000	4,313	5,313	
Provident.....	22,805	21,000	4,887	23		23	50				6,392						30	6,472	6,472	6,472	
Ramona.....	660	594	None		230	230												61	61	61	61
Riverdale.....	15,830	14,800	20	250		250	5,000	2,000										7,000	7,000	7,000	
San Dieguito.....	3,900	3,700	None			1,300			1,215					35		600	150	2,000	2,000	2,000	

TABLE III—Continued
CALIFORNIA IRRIGATION DISTRICT CROP SUMMARY FOR 1930

Name of district	Gross area, acres	Irrigable area, acres	Area held by districts under tax deed, acres	Estimated number of holdings			Kind and acreage of crops reported										Area cropped				
				Farm land	Town lots	Total	Alfalfa	Grain and grain hay	Field and truck	Cotton	Rice	Vines	Deciduous fruits, nuts and olives	Citrus	Avacados	Not segregated	Dry farmed acres	Irrigated acres	Total acres		
Santa Fe.....	10,106	6,980	None	316	140	456	100		250					160	1,640	750	100			3,000	3,000
San Ysidro.....	502	462	14		225	225											110			110	110
Scott Valley.....	5,125	4,000	None	28		28	2,000	2,000											1,000	4,000	5,000
Serrano.....	1,499	1,319	None	170		170			30					60	1,172	46				1,308	1,308
South Montebello.....	827	827	None			300			430					20	377					827	827
South San Joaquin.....	71,112	66,465	40	1,995	1,000	2,995	17,930	12,673	6,628	383		10,891	4,163					1,670	11,976	54,338	66,314
Stinson.....	11,150	11,000	536	22	3	25	730	2,036	215	3,084										6,065	6,065
Table Mountain.....	1,955	1,780		12		12	45					400			3					448	448
Terra Bella.....	12,285	12,070	946	700	200	900						335	1,317	1,811	3		47	None		3,510	3,510
Thermalito.....	3,110	2,940	None	225	175	400	10	20	50			145	600	640		2	533			2,000	2,000
Tracy-Clover.....	1,084	1,034	None	140		140	600	243												843	843
Tranquillity.....	10,750	10,190	2,750	156	90	246	1,400	2,000		100									2,000	5,500	5,500
Tulare.....	34,000	30,600		570	25	595	8,000	10,000	6,000			3,000								27,000	27,000
Turlock.....	181,556	179,278	None			7,500	41,648	28,597	36,869	205			13,234	9,683				6,277	20,000	136,513	156,513
Vandalia.....	1,276	1,253	None	42		42									1,144					1,144	1,144
Vista.....	18,162	14,610	None			1,036	9		1,587			35			1,228	2,387	291	155		5,537	5,692
Walnut.....	911	911	None	65		65	20		50					50	791					911	911
Waterford.....	14,110	11,424	None	284	74	358	1,053	274	1,231	365			735	1,580						5,238	5,238
West Side.....	11,828	11,811	40			498	6,317	2,791	1,827				411					476	1,673	11,822	13,495
West Stanislaus.....	22,137	22,000	None	86	14	100	2,442	707	7,358	290				240					6,643	11,037	17,680
Williams.....	9,009	8,000	Included	with Glenn	Colusa.																
Woodbridge.....	14,164	13,566	None	145		145	1,176	94	2,423				2,210					494	7,185	6,397	13,582
Totals.....	3,470,236	2,919,593	72,431			86,219	450,426	273,779	254,686	90,705	41,051	239,500	139,485	41,025	4,554	254,676	378,826	1,789,887		11,615	2,168,713
Buena Vista Water Storage.....	78,596	50,400	None	70	29	99	780	4,450	2,235	4,150										11,615	11,615

¹ No information furnished for 1930. Data given is from 1929 information.

TABLE IV—Continued
 SUMMARY OF TOTAL ASSESSMENTS LEVIED, TAX CERTIFICATES SOLD AND UNREDEEMED, PERCENTAGES OF ASSESSMENTS DELINQUENT,
 REVENUES RECEIVED FROM WATER TOLLS AND FROM SOURCES OTHER THAN ASSESSMENTS AND WATER
 TOLLS IN CALIFORNIA IRRIGATION DISTRICTS

Name of district	Unredeemed tax certificates January 1, 1931, for assessment years 1927-28 to 1929-30				Percentage of assessment remaining unpaid January 1, 1931, for assessment years 1927-28 to 1929-30				Assessment, 1929-1930				Assessment, 1930-1931					Water tolls collected, 1930	Collected from sources other than assessments and water tolls, 1930		
	1928	1929	1930	Total	1927-28	1928-29	1929-30	Total	Total assessed valuation	Rate per \$100 of valuation	Total assessment levied	Tax certificates sold	Total assessed valuation	Rate per \$100 valuation						Total assessment levied	
														Bond for		General fund	All other funds				Total rate
														Retirement	Interest						
Palo Verde	\$170,562	\$252,282	\$442,234	\$865,078	25.3	30.2	54.9	37.4	\$4,908,960	\$16.95	\$731,656	\$442,234	\$3,898,650	\$2.05	\$7.35			\$9.40	\$366,473	\$107,011	None
Paradise	7,443	10,002	13,814	31,259	14.6	19.5	26.9	20.4	1,621,332	7.50	46,600	14,680	61,289	5.14		\$2.00		7.50	46,072	None	None
Potter Valley	None	None	None	None	None	None	None	None	256,116	4.45	11,397	None	261,280	2.45		2.00		4.45	11,627	6,213	None
Princeton-Codora-Glenn	2,006	2,930	4,110	9,046	4.6	6.5	8.8	6.7	939,000	4.50	42,225	9,046	939,270	1.30		3.00		4.30	38,918	15,342	\$675
Provident	39,008	49,830	54,932	143,770	25.8	33.0	36.3	31.7	1,616,520	8.50	137,404	54,932	1,611,500	2.20		4.30	2.00	8.50	136,978	45,588	7,425
Ramona	76	84	425	588	1.1	1.5	6.5	3.1	74,073	8.00	5,926	425	81,410		6.00			6.00	4,885	4,767	1,084
Riverdale	174	367	247	788	0.5	1.0	0.7	0.7	1,126,659	3.00	33,800	3,622	1,168,750	0.75		25	\$0.86	2.25	26,297	None	None
San Dieguito	427	4,191	5,211	9,829	0.1	5.8	7.6	5.0	2,072,368	3.00	62,171	6,686	2,037,737	64	1.36	1.71		4.00	81,173	31,820	9,477
Santa Fe	568	5,450	5,450	6,018		0.5	4.8	2.7	1,578,000	6.59	103,990	5,517	1,689,430		2.40	4.44		6.93	117,077	35,756	1,172
San Ysidro	137	176	179	492	3.4	3.2	3.1	3.2	105,040	5.00	5,252	224	105,300		1.19	3.81		5.00	5,265	10,721	491
Scott Valley									256,235	8.00	20,499	None	256,570	4.03	1.73	2.24		8.00	20,526	None	None
Serrano									1,321,140				1,321,140		70	30		1.00	13,211	None	None
South Montebello	121	48	189	358	0.8	0.3	1.2	0.8	703,248	2.00	14,065	283	703,248	1.12	88			2.00	14,065	10,331	None
South San Joaquin	8,949	9,283	20,803	39,035	1.9	1.9	3.9	2.6	6,780,615	7.10	481,424	25,422	6,754,890	50	4.33	1.90	37	7.10	479,592	None	None
Stinson	18,226	27,871	46,675	92,772	34.9	53.4	89.5	59.3	558,341	8.50	47,387	46,675	558,341	1.57	4.63	5.70		11.90	66,443	25,952	None
Table Mountain		140	3,000	3,140		0.1	22.7	12.0	240,670	5.00	12,034	2,962	240,680		4.70	10		4.80	11,553	2,731	3,200
Terra Bella	18,002	27,742	41,801	87,545	15.4	21.4	30.5	22.8	1,247,148	10.00	124,715	47,597	1,246,183	2.84	4.98	3.68		11.50	143,311	84,861	629
Thermalito	4,711	5,297	3,413	13,421	13.3	15.1	9.3	12.6	446,101	7.45	33,235	7,310	448,417		4.12	3.33		7.45	34,680	None	None
Tracy-Clover	882	1,153	2,460	4,495	9.1	11.9	24.0	15.2	103,380	9.00	9,304	2,907	103,380		3.47	5.53		9.00	9,304	None	231
Tranquillity	4,585	4,296	10,795	19,676	15.0	17.7	28.8	21.3	1,248,724	3.00	37,462	12,054	1,218,114		2.00			2.00	14,362	2,589	None
Tulare	429	326	630	1,385	3.3	2.5	13.5	3.8	1,869,721	50	9,349	1,259	1,762,895			50		50	8,800	490	508
Turlock	4,695	8,394	18,834	31,923	0.7	1.3	3.0	1.6	13,556,045	4.25	576,132	22,810	13,527,175	1.00	2.87	13		4.00	541,087	None	611,614
Vandalia	1,334	1,334	1,406	4,074	5.2	5.2	5.2	5.2	255,067	9.49	24,307	1,406	255,067	2.90	5.26	1.33		9.49	24,206	19,909	137
Vista	12,038	33,879	54,233	100,150	6.2	17.3	27.5	17.1	2,285,644	7.80	179,059	61,589	2,311,189		5.26	2.54		7.80	180,273	168,760	17,404
Walnut			168	168			17.4	17.4	911,454	1.00		168	911,000			1.00		1.00	9,110	3,626	None
Waterford	59	647	15,680	16,386	0.1	1.0	2.2	0.8	1,079,270	5.90	63,676	16,702	1,079,313	1.64	3.16	2.10		6.90	74,471	None	None
West Side	410	447	1,331	2,188	0.7	0.8	1.7	1.1	1,232,525	5.75	70,870	1,964	1,238,871	1.29	2.71	1.75		5.75	71,241	38,495	1,887
West Stanislaus									1,106,658	4.00	44,266	325	2,206,308		3.25	54		4.00	88,252	78,760	848
Woodbridge		114	434	548		0.5	1.7	1.1	1,183,680	2.00	23,674	467	1,212,609	1.30	70			2.00	24,252	22,879	2,755
Totals	\$1,001,452	\$1,286,592	\$1,913,874	\$4,201,918					\$246,741,302	\$4.32	\$10,660,232	\$2,184,281	\$222,890,413					\$4.60	\$10,257,945	\$2,356,032	\$2,331,757
Buena Vista Water Storage													\$945,000		\$7.00	\$4.50		\$11.50	\$108,675	None	None
	\$1,001,452	\$1,286,592	\$1,913,874	\$4,201,918					\$246,741,302	\$4.32	\$10,660,232	\$2,184,281	\$223,835,413					\$4.63	\$10,366,620	\$2,356,032	\$2,331,757

¹ Rate computed from total assessment levied for bond and interest funds.
² Rate computed from total assessment levied for all funds.
³ Assessment levied insufficient for interest fund with no assessment for bond retirements due.

TABLE V
SUMMARY OF STATISTICAL DATA RELATING TO BONDS AND OUTSTANDING WARRANTS OF CALIFORNIA
IRRIGATION DISTRICTS,¹ JANUARY 1, 1931
 (Totals for each district in bold face type)

Name of district	Number of bond issues	Date of bonds	Range of maturities	Coupon rate, per cent	Status of bond issues January 1, 1931										Interest bearing warrants outstanding January 1, 1931		
					Face value of all issues voted			Disposition of bonds voted				Disposition of bonds sold				Bond payments due and not paid	
					Original	Refunding	Total	Original issues		Refunding issues exchanged or sold	Unsold, all issues	Refunded	Paid	Outstanding		Principal	Interest ²
								Canceled	Sold								
Alpaugh	1	July 1, 1916	July 1, 1927-1946	6	\$283,000		\$283,000	None			None		\$28,300	\$254,700	None	None	\$9,435
Alta	1 Ref.	Feb. 15, 1889 Feb. 4, 1902	Jan. 1, 1923-1942	5	675,000	\$500,000	1,175,000			\$492,000	\$140,000	\$492,000	313,500	229,500	None	None	None
Anderson-Cottonwood	1	Jan. 1, 1916	Jan. 1, 1937-1956	6	480,000		480,000	None			None		105,000	1,150,000	None	None	None
	2	July 1, 1917	July 1, 1938-1957	6	575,000		575,000							480,000			
	3	July 1, 1920	July 1, 1925-1934	6	200,000		200,000						105,000	575,000			
Banta-Carbona	1	Aug. 1, 1924	July 1, 1940-1964	6	705,000		705,000	None			26,940		None	1,137,060	None	None	52,748
	2	Dec. 1, 1925	July 1, 1941-1965	6	125,000		125,000							705,000			
	3	Jan. 1, 1927	Jan. 1, 1948-1967	6	334,000		334,000				26,940			125,000			
Baxter Creek ¹	1	July 1, 1921	Jan. 1, 1926-1943	6	511,000		511,000	None			None		None	511,000	\$87,000	\$224,010	No record
Beaumont	1	Nov. 1, 1920	Jan. 1, 1926-1944	6	230,000		230,000	None			None		46,000	254,000	None	None	1,000
	2	July 1, 1926	July 1, 1931-1950	6	70,000		70,000						46,000	184,000			
Big Springs	1	July 1, 1928	Jan. 1, 1930-1946	6	69,000		69,000	None			2,000		4,000	63,000	3,000	None	None
Browns Valley	1				140,000		140,000	None			None		140,000	None	None	None	None
Butte Valley	1	Sept. 1, 1923	Jan. 1, 1944-1963	6	594,000		594,000	None			None		None	594,000	None	139,560	None
Byron-Bethany	1	Nov. 1, 1920	Jan. 1, 1924-1952	6	550,000		550,000	None			None		54,000	596,000	None	None	10,738
	2	Sept. 1, 1923	July 1, 1933-1955	6	100,000		100,000						54,000	496,000			
Camp Far West	1	July 1, 1927	July 1, 1937-1956	6	200,000		200,000	None			21,000			179,000	None	None	None
Carmichael	1	July 1, 1916	July 1, 1923-1942	6	90,000		90,000	None			None		23,400	96,600	None	None	None
	2	Jan. 1, 1926	Jan. 1, 1933-1945	6	30,000		30,000						23,400	66,600			
Carpenter	1	July 1, 1929	July 1, 1934-1953	6	200,000		200,000	None			None		None	200,000	None	None	None
Citrus Heights	1	Aug. 1, 1921	July 1, 1926-1945	6	262,000		262,000	None			47,000		32,000	183,000	None	None	None
Compton-Delevan	1	Dec. 1, 1921	Jan. 1, 1922-1936	6	575,000		575,000	\$52,000			111,000		273,000	139,000	None	None	None
	1 Ref.	Jan. 1, 1927	Jan. 1, 1937-1950	6		384,000	384,000	52,000	523,000	273,000	111,000	273,000	139,000	111,000	273,000		
Consolidated	1	July 1, 1922	Jan. 1, 1924-1933	5½	775,000		775,000	None			None		615,000	235,000	None	None	None
	2	July 1, 1922	Jan. 1, 1924-1933	5½	75,000		75,000						560,000	215,000			
Corcoran	1	Jan. 1, 1920	Jan. 1, 1931-1955	6	760,000		760,000	None					10,000	750,000	None	None	55,167
Cordua	1	June 1, 1920	July 1, 1925-1940	6	192,000		192,000	None			94,000		102,000	258,000	None	None	None
	2	June 1, 1921	July 1, 1925-1940	6	75,000		75,000						72,000	120,000			
	3 Ref.	June 1, 1925	July 1, 1941-1951	6		187,000	187,000			103,000		84,000	30,000	35,000			
Crooks Canyon ¹	1				80,000		80,000	80,000	80,000					None			None

TABLE V—Continued
SUMMARY OF STATISTICAL DATA RELATING TO BONDS AND OUTSTANDING WARRANTS OF CALIFORNIA
IRRIGATION DISTRICTS, 1 JANUARY 1, 1931
 (Totals for each district in bold face type)

Name of district	Number of bond issues	Date of bonds	Range of maturities	Coupon rate, per cent	Status of bond issues January 1, 1931											Interest bearing warrants outstanding January 1, 1931	
					Face value of all issues voted			Disposition of bonds voted				Disposition of bonds sold			Bond payments due and not paid		
					Original	Refunding	Total	Original issues		Refunding issues exchanged or sold	Unsold, all issues	Refunded	Paid	Outstanding	Principal		Interest ²
								Canceled	Sold								
Deer Creek	1	Sept. 1, 1927	July 1, 1929-1938	6	\$25,000		\$25,000	None					\$5,000	\$20,000	None	None	None
East Contra Costa ⁴	1	Jan. 1, 1924	Jan. 1, 1935-1954	6	514,000		1,324,000	\$23,000			None		65,000	1,236,000	None	None	None
Brentwood	1	July 1, 1921	July 1, 1927-1946	6	650,000		650,000		514,000				65,000	514,000			
Knightsen	1	Mar. 1, 1922	Jan. 1, 1928-1947	6	160,000		160,000	23,000	650,000					585,000			
Lone Tree	1			6					137,000					137,000			
El Camino	1	Nov. 1, 1928	Jan. 1, 1937-1956	6	275,000		430,000	None			\$7,000			423,000	None	\$12,690	\$5,092
1st Div.			Jan. 1, 1937-1956	6	275,000		275,000		275,000					275,000			
2d Div.			Jan. 1, 1940-1952	6	28,000		28,000		28,000					28,000			
3d Div.			Jan. 1, 1940-1956	6	127,000		127,000		120,000		7,000			120,000			
El Dorado	1	Mar. 1, 1927	Jan. 1, 1948-1967	6	1,300,000		1,300,000	None			612,000		None	688,000	None	None	None
				6			1,300,000		688,000		612,000		None	688,000			
El Nido	1	Jan. 1, 1931	Jan. 1, 1934-1951	6	135,000		135,000	None			135,000			None			None
				6			135,000							None			
Fairoaks	1	Oct. 1, 1918	July 1, 1924-1943	6	200,000		200,000	None			40,000		44,000	116,000	None	None	None
				6			200,000		160,000		40,000		44,000	116,000			
Fallbrook							None							None			3
Foothill	1	Sept. 1, 1927	July 1, 1948-1967	6	2,270,000		2,270,000	None			2,270,000		None	None	None	None	None
				6			2,270,000				2,270,000		None	None			
Fresno	1	Mar. 18, 1921	Jan. 1, 1923-1932	6	1,750,000		2,000,000	None			None		1,745,000	255,000	None	None	None
	2	Mar. 18, 1921	Jan. 1, 1923-1932	6	250,000		1,750,000		1,750,000		None		1,528,000	222,000			
				6			250,000		250,000				217,000	33,000			
Glenn-Colusa	1	Oct. 1, 1920	Jan. 1, 1922-1941	6	2,587,000		2,887,000	182,850			15,000	\$285,000	852,650	1,551,500	None	None	143,351
	1 Ref.	Nov. 1, 1924	Jan. 1, 1935-1941	6		\$300,000	2,587,000	182,850	2,404,150	\$285,000	15,000	285,000	852,650	1,266,500			
				6			300,000						285,000	285,000			
Grenada	1	July 1, 1921	July 1, 1926-1940	6	240,000		240,000	None			None		None	240,000	\$80,000	59,600	22,564
				6			240,000		240,000		None		None	240,000	80,000		
Hot Springs Valley	1	May 1, 1920	Jan. 1, 1923-1936	6	100,000		160,000	None			None		58,000	102,000	11,000	None	None
	2	Oct. 15, 1921	Jan. 1, 1927-1939	6	60,000		100,000		100,000		None		52,000	48,000	8,000		
				6			60,000		60,000		None		6,000	54,000	3,000		
Imperial	1	Jan. 1, 1915	Jan. 1, 1936-1955	5	3,500,000		16,000,000	None			None		1,150,000	14,850,000	None	None	610,080
	2	July 1, 1917	July 1, 1938-1957	5	3,500,000		3,500,000		3,500,000		None			3,500,000			
	3	Oct. 1, 1919	July 1, 1925-1934	5 1/2	2,500,000		2,500,000		2,500,000		None			2,500,000			
	4	July 1, 1922	July 1, 1935-1956	6	2,500,000		2,500,000		2,500,000		None	1,150,000		1,350,000			
				6			7,500,000		7,500,000		None			7,500,000			
Jacinto	1	Dec. 1, 1920	Jan. 1, 1923-1942	6	238,000		238,000	None			None		70,000	168,000	None	None	None
				6			238,000		238,000		None		70,000	168,000			
James	1	May 15, 1920	Jan. 1, 1928-1947	6	1,000,000		1,000,000	None			None		5,000	995,000	195,000	255,240	120
				6			1,000,000		1,000,000		None		5,000	995,000	195,000		
La Canada	1	July 1, 1925	July 1, 1936-1960	5	154,000		328,000	None			None		None	328,000	None	None	None
	2	July 1, 1928	July 1, 1949-1968	5	174,000		154,000		154,000		None			154,000			
				5			174,000		174,000		None			174,000			
Ladera							200,000	None			200,000			None			None
							200,000		200,000		200,000			None			
Laguna	1	July 1, 1921	July 1, 1923-1932	6	265,000		265,000	None			None		212,000	53,000	None	None	None
				6			265,000		265,000		None		212,000	53,000			
Lakeside	1	Feb. 1, 1925	Jan. 1, 1946-1965	6	35,000		35,000	None			None			35,000	None	None	8,000
				6			35,000		35,000		None			35,000			
La Mesa, Lemon Grove and Spring Valley	1	July 1, 1914	June 30, 1935-1939	6	1,232,500		3,732,500	1,166,500			500,000		10,000	2,056,000	None	20,328	14,811
	2	Jan. 1, 1925	Jan. 1, 1946-1965	6	2,500,000		1,232,500	1,166,500	66,000				10,000	56,000			
				6			2,500,000		2,000,000		500,000			2,000,000			

Amounts for each month to which referred

Case No.	Name of Debtor	Date of Filing	Amount of Bonds Issued		Amount of Bonds Outstanding		Amount of Bonds Paid		Total	Date of Payment	Remarks
			Original	Interest	Original	Interest	Original	Interest			
1000	John Doe	1930	100.00	10.00	100.00	10.00	0.00	100.00	10.00		
1001	John Doe	1930	200.00	20.00	200.00	20.00	0.00	200.00	20.00		
1002	John Doe	1930	300.00	30.00	300.00	30.00	0.00	300.00	30.00		
1003	John Doe	1930	400.00	40.00	400.00	40.00	0.00	400.00	40.00		
1004	John Doe	1930	500.00	50.00	500.00	50.00	0.00	500.00	50.00		
1005	John Doe	1930	600.00	60.00	600.00	60.00	0.00	600.00	60.00		
1006	John Doe	1930	700.00	70.00	700.00	70.00	0.00	700.00	70.00		
1007	John Doe	1930	800.00	80.00	800.00	80.00	0.00	800.00	80.00		
1008	John Doe	1930	900.00	90.00	900.00	90.00	0.00	900.00	90.00		
1009	John Doe	1930	1000.00	100.00	1000.00	100.00	0.00	1000.00	100.00		
1010	John Doe	1930	1100.00	110.00	1100.00	110.00	0.00	1100.00	110.00		
1011	John Doe	1930	1200.00	120.00	1200.00	120.00	0.00	1200.00	120.00		
1012	John Doe	1930	1300.00	130.00	1300.00	130.00	0.00	1300.00	130.00		
1013	John Doe	1930	1400.00	140.00	1400.00	140.00	0.00	1400.00	140.00		
1014	John Doe	1930	1500.00	150.00	1500.00	150.00	0.00	1500.00	150.00		
1015	John Doe	1930	1600.00	160.00	1600.00	160.00	0.00	1600.00	160.00		
1016	John Doe	1930	1700.00	170.00	1700.00	170.00	0.00	1700.00	170.00		
1017	John Doe	1930	1800.00	180.00	1800.00	180.00	0.00	1800.00	180.00		
1018	John Doe	1930	1900.00	190.00	1900.00	190.00	0.00	1900.00	190.00		
1019	John Doe	1930	2000.00	200.00	2000.00	200.00	0.00	2000.00	200.00		
1020	John Doe	1930	2100.00	210.00	2100.00	210.00	0.00	2100.00	210.00		
1021	John Doe	1930	2200.00	220.00	2200.00	220.00	0.00	2200.00	220.00		
1022	John Doe	1930	2300.00	230.00	2300.00	230.00	0.00	2300.00	230.00		
1023	John Doe	1930	2400.00	240.00	2400.00	240.00	0.00	2400.00	240.00		
1024	John Doe	1930	2500.00	250.00	2500.00	250.00	0.00	2500.00	250.00		
1025	John Doe	1930	2600.00	260.00	2600.00	260.00	0.00	2600.00	260.00		
1026	John Doe	1930	2700.00	270.00	2700.00	270.00	0.00	2700.00	270.00		
1027	John Doe	1930	2800.00	280.00	2800.00	280.00	0.00	2800.00	280.00		
1028	John Doe	1930	2900.00	290.00	2900.00	290.00	0.00	2900.00	290.00		
1029	John Doe	1930	3000.00	300.00	3000.00	300.00	0.00	3000.00	300.00		
1030	John Doe	1930	3100.00	310.00	3100.00	310.00	0.00	3100.00	310.00		
1031	John Doe	1930	3200.00	320.00	3200.00	320.00	0.00	3200.00	320.00		
1032	John Doe	1930	3300.00	330.00	3300.00	330.00	0.00	3300.00	330.00		
1033	John Doe	1930	3400.00	340.00	3400.00	340.00	0.00	3400.00	340.00		
1034	John Doe	1930	3500.00	350.00	3500.00	350.00	0.00	3500.00	350.00		
1035	John Doe	1930	3600.00	360.00	3600.00	360.00	0.00	3600.00	360.00		
1036	John Doe	1930	3700.00	370.00	3700.00	370.00	0.00	3700.00	370.00		
1037	John Doe	1930	3800.00	380.00	3800.00	380.00	0.00	3800.00	380.00		
1038	John Doe	1930	3900.00	390.00	3900.00	390.00	0.00	3900.00	390.00		
1039	John Doe	1930	4000.00	400.00	4000.00	400.00	0.00	4000.00	400.00		
1040	John Doe	1930	4100.00	410.00	4100.00	410.00	0.00	4100.00	410.00		
1041	John Doe	1930	4200.00	420.00	4200.00	420.00	0.00	4200.00	420.00		
1042	John Doe	1930	4300.00	430.00	4300.00	430.00	0.00	4300.00	430.00		
1043	John Doe	1930	4400.00	440.00	4400.00	440.00	0.00	4400.00	440.00		
1044	John Doe	1930	4500.00	450.00	4500.00	450.00	0.00	4500.00	450.00		
1045	John Doe	1930	4600.00	460.00	4600.00	460.00	0.00	4600.00	460.00		
1046	John Doe	1930	4700.00	470.00	4700.00	470.00	0.00	4700.00	470.00		
1047	John Doe	1930	4800.00	480.00	4800.00	480.00	0.00	4800.00	480.00		
1048	John Doe	1930	4900.00	490.00	4900.00	490.00	0.00	4900.00	490.00		
1049	John Doe	1930	5000.00	500.00	5000.00	500.00	0.00	5000.00	500.00		
1050	John Doe	1930	5100.00	510.00	5100.00	510.00	0.00	5100.00	510.00		
1051	John Doe	1930	5200.00	520.00	5200.00	520.00	0.00	5200.00	520.00		
1052	John Doe	1930	5300.00	530.00	5300.00	530.00	0.00	5300.00	530.00		
1053	John Doe	1930	5400.00	540.00	5400.00	540.00	0.00	5400.00	540.00		
1054	John Doe	1930	5500.00	550.00	5500.00	550.00	0.00	5500.00	550.00		
1055	John Doe	1930	5600.00	560.00	5600.00	560.00	0.00	5600.00	560.00		
1056	John Doe	1930	5700.00	570.00	5700.00	570.00	0.00	5700.00	570.00		
1057	John Doe	1930	5800.00	580.00	5800.00	580.00	0.00	5800.00	580.00		
1058	John Doe	1930	5900.00	590.00	5900.00	590.00	0.00	5900.00	590.00		
1059	John Doe	1930	6000.00	600.00	6000.00	600.00	0.00	6000.00	600.00		
1060	John Doe	1930	6100.00	610.00	6100.00	610.00	0.00	6100.00	610.00		
1061	John Doe	1930	6200.00	620.00	6200.00	620.00	0.00	6200.00	620.00		
1062	John Doe	1930	6300.00	630.00	6300.00	630.00	0.00	6300.00	630.00		
1063	John Doe	1930	6400.00	640.00	6400.00	640.00	0.00	6400.00	640.00		
1064	John Doe	1930	6500.00	650.00	6500.00	650.00	0.00	6500.00	650.00		
1065	John Doe	1930	6600.00	660.00	6600.00	660.00	0.00	6600.00	660.00		
1066	John Doe	1930	6700.00	670.00	6700.00	670.00	0.00	6700.00	670.00		
1067	John Doe	1930	6800.00	680.00	6800.00	680.00	0.00	6800.00	680.00		
1068	John Doe	1930	6900.00	690.00	6900.00	690.00	0.00	6900.00	690.00		
1069	John Doe	1930	7000.00	700.00	7000.00	700.00	0.00	7000.00	700.00		
1070	John Doe	1930	7100.00	710.00	7100.00	710.00	0.00	7100.00	710.00		
1071	John Doe	1930	7200.00	720.00	7200.00	720.00	0.00	7200.00	720.00		
1072	John Doe	1930	7300.00	730.00	7300.00	730.00	0.00	7300.00	730.00		
1073	John Doe	1930	7400.00	740.00	7400.00	740.00	0.00	7400.00	740.00		
1074	John Doe	1930	7500.00	750.00	7500.00	750.00	0.00	7500.00	750.00		
1075	John Doe	1930	7600.00	760.00	7600.00	760.00	0.00	7600.00	760.00		
1076	John Doe	1930	7700.00	770.00	7700.00	770.00	0.00	7700.00	770.00		
1077	John Doe	1930	7800.00	780.00	7800.00	780.00	0.00	7800.00	780.00		
1078	John Doe	1930	7900.00	790.00	7900.00	790.00	0.00	7900.00	790.00		
1079	John Doe	1930	8000.00	800.00	8000.00	800.00	0.00	8000.00	800.00		
1080	John Doe	1930	8100.00	810.00	8100.00	810.00	0.00	8100.00	810.00		
1081	John Doe	1930	8200.00	820.00	8200.00	820.00	0.00	8200.00	820.00		
1082	John Doe	1930	8300.00	830.00	8300.00	830.00	0.00	8300.00	830.00		
1083	John Doe	1930	8400.00	840.00	8400.00	840.00	0.00	8400.00	840.00		
1084	John Doe	1930	8500.00	850.00	8500.00	850.00	0.00	8500.00	850.00		
1085	John Doe	1930	8600.00	860.00	8600.00	860.00	0.00	8600.00	860.00		
1086	John Doe	1930	8700.00	870.00	8700.00	870.00	0.00	8700.00	870.00		
1087	John Doe	1930	8800.00	880.00	8800.00	880.00	0.00	8800.00	880.00		
1088	John Doe	1930	8900.00	890.00	8900.00	890.00	0.00	8900.00	890.00		
1089	John Doe	1930	9000.00	900.00	9000.00	900.00	0.00	9000.00	900.00		
1090	John Doe	1930	9100.00	910.00	9100.00	910.00	0.00	9100.00	910.00		
1091	John Doe	1930	9200.00	920.00	9200.00	920.00	0.00	9200.00	920.00		
1092	John Doe	1930	9300.00	930.00	9300.00	930.00	0.00	9300.00	930.00		
1093	John Doe	1930	9400.00	940.00	9400.00	940.00	0.00	9400.00	940.00		
1094	John Doe	1930	9500.00	950.00	9500.00	950.00	0.00	9500.00	950.00		
1095	John Doe	1930	9600.00	960.00	9600.00	960.00	0.00	9600.00	960.00		
1096	John Doe	1930	9700.00	970.00	9700.00						

TABLE V—Continued
 SUMMARY OF STATISTICAL DATA RELATING TO BONDS AND OUTSTANDING WARRANTS OF CALIFORNIA
 IRRIGATION DISTRICTS,¹ JANUARY 1, 1931
 (Totals for each district in bold face type)

Name of district	Number of bond issues	Date of bonds	Range of maturities	Coupon rate, per cent	Status of bond issues January 1, 1931											Interest bearing warrants outstanding January 1, 1931	
					Face value of all issues voted			Disposition of bonds voted				Disposition of bonds sold			Bond payments due and not paid		
					Original	Refunding	Total	Original issues		Refunding issues exchanged or sold	Unsold, all issues	Refunded	Paid	Outstanding	Principal		Interest ²
								Canceled	Sold								
Oroville-Wyandotte	1	Jan. 1, 1923	Jan. 1, 1944-1963	6	\$2,000,000		\$2,000,000	None	\$1,095,000		\$905,000	None	None	\$1,095,000	None	None	\$47,860
Owens Valley ¹	1	Jan. 1, 1924	Jan. 1, 1940-1959	5½	1,650,000		1,650,000	None	471,500		1,178,500	None	None	471,500	None	None	None
Palmdale	1 2 3	May 16, 1920 May 1, 1921 June 1, 1925	Jan. 1, 1941-1960 Jan. 1, 1933-1942 Jan. 1, 1941-1960	6 6 6	382,000 63,000 100,000		545,000	None	382,000 63,000		100,000	None	None	445,000	None	\$146,850	22,436
Palo Verde	1	Feb. 1, 1916	Feb. 1, 1922-1935	6	500,000		500,000	\$32,000	500,000		1,562,000	\$213,000	\$470,000	4,230,330	\$41,000	249,805	138,698
Mutual Water Co.	1	May 1, 1918	May 1, 1919-1958	6½	1,285,951		1,285,951	32,000	1,253,951			90,000	210,000	200,000			
Levee District	2	Nov. 1, 1922	Nov. 1, 1923-1962	6½	371,379		371,379		371,379			27,000	224,000	933,951	32,000		
Drainage District	1	Dec. 1, 1921	Jan. 1, 1933-1942	6	850,000		850,000		850,000				36,000	308,379	9,000		
Irrigation District	1 1st Div.	Sept. 1, 1925	July 1, 1937-1955	6	3,114,000		3,114,000		1,650,000			1,464,000		1,650,000			
Irrigation District	1 2d Div.	Sept. 1, 1925	July 1, 1938-1955	6	173,000		173,000		75,000			98,000		75,000			
Irrigation District	2 Ref.	Sept. 1, 1925	July 1, 1937-1955	6		\$213,000	213,000			\$213,000				213,000			
Paradise	1 2	May 1, 1917 July 1, 1920	May 1, 1938-1957 July 1, 1925-1956	6 6	350,000 140,000		490,000	None	350,000 140,000		None	9,000	9,000	481,000	None	None	None
Potter Valley	1	July 1, 1928	July 1, 1933-1952	5½	100,000		100,000	None	97,000		3,000	3,000	None	97,000	None	None	None
Princeton-Cordova-Glenn	1	July 1, 1918	July 1, 1939-1958	6	175,000		175,000	None	175,000		None	None	None	175,000	None	None	3,815
Provident	1 2	Aug. 15, 1918 Aug. 9, 1921	Aug. 15, 1930-1949 July 1, 1922-1933	6 6	1,000,000 190,000		1,190,000	None	1,000,000 190,000		None	186,000	8,000	1,004,000	12,000	24,870	None
Ramona	1	July 1, 1926	July 1, 1947-1966	6	91,000		91,000	None	91,000		None	None	None	91,000	None	None	3,728
Red Rock Creek ¹	1 1st Div.	Jan. 1, 1926	Jan. 1, 1947-1966	6	175,000 267,160		442,160		175,000 267,160		442,160		None				10,000
Riverdale	1	Oct. 1, 1922	July 1, 1925-1933	6	123,000		123,000	None	123,000		None	73,000	73,000	50,000	None	None	None
San Dieguito	1	April 1, 1923	Jan. 1, 1931-1950	6	400,000		400,000	None	400,000		None	11,000	11,000	389,000	None	None	None
Santa Fe	1	Nov. 1, 1923	July 1, 1933-1952	6	700,000		700,000	None	700,000		None	None	None	700,000	None	None	None
San Ysidro	1	Jan. 1, 1913	Jan. 1, 1934-1943	5	25,000		25,000	None	25,000		None	None	None	25,000	None	None	22,759
Scott Valley	1	July 1, 1920	July 1, 1923-1937	6	125,000		125,000	None	125,000		None	56,000	56,000	69,000	None	None	None
Serrano	1	July 1, 1929	July 1, 1934-1953	6	200,000		200,000	None	200,000		None	None	None	200,000	None	None	None
South Montebello	1	June 30, 1923	Jan. 1, 1926-1945	6	125,000		125,000	None	125,000		None	37,500	37,500	87,500	None	None	None
South San Joaquin	1 2 3 4 5 6	July 1, 1910 April 18, 1913 July 1, 1913 Sept. 1, 1919 Nov. 6, 1923 June 21, 1925	July 1, 1931-1940 April 18, 1934-1942 July 1, 1934-1943 July 1, 1940-1959 July 1, 1944-1963 Jan. 1, 1927-1965	5 5 5 5½ 5½ 5	1,875,000 1,170,000 790,000 500,000 550,000 1,100,000		5,985,000	None	1,875,000 1,170,000 790,000 500,000 550,000 1,100,000		None	45,000	5,940,000	None	None		165,656

SUMMARY OF STATISTICAL DATA RELATING TO BILLS AND OUTSTANDING PARAGRAPHS IN ALABAMA LEGISLATION DISTRICTS JANUARY 1, 1911

(Form for each district in blue ink)

District	County	Population	Area	Bills		Paragraphs		Total
				Number	Value	Number	Value	
1	Adair	1,234	100	5	100	10	200	100
2	Chilton	2,345	200	12	200	20	400	200
3	Chocoma	3,456	300	18	300	30	600	300
4	Clay	4,567	400	25	400	40	800	400
5	Clarke	5,678	500	30	500	50	1,000	500
6	Crawford	6,789	600	35	600	60	1,200	600
7	Cullman	7,890	700	40	700	70	1,400	700
8	De Kalb	8,901	800	45	800	80	1,600	800
9	Etowah	9,012	900	50	900	90	1,800	900
10	Fayette	10,123	1,000	55	1,000	100	2,000	1,000
11	Franklin	11,234	1,100	60	1,100	110	2,200	1,100
12	Genevieve	12,345	1,200	65	1,200	120	2,400	1,200
13	Greene	13,456	1,300	70	1,300	130	2,600	1,300
14	Hale	14,567	1,400	75	1,400	140	2,800	1,400
15	Hamilton	15,678	1,500	80	1,500	150	3,000	1,500
16	Haskell	16,789	1,600	85	1,600	160	3,200	1,600
17	Hughes	17,890	1,700	90	1,700	170	3,400	1,700
18	Jackson	18,901	1,800	95	1,800	180	3,600	1,800
19	Jasper	19,012	1,900	100	1,900	190	3,800	1,900
20	Jefferson	20,123	2,000	105	2,000	200	4,000	2,000
21	Madison	21,234	2,100	110	2,100	210	4,200	2,100
22	Marion	22,345	2,200	115	2,200	220	4,400	2,200
23	Marshall	23,456	2,300	120	2,300	230	4,600	2,300
24	Meigs	24,567	2,400	125	2,400	240	4,800	2,400
25	Monroe	25,678	2,500	130	2,500	250	5,000	2,500
26	Montgomery	26,789	2,600	135	2,600	260	5,200	2,600
27	Morgan	27,890	2,700	140	2,700	270	5,400	2,700
28	North Baldwin	28,901	2,800	145	2,800	280	5,600	2,800
29	North Etowah	29,012	2,900	150	2,900	290	5,800	2,900
30	North Limestone	30,123	3,000	155	3,000	300	6,000	3,000
31	North Montgomery	31,234	3,100	160	3,100	310	6,200	3,100
32	North Tallapoosa	32,345	3,200	165	3,200	320	6,400	3,200
33	North Wilcox	33,456	3,300	170	3,300	330	6,600	3,300
34	North Yavapai	34,567	3,400	175	3,400	340	6,800	3,400
35	North York	35,678	3,500	180	3,500	350	7,000	3,500
36	Opal	36,789	3,600	185	3,600	360	7,200	3,600
37	Osborne	37,890	3,700	190	3,700	370	7,400	3,700
38	Ozark	38,901	3,800	195	3,800	380	7,600	3,800
39	Perdoo	39,012	3,900	200	3,900	390	7,800	3,900
40	Perry	40,123	4,000	205	4,000	400	8,000	4,000
41	Pike	41,234	4,100	210	4,100	410	8,200	4,100
42	Poinsett	42,345	4,200	215	4,200	420	8,400	4,200
43	Polk	43,456	4,300	220	4,300	430	8,600	4,300
44	Polk	44,567	4,400	225	4,400	440	8,800	4,400
45	Polk	45,678	4,500	230	4,500	450	9,000	4,500
46	Polk	46,789	4,600	235	4,600	460	9,200	4,600
47	Polk	47,890	4,700	240	4,700	470	9,400	4,700
48	Polk	48,901	4,800	245	4,800	480	9,600	4,800
49	Polk	49,012	4,900	250	4,900	490	9,800	4,900
50	Polk	50,123	5,000	255	5,000	500	10,000	5,000

TABLE V—Continued
 SUMMARY OF STATISTICAL DATA RELATING TO BONDS AND OUTSTANDING WARRANTS OF CALIFORNIA
 IRRIGATION DISTRICTS, JANUARY 1, 1931
 (Totals for each district in bold face type)

Name of district	Number of bond issues	Date of bonds	Range of maturities	Coupon rate, per cent	Status of bond issues January 1, 1931												Interest bearing warrants outstanding January 1, 1931
					Face value of all issues voted			Disposition of bonds voted				Disposition of bonds sold			Bond payments due and not paid		
					Original	Refunding	Total	Original issues		Refunding issues exchanged or sold	Unsold, all issues	Refunded	Paid	Outstanding	Principal	Interest ²	
								Canceled	Sold								
Stinson	1	April 1, 1923	Jan. 1, 1931-1950	6	\$360,000	\$360,000	None	360,000	None	None	None	360,000	7,200	\$34,212	\$30,902		
Table Mountain	1 2	July 1, 1923 Mar. 1, 1927	July 1, 1944-1963 Jan. 1, 1948-1967	6 6	125,000 62,000	187,000	None	125,000 62,000	None	None	None	187,000	None	5,550	None		
Terra Bella	1	Nov. 1, 1916	Nov. 1, 1927-1946	6	1,000,000	1,000,000	None	1,000,000	None	None	\$124,500	875,500	2,500	None	None		
Thermalito	1 2	Mar. 1, 1923 May 1, 1926	Jan. 1, 1934-1953 Jan. 1, 1947-1966	6 6	270,000 50,000	320,000	None	270,000 50,000	None	None	None	320,000	None	None	4,094		
Tia Juana River						None											
Tracy-Clover	1	May 1, 1923	Jan. 1, 1939-1963	6	52,170	52,170	None	52,170	None	None	None	52,170	None	None	500		
Tranquillity	1	Jan. 1, 1920	Jan. 1, 1924-1955	5½	260,000	260,000	None	260,000	None	None	10,000	250,000	3,000	13,750	14,345		
Tulare	1				500,000	500,000		500,000			500,000	500,000			None		
Tule	1	July 1, 1921	Jan. 1, 1926-1943	6	806,000	806,000	None	806,000	None	None		806,000	132,000	248,242	No record		
Turlock	Original 1 Ref. 2 3 4 5 6 7 8	July 1, 1902 Jan. 1, 1905 July 1, 1910 Jan. 1, 1911 July 1, 1920 July 1, 1920 July 1, 1920 Jan. 1, 1924 Dec. 31, 1926	Jan. 1, 1922-1942 Jan. 1, 1926-1935 July 1, 1931-1940 Jan. 1, 1932-1941 July 1, 1936-1951 July 1, 1936-1951 July 1, 1941-1960 Jan. 1, 1927-1936 July 1, 1932-1946	5 5 5 5 6 6 5½ 5 5	1,200,000 200,000 100,000 1,206,000 2,570,000 1,028,000 510,000 500,000 600,000	9,114,000		1,200,000 200,000 100,000 1,206,000 2,570,000 1,028,000 510,000 500,000 600,000	\$44,000	\$1,156,000	44,000	1,156,000	984,100	6,929,900	None	None	
Vandalia	1	April 1, 1924	Jan. 1, 1928-1947	6	210,000	210,000	None	210,000	None	None	23,100	186,900	None	None	None		
Vista	1	Jan. 1, 1925	Jan. 1, 1946-1965	6	1,700,000	1,700,000	None	1,700,000	None	None	None	1,700,000	None	None	None		
Waterford	1 2	Oct. 1, 1916 July 1, 1919	Oct. 1, 1927-1946 July 1, 1927-1946	6 5½	465,000 205,000	670,000	None	465,000 205,000	None	None	32,950	637,050	None	None	11,500		
West Side	1 2 3 4	Jan. 1, 1917 July 1, 1918 Jan. 1, 1920 Feb. 1, 1929	Jan. 1, 1938-1957 July 1, 1939-1958 Jan. 1, 1930-1936 Jan. 1, 1950-1969	6 6 6 6	295,000 100,000 150,000 50,000	595,000	None	295,000 100,000 150,000 13,500	36,500	None	30,000	528,500	None	None	48,562		
West Stanislaus	1	July 1, 1927	July 1, 1932-1957	6	1,216,376	1,216,376	None	1,175,000	41,376	41,376		1,175,000	None	None	25,000		
Williams	1 2 1st Div. Ref. 2d Div. 3	July 1, 1921 Jan. 1, 1924 Jan. 1, 1924 June 1, 1924	Jan. 1, 1923-1937 Jan. 1, 1942-1959 Jan. 1, 1959-1961 Jan. 1, 1945-1961	6 6 6 6	600,000 115,000 17,000	1,198,000	None	453,000 115,000 17,000	234,000	379,000	379,000	568,000	29,000	150,180	41,598		

TABLE 1
 SUMMARY OF STATISTICS
 DATA RELATIVE TO THE
 FEDERAL BUREAU OF INVESTIGATION
 FOR THE YEAR 1964

Category	Total		Domestic		Foreign		Total	Domestic	Foreign
	Number	Percentage	Number	Percentage	Number	Percentage			
1. Total	100,000	100.0	80,000	80.0	20,000	20.0	100,000	80,000	20,000
2. Domestic	80,000	80.0	60,000	75.0	20,000	25.0	80,000	60,000	20,000
3. Foreign	20,000	20.0	20,000	100.0	0	0.0	20,000	0	20,000
4. Total	100,000	100.0	80,000	80.0	20,000	20.0	100,000	80,000	20,000

The following table shows the distribution of cases by type of case and by geographic area. The data are based on the information available in the files of the Bureau and the field offices as of the end of the reporting period.

STATE OF CALIFORNIA - DEPARTMENT OF AGRICULTURE

LIST OF REGISTERED LANDS

Section	Tract	Acres	Owner	Registered	Assessed	Value	County	Block	Lot	Area	Value	County	Block	Lot	Area	Value	County	Block	Lot	Area	Value
000100	000100	1.00	John Doe	12345	12345	1000	San Diego	100	100	1.00	1000	San Diego	100	100	1.00	1000	San Diego	100	100	1.00	1000
000101	000101	1.00	John Doe	12345	12345	1000	San Diego	100	100	1.00	1000	San Diego	100	100	1.00	1000	San Diego	100	100	1.00	1000
000102	000102	1.00	John Doe	12345	12345	1000	San Diego	100	100	1.00	1000	San Diego	100	100	1.00	1000	San Diego	100	100	1.00	1000
000103	000103	1.00	John Doe	12345	12345	1000	San Diego	100	100	1.00	1000	San Diego	100	100	1.00	1000	San Diego	100	100	1.00	1000
000104	000104	1.00	John Doe	12345	12345	1000	San Diego	100	100	1.00	1000	San Diego	100	100	1.00	1000	San Diego	100	100	1.00	1000
000105	000105	1.00	John Doe	12345	12345	1000	San Diego	100	100	1.00	1000	San Diego	100	100	1.00	1000	San Diego	100	100	1.00	1000
000106	000106	1.00	John Doe	12345	12345	1000	San Diego	100	100	1.00	1000	San Diego	100	100	1.00	1000	San Diego	100	100	1.00	1000
000107	000107	1.00	John Doe	12345	12345	1000	San Diego	100	100	1.00	1000	San Diego	100	100	1.00	1000	San Diego	100	100	1.00	1000
000108	000108	1.00	John Doe	12345	12345	1000	San Diego	100	100	1.00	1000	San Diego	100	100	1.00	1000	San Diego	100	100	1.00	1000
000109	000109	1.00	John Doe	12345	12345	1000	San Diego	100	100	1.00	1000	San Diego	100	100	1.00	1000	San Diego	100	100	1.00	1000
000110	000110	1.00	John Doe	12345	12345	1000	San Diego	100	100	1.00	1000	San Diego	100	100	1.00	1000	San Diego	100	100	1.00	1000

TABLE VI—Continued

ANNUAL OBLIGATIONS OF CALIFORNIA IRRIGATION DISTRICTS, FROM 1931-1950 ON BONDS OUTSTANDING AFTER JANUARY 1, 1931, AND ALSO FACE VALUE OF BONDS MATURING SERIALLY AFTER 1950

(Totals for each district in bold face type)

Name of district	Number of bond issues	Total bonds outstanding January 1, 1931	Interest rate, per cent	Date on which annual payments are due	Payments in 1931 after January 1	Payments due annually from 1932 to 1950																	Total bonds outstanding present issue, December 31, 1950				
						1932	1933	1934	1935	1936	1937	1938	1939	1940	1941	1942	1943	1944	1945	1946	1947	1948		1949	1950		
Carmichael	2	\$96,600	6	July 1																							
	1	66,600	6	July 1	\$4,500	\$4,500	\$4,500	\$4,500	\$5,400	\$5,400	\$5,400	\$5,400	\$5,400	\$6,300	\$6,300	\$7,200	\$7,200	7,500	7,500	7,500							
	2	30,000	6	Jan. 1			500	500	500	500	500	1,000	1,000	1,000	1,000	1,000	7,500	7,500	7,500								
					Principal	\$4,500	\$4,500	\$5,000	\$5,000	\$5,900	\$5,900	\$5,900	\$5,900	\$6,400	\$6,400	\$7,300	\$7,300	\$8,200	\$8,200	\$7,500	\$7,500	\$7,500					
					Interest	2,898	5,391	5,091	4,791	4,464	4,110	3,756	3,372	2,961	2,523	2,058	1,566	900	450	450							
					Total due	\$7,398	\$9,891	\$10,091	\$9,791	\$10,364	\$10,010	\$9,656	\$9,772	\$10,261	\$9,823	\$10,258	\$9,766	\$8,400	\$7,950	\$7,950							
Carpenter	1	\$200,000	6	July 1																					\$46,000		
					Principal			\$4,000	\$4,000	\$6,000	\$6,000	\$8,000	\$8,000	\$8,000	\$8,000	\$10,000	\$10,000	\$10,000	\$10,000	\$12,000	\$12,000	\$12,000	\$12,000	\$12,000	\$14,000		
					Interest	\$6,000	\$12,000	\$12,000	11,880	11,640	11,340	10,980	10,560	10,080	9,600	9,120	8,580	7,980	7,380	6,780	6,120	5,400	4,680	3,960	3,180		
					Total due	\$6,000	\$12,000	\$12,000	\$15,880	\$15,640	\$17,340	\$16,980	\$18,560	\$18,080	\$17,600	\$17,120	\$18,580	\$17,980	\$17,380	\$16,780	\$18,120	\$17,400	\$16,680	\$15,960	\$17,180		
Citrus Heights	1	\$183,000	6	July 1																							
					Principal	\$10,000	\$10,000	\$11,000	\$12,000	\$12,000	\$13,000	\$14,000	\$15,000	\$16,000	\$17,000	\$18,000	\$19,000	\$16,000									
					Interest	5,490	10,080	9,490	8,760	8,040	7,290	6,480	5,610	4,680	3,690	2,640	1,530	480									
					Total due	\$15,490	\$20,080	\$20,490	\$20,760	\$20,040	\$20,290	\$20,480	\$20,610	\$20,680	\$20,690	\$20,640	\$20,530	\$16,480									
Compton-Delevan	2	\$384,000	6	Jan. 1																							
	1	111,000	6	Jan. 1	\$8,000	\$15,000	\$15,000	\$29,000	\$15,000	\$35,000	\$9,000	\$19,000	\$20,000	\$21,000	\$23,000	\$24,000	\$25,000	\$22,000	\$25,000	\$18,000	\$21,000	\$14,000	\$19,000	\$12,000	\$10,000		
	1 Ref.	273,000	6	Jan. 1																							
					Principal	\$8,000	\$15,000	\$29,000	\$15,000	\$35,000	\$9,000	\$19,000	\$20,000	\$21,000	\$23,000	\$24,000	\$25,000	\$22,000	\$25,000	\$18,000	\$21,000	\$14,000	\$19,000	\$12,000	\$10,000		
					Interest	11,520	21,660	19,920	19,020	16,920	16,380	15,240	14,040	12,780	11,400	9,960	8,460	7,140	5,640	4,560	3,300	2,460	1,320	600	600	600	
					Total due	\$19,520	\$36,660	\$48,920	\$34,020	\$51,920	\$25,380	\$34,240	\$34,040	\$33,780	\$34,400	\$33,960	\$33,460	\$29,140	\$30,640	\$22,560	\$24,300	\$16,460	\$20,320	\$12,600	\$10,600		
Consolidated	2	\$235,000	5 1/2	Jan. 1																							
	1	215,000	5 1/2	Jan. 1		\$105,000	\$110,000																				
	2	20,000	5 1/2	Jan. 1		10,000	10,000																				
					Principal		\$115,000	\$120,000																			
					Interest	\$6,463	6,600	6,600																			
					Total due	\$6,463	\$121,600	\$126,600																			
Corcoran	1	\$750,000	6	Jan. 1																					\$260,000		
					Principal		\$10,000	\$10,000	\$10,000	\$10,000	\$20,000	\$20,000	\$20,000	\$20,000	\$20,000	\$30,000	\$30,000	\$30,000	\$30,000	\$30,000	\$40,000	\$40,000	\$40,000	\$40,000	\$40,000		
					Interest	\$22,500	44,400	43,800	43,200	42,600	41,400	40,200	39,000	37,800	36,600	34,800	33,000	31,200	29,400	27,600	25,200	22,800	20,400	18,000	15,600		
					Total due	\$22,500	\$54,400	\$53,800	\$53,200	\$52,600	\$61,400	\$60,200	\$59,000	\$57,800	\$56,600	\$64,800	\$63,000	\$61,200	\$59,400	\$57,600	\$65,200	\$62,800	\$60,400	\$58,000	\$55,600		
Cordua	3	\$258,000	6	July 1																							
	1	120,000	6	July 1	\$12,000	\$12,000	\$12,000	\$12,000	\$12,000	\$12,000	\$12,000	\$12,000	\$12,000	\$12,000	\$12,000	\$17,000	\$17,000	\$17,000	\$17,000	\$17,000	\$17,000	\$17,000	\$17,000	\$1,000			
	2	35,000	6	July 1	5,000	5,000	5,000	5,000	5,000	5,000	5,000	5,000	5,000	5,000													
	3 Ref.	103,000	6	July 1																							
					Principal	\$17,000	\$17,000	\$17,000	\$17,000	\$17,000	\$17,000	\$17,000	\$17,000	\$17,000	\$17,000	\$17,000	\$17,000	\$17,000	\$17,000	\$17,000	\$17,000	\$17,000	\$1,000	\$1,000	\$1,000		
					Interest	7,740	13,950	12,930	11,910	10,890	9,870	8,850	7,980	7,260	6,540	5,678	4,650	3,630	2,610	1,590	570	30	30				
					Total due	\$24,740	\$30,950	\$29,930	\$28,910	\$27,890	\$26,870	\$25,850	\$19,980	\$19,260	\$18,540	\$22,678	\$21,650	\$20,630	\$19,610	\$18,590	\$17,570	\$1,030					
Deer Creek	1	\$20,000	6	July 1																							
					Principal	\$2,500	\$2,500	\$2,500	\$2,500	\$2,500	\$2,500	\$2,500	\$2,500	\$2,500	\$2,500												
					Interest	600	975	825	675	525	375	225	75														
					Total due	\$3,100	\$3,475	\$3,325	\$3,175	\$3,025	\$2,875	\$2,725	\$2,575														
East Contra Costa	3	\$1,236,000	6	Jan. 1																					\$154,200		
Brentwood	1	514,000	6	Jan. 1					\$10,280	\$10,280	\$15,420	\$15,420	\$20,560	\$20,560	\$20,560	\$20,560	\$25,700	\$25,700	\$25,700	\$25,700	\$30,840	\$30,840	\$30,840	\$30,840	154,200		
Knightsen	1	585,000	6	July 1	\$26,000	\$26,000	\$26,000	\$26,000	\$32,000	\$32,000	\$33,000	\$33,000	\$39,000	\$39,000	\$39,000	\$39,000	\$45,000	\$46,000	\$52,000	\$52,000	\$52,000	\$52,000	\$52,000	\$52,000			
Lone Tree	1	137,000	6	Jan. 1																							
					Principal	\$26,000	\$26,000	\$31,000	\$32,000	\$49,280	\$50,280	\$56,420	\$56,420	\$67,560	\$68,560	\$69,560	\$80,700	\$82,700	\$88,700	\$90,700	\$93,840	\$93,840	\$93,840	\$93,840	\$93,840		
					Interest	37,080	71,820	69,960	68,040	65,263	62,246	58,891	55,506	51,632	47,519	43,345	38,172	34,510	29,578	24,436	18,994	15,583	12,953	11,102	9,252		
					Total due	\$63,080	\$97,820	\$100,960	\$100,040	\$114,543	\$112,526	\$115,311	\$111,926	\$119,192	\$116,079	\$112,905	\$108,732	\$115,210	\$112,278	\$113,136	\$109,694	\$59,423	\$43,793	\$41,942	\$40,092		

TABLE VI—Continued

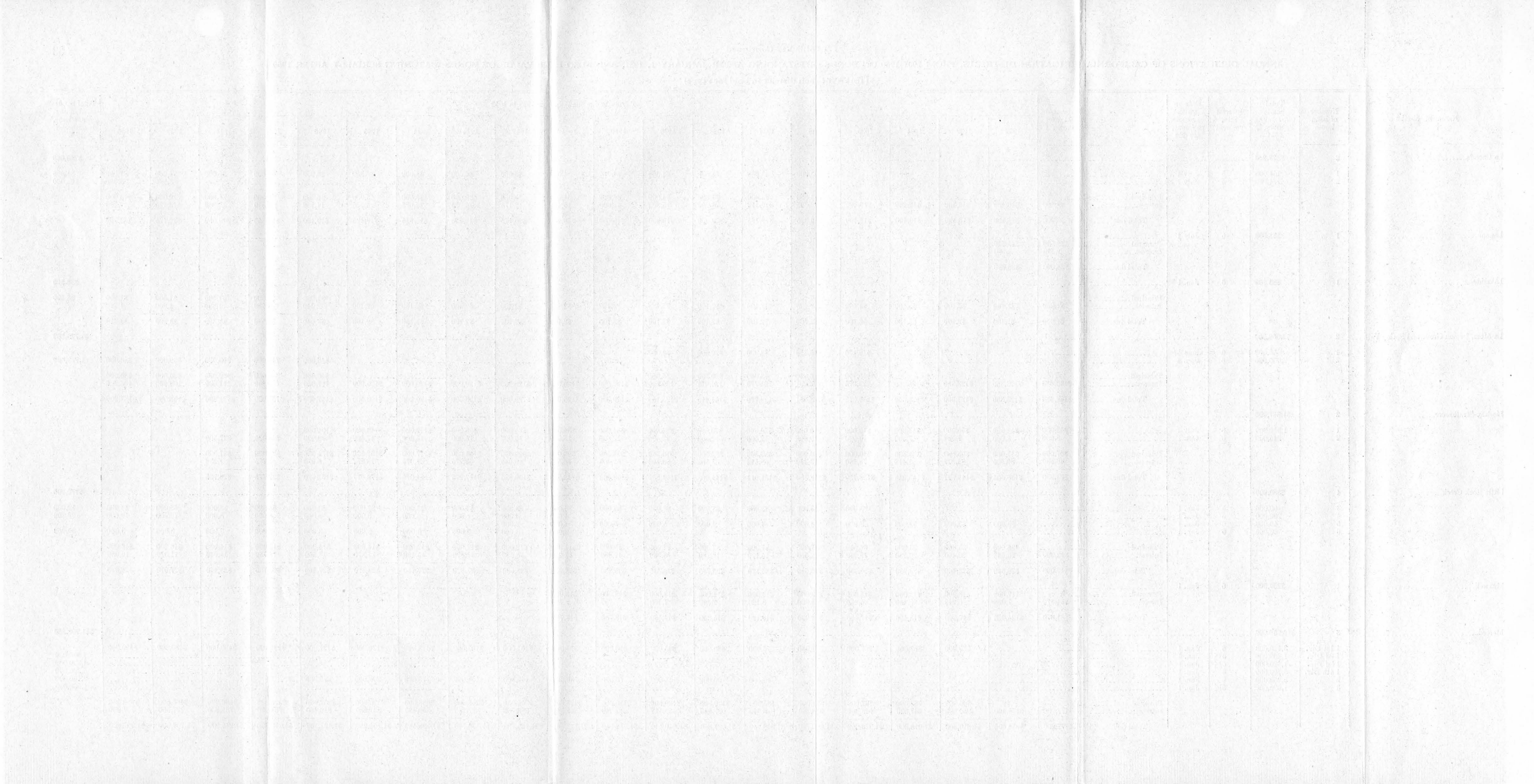
ANNUAL OBLIGATIONS OF CALIFORNIA IRRIGATION DISTRICTS, FROM 1931-1950 ON BONDS OUTSTANDING AFTER JANUARY 1, 1931, AND ALSO FACE VALUE OF BONDS MATURING SERIALLY AFTER 1950

(Totals for each district in bold face type)

Name of district	Number of bond issues	Total bonds outstanding January 1, 1931	Interest rate, per cent	Date on which annual payments are due	Payments in 1931 after January 1	Payments due annually from 1932 to 1950																	Total bonds outstanding present issue, December 31, 1950				
						1932	1933	1934	1935	1936	1937	1938	1939	1940	1941	1942	1943	1944	1945	1946	1947	1948		1949	1950		
El Camino	1	\$423,000	6	Jan. 1																					\$179,000		
					Principal																				179,000		
					Interest	\$26,380	\$25,380	\$25,380	\$25,380	\$25,380	\$25,380	\$25,380	\$11,000	\$12,000	\$13,000	\$14,000	\$15,000	\$16,000	\$16,000	\$17,000	\$19,000	\$20,000	\$21,000	\$22,000	\$23,000	\$25,000	
					Total due	\$26,380	\$25,380	\$25,380	\$25,380	\$25,380	\$25,380	\$35,720	\$36,000	\$36,220	\$36,380	\$36,480	\$36,520	\$35,560	\$35,540	\$36,400	\$36,200	\$35,940	\$35,620	\$35,240	\$35,740		
El Dorado	1	\$688,000	6	Jan. 1																					\$621,000		
					Principal																				621,000		
					Interest	\$20,640	\$41,280	\$41,280	\$41,280	\$41,280	\$41,280	\$41,280	\$41,280	\$41,280	\$41,280	\$41,280	\$41,280	\$41,280	\$41,280	\$41,280	\$41,280	\$41,280	\$41,280	\$41,280	\$20,000	\$20,000	\$27,000
					Total due	\$20,640	\$41,280	\$41,280	\$41,280	\$41,280	\$41,280	\$41,280	\$41,280	\$41,280	\$41,280	\$41,280	\$41,280	\$41,280	\$41,280	\$41,280	\$41,280	\$41,280	\$41,280	\$41,280	\$60,080	\$58,880	\$64,260
Fairoaks	1	\$116,000	6	July 1																							
					Principal	\$8,000	\$10,000	\$10,000	\$10,000	\$10,000	\$12,000	\$12,000	\$12,000	\$12,000	\$14,000	\$6,000											
					Interest	3,480	6,180	5,580	4,980	4,380	3,720	3,000	2,280	1,560	780	180											
					Total due	\$11,480	\$16,180	\$15,580	\$14,980	\$14,380	\$15,720	\$15,000	\$14,280	\$13,560	\$14,780	\$6,180											
Fresno	2	\$255,000																									
	1	222,000	6	Jan. 1																							
	2	33,000	6	Jan. 1																							
					Principal		\$222,000																				
					Interest	\$7,650	\$255,000																				
					Total due	\$7,650	\$270,300																				
Glenn-Colusa	2	\$1,551,500																									
	1	1,266,500	6	Jan. 1																							
	1 Ref.	285,000	6	Jan. 1																							
					Principal		\$113,350	\$120,350	\$128,350	\$129,350	\$129,350	\$129,350	\$129,350	\$129,350	\$128,350	\$129,350											
					Interest	\$46,545	\$113,350	\$120,350	\$128,350	\$136,350	\$144,350	\$153,350	\$161,350	\$170,350	\$183,350	\$240,350											
					Total due	\$46,545	\$199,639	\$199,418	\$199,717	\$199,536	\$198,875	\$198,674	\$196,993	\$195,772	\$197,771	\$254,771											
Grenada	1	\$240,000	6	July 1																							
					Principal	\$96,000	\$16,000	\$16,000	\$16,000	\$16,000	\$16,000	\$16,000	\$16,000	\$16,000	\$16,000	\$16,000											
					Interest	71,120	8,160	7,200	6,240	5,280	4,320	3,360	2,400	1,440	480												
					Total due	\$167,120	\$24,160	\$23,200	\$22,240	\$21,280	\$20,320	\$19,360	\$18,400	\$17,440	\$16,480												
Hot-Spring Valley	2	\$91,000																									
	1	40,000	6	Jan. 1																							
	2	51,000	6	Jan. 1																							
					Principal	\$11,000	\$11,000	\$12,000	\$12,000	\$13,000	\$13,000	\$10,000	\$10,000	\$10,000													
					Interest	2,730	4,800	4,080	3,360	2,580	1,800	1,200	600	600													
					Total due	\$13,730	\$15,800	\$16,080	\$15,360	\$15,580	\$14,800	\$11,200	\$10,600	\$10,600													
Imperial	4	\$14,850,000																							\$4,562,000		
	1	3,500,000	5	Jan. 1						\$70,000	\$70,000	\$105,000	\$105,000	\$140,000	\$140,000	\$140,000	\$140,000	\$175,000	\$175,000	\$175,000	\$175,000	\$210,000	\$210,000	\$210,000	1,260,000		
	2	2,500,000	5	July 1								50,000	50,000	75,000	75,000	100,000	100,000	100,000	100,000	125,000	125,000	125,000	150,000	150,000	1,200,000		
	3	1,350,000	5 1/2	July 1																							
	4	7,500,000	6	July 1																							
					Principal	\$300,000	\$300,000	\$350,000	\$400,000	\$422,000	\$377,000	\$396,000	\$313,000	\$327,000	\$279,000	\$292,000	\$292,000	\$320,000	\$304,000	\$334,000	\$333,000	\$373,000	\$383,000	\$333,000	\$333,000	2,102,000	
					Interest	412,125	799,500	781,625	761,000	737,340	709,870	683,180	655,410	628,460	600,155	572,275	532,000	543,380	513,020	480,550	447,660	413,275	377,095	337,665	299,435	262,470	
					Total due	\$712,125	\$1,099,500	\$1,131,625	\$1,161,000	\$1,159,340	\$1,156,870	\$1,149,180	\$1,123,410	\$1,110,460	\$1,094,155	\$1,079,275	\$1,075,380	\$1,073,020	\$1,059,550	\$1,056,660	\$1,046,275	\$1,050,095	\$1,055,665	\$967,435	\$942,470		
Jacinto	1	\$168,000	6	Jan. 1																							
					Principal		\$11,000	\$12,000	\$13,000	\$14,000	\$14,000	\$15,000	\$16,000	\$17,000	\$18,000	\$19,000	\$19,000										
					Interest	\$5,040	9,420	8,700	7,920	7,080	6,240	5,340	4,380	3,360	2,280	1,140	1,140										
					Total due	\$5,040	\$20,420	\$20,700	\$20,920	\$21,080	\$20,240	\$20,340	\$20,380	\$20,360	\$20,280	\$20,140	\$20,140										
James	1	\$995,000	6	Jan. 1																							
					Principal	\$195,000	\$50,000	\$50,000	\$50,000	\$50,000	\$50,000	\$50,000	\$50,000	\$50,000	\$50,000	\$50,000	\$50,000	\$50,000	\$50,000	\$50,000	\$50,000	\$50,000	\$50,000	\$50,000	\$50,000		
					Interest	303,240	45,000	42,000	39,000	36,000	33,000	30,000	27,000	24,000	21,000	18,000	15,000	12,000	9,000	6,000	3,000	3,000					
					Total due	\$498,240	\$95,000	\$92,000	\$89,000	\$86,000	\$83,000	\$80,000	\$77,000	\$74,000	\$71,000	\$68,000	\$65,000	\$62,000	\$59,000	\$56,000	\$53,000	\$53,000					

TABLE VI—Continued
 ANNUAL OBLIGATIONS OF CALIFORNIA IRRIGATION DISTRICTS, FROM 1931-1950 ON BONDS OUTSTANDING AFTER JANUARY 1, 1931, AND ALSO FACE VALUE OF BONDS MATURING SERIALLY AFTER 1950
 (Totals for each district in bold face type)

Name of district	Number of bond issues	Total bonds outstanding January 1, 1931	Interest rate, per cent	Date on which annual payments are due	Payments in 1931 after January 1	Payments due annually from 1932 to 1950															Total bonds outstanding present issue, December 31, 1950				
						1932	1933	1934	1935	1936	1937	1938	1939	1940	1941	1942	1943	1944	1945	1946		1947	1948	1949	1950
La Canada	2	\$328,000																						\$249,000	
	1	154,000	5	July 1						\$3,000	\$3,000	\$4,000	\$4,000	\$4,000	\$4,000	\$5,000	\$5,000	\$5,000	\$5,000	\$6,000	\$6,000	\$6,000	\$6,000	\$1,000	
	2	174,000	5	July 1																				\$168,000	
					Principal					\$3,000	\$3,000	\$4,000	\$4,000	\$4,000	\$4,000	\$5,000	\$5,000	\$5,000	\$5,000	\$6,000	\$6,000	\$6,000	\$9,000		
					Interest	\$8,200	\$16,400	\$16,400	\$16,400	\$16,400	16,325	16,175	16,000	15,800	15,600	15,400	15,175	14,925	14,675	14,425	14,150	13,850	13,550	\$10,000	
					Total due	\$8,200	\$16,400	\$16,400	\$16,400	\$16,400	\$19,325	\$18,175	\$20,000	\$19,800	\$19,600	\$19,400	\$20,175	\$19,925	\$18,675	\$19,425	\$20,150	\$19,850	\$19,550	\$22,175	\$22,700
Laguna	1	\$53,000	6	July 1																					
					Principal	\$26,500	\$26,500																		
					Interest	1,590	1,590																		
					Total due	\$28,090	\$28,090																		
Lakeside	1	\$35,000	6	Jan. 1																				\$28,500	
					Principal															\$1,000	\$1,000	\$1,500	\$1,500	\$1,500	
					Interest	\$1,050	\$2,100	\$2,100	\$2,100	\$2,100	\$2,100	\$2,100	\$2,100	\$2,100	\$2,100	\$2,100	\$2,100	\$2,100	\$2,100	2,040	1,980	1,890	1,800	\$1,710	
					Total due	\$1,050	\$2,100	\$2,100	\$2,100	\$2,100	\$2,100	\$2,100	\$2,100	\$2,100	\$2,100	\$2,100	\$2,100	\$2,100	\$2,100	\$3,040	\$2,980	\$3,390	\$3,300	\$3,210	
La Mesa, Lemon Grove and Spring Valley	2	\$2,056,000																						\$1,720,000	
	1	56,000	6	June 30																					
	2	2,000,000	6	Jan. 1						\$16,150	\$6,350	\$8,000	\$20,500	\$5,000							\$40,000	\$40,000	\$60,000	\$60,000	\$80,000
					Principal					\$16,150	\$6,350	\$8,000	\$20,500	\$5,000							\$40,000	\$40,000	\$60,000	\$60,000	\$80,000
					Interest	\$143,688	\$123,360	\$123,360	\$123,360	\$123,360	122,875	122,201	121,770	120,915	120,150	\$120,000	\$120,000	\$120,000	\$120,000	\$120,000	\$117,600	\$115,200	\$111,600	\$108,000	\$103,200
					Total due	\$143,688	\$123,360	\$123,360	\$123,360	\$139,025	\$128,551	\$129,770	\$141,415	\$125,150	\$120,000	\$120,000	\$120,000	\$120,000	\$120,000	\$157,600	\$155,200	\$171,600	\$168,000	\$183,200	
Lindsay-Strathmore	2	\$1,561,000																							
	1	1,316,000	6	July 1		\$42,000	\$42,000	\$56,000	\$56,000	\$70,000	\$70,000	\$70,000	\$70,000	\$84,000	\$84,000	\$84,000	\$84,000	\$98,000	\$112,000	\$140,000	\$154,000	\$25,000	\$27,500		
	2	245,000	6	Oct. 1		5,000	5,000	7,500	7,500	10,000	10,000	12,500	12,500	12,500	15,000	15,000	15,000	15,000	17,500	20,000	20,000	25,000	\$27,500		
					Principal	\$47,000	\$47,000	\$63,500	\$63,500	\$80,500	\$80,500	\$82,500	\$82,500	\$96,500	\$96,500	\$99,000	\$99,000	\$113,000	\$127,000	\$157,500	\$174,000	\$25,000	\$27,500		
					Interest	46,830	49,505	63,227	63,418	78,150	78,350	82,512	83,563	88,192	92,403	96,575	99,635	113,275	127,075	157,500	174,000	25,000	27,500		
					Total due	\$93,830	\$136,505	\$149,727	\$145,918	\$158,650	\$158,850	\$165,022	\$166,073	\$184,692	\$178,903	\$195,575	\$198,635	\$216,275	\$226,075	\$274,500	\$298,000	\$50,000	\$55,000		
Little Rock Creek	4	\$360,000																						\$170,000	
	3	60,000	5	Jan. 1						\$3,000	\$3,000	\$3,000	\$3,000	\$3,000	\$3,000	\$3,000	\$3,000	\$3,000	\$3,000	\$3,000	\$3,000	\$3,000	\$3,000	\$12,000	
	4	200,000	6	Jan. 1																				\$128,000	
	5	40,000	6	Jan. 1		\$6,000	\$3,000	\$3,000	3,000	4,000	4,000	4,000	5,000	5,000	1,000	2,000	3,000	3,000	3,000	3,000	3,000	3,000	3,000	\$30,000	
	6	60,000	6	Jan. 1																					
					Principal	\$42,000	\$6,000	\$3,000	\$3,000	\$6,000	\$7,000	\$7,000	\$7,000	\$8,000	\$8,000	\$11,000	\$12,000	\$14,000	\$14,000	\$14,000	\$14,000	\$16,000	\$16,000		
					Interest		20,640	20,460	20,280	19,950	19,560	19,170	18,780	18,330	17,980	17,250	16,680	15,870	15,180	14,370	13,560	12,750	11,940	\$10,080	
					Total due	\$42,000	\$26,640	\$23,460	\$23,280	\$25,950	\$26,560	\$26,170	\$25,780	\$26,330	\$25,980	\$28,250	\$28,680	\$27,870	\$27,180	\$28,370	\$27,560	\$26,750	\$25,940	\$27,010	\$26,080
Maxwell	1	\$234,000	6	Jan. 1																					
					Principal	\$81,870	\$117,020	\$13,000	\$13,000	\$13,000	\$13,000	\$13,000	\$13,000	\$13,000	\$13,000	\$13,000	\$13,000	\$13,000	\$13,000	\$13,000	\$13,000	\$13,000	\$13,000	\$13,000	
					Interest		7,020	6,240	5,460	4,680	3,900	3,120	2,340	1,560	780	780									
					Total due	\$81,870	\$124,020	\$19,240	\$18,460	\$17,680	\$16,900	\$16,120	\$15,340	\$14,560	\$13,780	\$13,780									
Merced	3	\$16,250,000																						\$11,980,000	
	1 1st Div.	3,120,000	6	Jan. 1					\$60,000	\$63,000	\$67,000	\$71,000	\$75,000	\$80,000	\$85,000	\$90,000	\$95,000	\$101,000	\$107,000	\$113,000	\$120,000	\$127,000	\$426,000	\$480,000	
	1 2d Div.	1,800,000	5½	Jan. 1																					
	1 3d Div.	1,320,000	5½	Jan. 1																					
	1 4th Div.	5,760,000	6	Jan. 1																					
	2	3,250,000	6	Jan. 1						10,000	20,000	35,000	50,000	130,000	145,000	160,000	175,000	200,000	225,000						
	3	1,000,000	5½	Jan. 1																					
					Principal	\$477,200	\$954,400	\$60,000	\$63,000	\$67,000	\$71,000	\$85,000	\$100,000	\$120,000	\$140,000	\$225,000	\$246,000	\$267,000	\$288,000	\$320,000	\$352,000	\$426,000	\$480,000	\$480,000	
					Interest			950,800	947,020	943,000	938,740	933,640	927,940	920,440	912,040	898,940	883,780	867,760	850,480	831,280	810,160	784,600	755,800	\$727,000	
					Total due	\$477,200	\$954,400	\$1,010,800	\$1,010,020	\$1,010,000	\$1,009,740	\$1,018,640	\$1,027,940	\$1,040,440	\$1,052,040	\$1,123,940	\$1,129,780	\$1,134,760	\$1,138,480	\$1,151,280	\$1,162,160	\$1,210,600	\$1,235,800	\$1,207,000	



Year	Area (Acres)	Value	Remarks
1870	1,200	\$120,000	
1871	1,300	\$130,000	
1872	1,400	\$140,000	
1873	1,500	\$150,000	
1874	1,600	\$160,000	
1875	1,700	\$170,000	
1876	1,800	\$180,000	
1877	1,900	\$190,000	
1878	2,000	\$200,000	
1879	2,100	\$210,000	
1880	2,200	\$220,000	

Total

Year	Area (Acres)	Value	Remarks
1870	1,200	\$120,000	
1871	1,300	\$130,000	
1872	1,400	\$140,000	
1873	1,500	\$150,000	
1874	1,600	\$160,000	
1875	1,700	\$170,000	
1876	1,800	\$180,000	
1877	1,900	\$190,000	
1878	2,000	\$200,000	
1879	2,100	\$210,000	
1880	2,200	\$220,000	

Year	Area (Acres)	Value	Remarks
1870	1,200	\$120,000	
1871	1,300	\$130,000	
1872	1,400	\$140,000	
1873	1,500	\$150,000	
1874	1,600	\$160,000	
1875	1,700	\$170,000	
1876	1,800	\$180,000	
1877	1,900	\$190,000	
1878	2,000	\$200,000	
1879	2,100	\$210,000	
1880	2,200	\$220,000	

Year	Area (Acres)	Value	Remarks
1870	1,200	\$120,000	
1871	1,300	\$130,000	
1872	1,400	\$140,000	
1873	1,500	\$150,000	
1874	1,600	\$160,000	
1875	1,700	\$170,000	
1876	1,800	\$180,000	
1877	1,900	\$190,000	
1878	2,000	\$200,000	
1879	2,100	\$210,000	
1880	2,200	\$220,000	

Total

ANNUAL OBLIGATIONS OF CALIFORNIA IRRIGATION DISTRICTS, FROM 1931-1950 ON BONDS OUTSTANDING AFTER JANUARY 1, 1931, AND ALSO FACE VALUE OF BONDS MATURING SERIALLY AFTER 1950

(Totals for each district in bold face type)

Name of district	Number of bond issues	Total bonds outstanding January 1, 1931	Interest rate, per cent	Date on which payments are due	Payments in 1931 after January 1	Payments due annually from 1932 to 1950																		Total bonds outstanding present issue, December 31, 1950				
						1932	1933	1934	1935	1936	1937	1938	1939	1940	1941	1942	1943	1944	1945	1946	1947	1948	1949		1950			
San Diegoito	1	\$389,000	6	Jan. 1	Principal	\$11,000	\$12,000	\$13,000	\$14,000	\$14,000	\$15,000	\$16,000	\$17,000	\$18,000	\$19,000	\$21,000	\$22,000	\$23,000	\$25,000	\$26,000	\$28,000	\$30,000	\$32,000	\$33,000				
						Interest	\$11,670	22,680	21,960	21,180	20,340	19,500	18,600	17,640	16,620	15,540	14,400	13,140	11,820	10,440	8,940	7,380	5,700	3,900	1,980	1,980		
						Total due	\$11,670	\$33,680	\$33,960	\$34,180	\$34,340	\$33,500	\$33,600	\$33,640	\$33,620	\$33,540	\$33,400	\$34,140	\$33,820	\$33,440	\$33,940	\$33,380	\$33,700	\$33,900	\$33,980	\$33,980	\$34,980	
Santa Fe	1	\$700,000	6	July 1	Principal	\$21,000	\$19,000	\$20,000	\$20,000	\$23,000	\$24,000	\$26,000	\$27,000	\$29,000	\$30,000	\$32,000	\$34,000	\$36,000	\$39,000	\$40,000	\$43,000	\$46,000	\$49,000	\$51,000				
						Interest	\$21,000	\$42,000	\$41,430	\$40,260	\$39,060	\$37,770	\$36,360	\$34,860	\$33,270	\$31,590	\$29,820	\$27,960	\$25,980	\$23,880	\$21,630	\$19,260	\$16,770	\$14,100	\$11,250	\$8,250		
						Total due	\$21,000	\$42,000	\$60,430	\$60,260	\$59,060	\$60,770	\$60,360	\$60,860	\$60,270	\$60,590	\$59,820	\$59,960	\$59,580	\$59,880	\$60,630	\$59,250	\$59,770	\$60,100	\$60,250	\$59,250	\$59,250	
San Ysidro	1	\$25,000	5	Jan. 1	Principal	\$625	\$1,250	\$1,250	\$1,250	\$1,500	\$1,750	\$2,000	\$2,250	\$2,500	\$2,750	\$3,250	\$3,750	\$4,000										
						Interest	\$625	\$1,250	\$1,250	\$1,187	\$1,113	\$1,025	\$925	\$813	\$687	\$550	\$387	\$200	\$200									
						Total due	\$625	\$1,250	\$1,250	\$2,437	\$2,613	\$2,775	\$2,925	\$3,063	\$3,187	\$3,300	\$3,637	\$3,950	\$4,200									
Scott Valley	1	\$69,000	6	July 1	Principal	\$9,000	\$10,000	\$10,000	\$10,000	\$10,000	\$10,000	\$10,000	\$10,000															
						Interest	\$2,070	\$3,300	\$2,700	\$2,100	\$1,500	\$900	\$300															
						Total due	\$11,070	\$13,300	\$12,700	\$12,100	\$11,500	\$10,900	\$10,300															
Serrano	1	\$200,000	6	July 1	Principal			\$4,000	\$4,000	\$6,000	\$6,000	\$8,000	\$8,000	\$8,000	\$8,000	\$10,000	\$10,000	\$10,000	\$10,000	\$12,000	\$12,000	\$12,000	\$12,000	\$14,000				
						Interest	\$6,000	\$12,000	\$12,000	\$11,880	\$11,640	\$11,340	\$10,980	\$10,560	\$10,080	\$9,600	\$9,120	\$8,580	\$7,980	\$7,380	\$6,780	\$6,120	\$5,400	\$4,680	\$3,960	\$3,180		
						Total due	\$6,000	\$12,000	\$12,000	\$15,880	\$15,640	\$17,340	\$16,980	\$18,560	\$18,080	\$17,600	\$17,120	\$18,580	\$17,980	\$17,380	\$16,780	\$18,120	\$17,400	\$16,680	\$15,960	\$17,180		
South Montebello	1	\$87,500	6	Jan. 1	Principal	\$6,000	\$6,500	\$6,000	\$6,500	\$6,000	\$6,500	\$6,000	\$6,500	\$6,000	\$6,500	\$6,000	\$6,500	\$6,000	\$6,500									
						Interest	\$2,625	\$4,890	\$4,500	\$4,140	\$3,750	\$3,390	\$3,000	\$2,640	\$2,250	\$1,890	\$1,500	\$1,140	\$750	\$390	\$390							
						Total due	\$2,625	\$10,890	\$11,000	\$10,140	\$10,250	\$9,890	\$9,500	\$8,640	\$8,750	\$7,890	\$8,000	\$7,140	\$7,250	\$6,890								
South San Joaquin	6	\$5,940,000	5	July 1	Principal	\$93,750	\$112,500	\$131,250	\$150,000	\$168,750	\$187,500	\$206,250	\$243,750	\$281,250	\$300,000													
						Interest	\$93,750	\$112,500	\$131,250	\$150,000	\$168,750	\$187,500	\$206,250	\$243,750	\$281,250	\$300,000	\$328,750	\$367,500	\$406,250	\$445,000	\$483,750	\$522,500	\$561,250	\$600,000	\$638,750	\$677,500	\$716,250	
						Total due	\$93,750	\$112,500	\$131,250	\$150,000	\$168,750	\$187,500	\$206,250	\$243,750	\$281,250	\$300,000	\$328,750	\$367,500	\$406,250	\$445,000	\$483,750	\$522,500	\$561,250	\$600,000	\$638,750	\$677,500	\$716,250	
						Principal	\$93,750	\$122,500	\$146,250	\$263,000	\$301,350	\$339,700	\$378,050	\$435,150	\$492,250	\$545,600	\$284,800	\$329,000	\$348,600	\$51,000	\$56,000	\$61,500	\$61,500	\$72,000	\$72,000	\$77,000	\$77,000	
						Interest	\$151,125	\$294,250	\$287,406	\$276,590	\$262,364	\$246,221	\$228,160	\$207,713	\$184,411	\$158,198	\$137,154	\$121,513	\$104,381	\$96,148	\$93,193	\$90,086	\$86,829	\$83,282	\$79,448	\$75,363		
						Total due	\$244,875	\$416,750	\$433,656	\$539,590	\$563,714	\$585,921	\$606,210	\$642,863	\$676,661	\$703,798	\$421,954	\$450,513	\$452,981	\$147,148	\$149,193	\$151,586	\$148,329	\$155,282	\$151,448	\$152,363		
						Principal	\$93,750	\$122,500	\$146,250	\$263,000	\$301,350	\$339,700	\$378,050	\$435,150	\$492,250	\$545,600	\$284,800	\$329,000	\$348,600	\$51,000	\$56,000	\$61,500	\$61,500	\$72,000	\$72,000	\$77,000	\$77,000	
						Interest	\$151,125	\$294,250	\$287,406	\$276,590	\$262,364	\$246,221	\$228,160	\$207,713	\$184,411	\$158,198	\$137,154	\$121,513	\$104,381	\$96,148	\$93,193	\$90,086	\$86,829	\$83,282	\$79,448	\$75,363		
Stinson	1	\$360,000	6	Jan. 1	Principal	\$14,400	\$10,800	\$10,800	\$14,400	\$14,400	\$14,400	\$14,400	\$14,400	\$18,000	\$18,000	\$18,000	\$18,000	\$21,600	\$21,600	\$21,600	\$21,600	\$25,200	\$25,200	\$28,800	\$28,800			
						Interest	\$45,012	\$20,736	\$20,088	\$19,440	\$18,576	\$17,712	\$16,848	\$15,984	\$14,904	\$13,824	\$12,744	\$11,664	\$10,584	\$9,504	\$8,424	\$7,344	\$6,264	\$5,184	\$4,104	\$3,024	\$1,944	
						Total due	\$45,012	\$35,136	\$30,888	\$30,240	\$32,976	\$32,112	\$31,248	\$30,384	\$32,904	\$31,824	\$30,774	\$29,664	\$31,968	\$30,672	\$29,376	\$28,080	\$30,168	\$28,656	\$30,528	\$30,528		
Table Mountain	2	\$187,000	6	July 1	Principal																							
						Interest	\$11,110	\$11,220	\$11,220	\$11,220	\$11,220	\$11,220	\$11,220	\$11,220	\$11,220	\$11,220	\$11,220	\$11,220	\$11,220	\$11,220	\$11,220	\$11,220	\$11,220	\$11,220	\$11,220	\$11,220		
						Total due	\$11,110	\$11,220	\$11,220	\$11,220	\$11,220	\$11,220	\$11,220	\$11,220	\$11,220	\$11,220	\$11,220	\$11,220	\$11,220	\$11,220	\$11,220	\$11,220	\$11,220	\$11,220	\$11,220	\$11,220	\$11,220	
Terra Bella	1	\$875,500	6	Nov. 1	Principal	\$32,500	\$25,000	\$40,000	\$40,000	\$45,000	\$50,000	\$30,000	\$50,000	\$59,000	\$60,000	\$35,000	\$57,000	\$70,000	\$79,000	\$93,000	\$110,000							
						Interest	\$26,265	\$50,330	\$48,680	\$46,280	\$43,830	\$41,080	\$38,280	\$36,280	\$33,190	\$29,640	\$26,290	\$23,970	\$20,420	\$16,130	\$11,250							
						Total due	\$58,765	\$75,330	\$88,680	\$86,280	\$88,830	\$91,080	\$68,280	\$86,280	\$92,190	\$89,640	\$61,290	\$80,970	\$90,420	\$95,130	\$104,250	\$115,500						

GENERAL STATE OF TEXAS, DEPARTMENT OF COMMERCE, DIVISION OF COMMERCE, BUREAU OF COMMERCE, OFFICE OF THE COMMISSIONER, MEMPHIS, TENNESSEE, JANUARY 1900.

Main data table with multiple columns and rows, containing numerical and textual information.

Summary table located on the right side of the page, containing aggregated data.

TABLE VI—Continued
ANNUAL OBLIGATIONS OF CALIFORNIA IRRIGATION DISTRICTS, FROM 1931-1950 ON BONDS OUTSTANDING AFTER JANUARY 1, 1931, AND ALSO FACE VALUE OF BONDS MATURING SERIALLY AFTER 1950
(Totals for each district in bold face type)

Name of district	Number of bond issues	Total bonds outstanding January 1, 1931	Interest rate, per cent	Date on which annual payments are due	Payments in 1931 after January 1	Payments due annually from 1932 to 1950																	Total bonds outstanding present issue, December 31, 1950			
						1932	1933	1934	1935	1936	1937	1938	1939	1940	1941	1942	1943	1944	1945	1946	1947	1948		1949	1950	
Thermalito	2	\$320,000																						\$107,000		
	1	270,000	6	Jan. 1																				62,000		
	2	50,000	6	Jan. 1																				45,000		
					Principal																					
					Interest	\$9,600	\$19,200	\$19,200	\$5,000	\$6,000	\$8,000	\$8,000	\$11,000	\$11,000	\$11,000	\$11,000	\$13,000	\$14,000	\$13,000	\$14,000	\$16,000	\$16,000	\$16,000	\$19,000		
					Total due	\$9,600	\$19,200	\$19,200	\$23,900	\$24,540	\$26,060	\$25,580	\$27,920	\$27,260	\$26,600	\$25,940	\$27,160	\$27,320	\$25,540	\$25,700	\$26,740	\$26,720	\$25,700	\$24,680	\$27,420	
Tracy-Clover	1	\$52,170	6	Jan. 1																				\$28,000		
					Principal																					
					Interest	\$1,565	\$3,120	\$3,120	\$3,120	\$3,120	\$3,120	\$3,120	\$3,120	\$3,120	\$3,120	\$2,170	\$2,000	\$2,000	\$2,000	\$2,000	\$2,000	\$2,000	\$2,000	\$2,000	24,170	
					Total due	\$1,565	\$3,120	\$3,120	\$3,120	\$3,120	\$3,120	\$3,120	\$3,120	\$3,120	\$5,170	\$4,880	\$4,760	\$4,640	\$4,520	\$4,400	\$4,280	\$4,160	\$4,040	\$3,920	\$3,800	\$3,680
Tranquillity	1	\$250,000	5½	Jan. 1																				\$81,000		
					Principal																					
					Interest	\$20,625	\$6,000	\$3,000	\$4,000	\$4,000	\$4,000	\$5,000	\$6,000	\$6,000	\$7,000	\$8,000	\$9,000	\$10,000	\$11,000	\$12,000	\$13,000	\$14,000	\$15,000	\$16,000	81,000	
					Total due	\$20,625	\$19,420	\$16,255	\$17,035	\$16,815	\$16,595	\$17,320	\$17,990	\$17,660	\$18,275	\$18,835	\$19,340	\$19,790	\$20,185	\$20,525	\$20,810	\$21,040	\$21,215	\$21,335	\$20,455	
Tule	1	\$806,000	6	Jan. 1																						
					Principal																					
					Interest	\$296,720	\$172,000	\$42,000	\$45,000	\$48,000	\$51,000	\$54,000	\$57,000	\$60,000	\$64,000	\$68,000	\$72,000	\$73,000								
					Total due	\$296,720	\$210,040	\$77,520	\$77,840	\$77,940	\$77,880	\$77,640	\$77,220	\$76,620	\$76,780	\$76,700	\$76,380	\$77,380								
Turlock	9	\$6,929,900																						\$757,400		
	1 Ref.	556,000	5	Jan. 1																						
	1	109,900	5	Jan. 1																						
	2	100,000	5	July 1	\$5,000																					
	3	1,206,000	5	Jan. 1																						
	4	2,570,000	6	July 1																						
	5	1,028,000	6	July 1																						
	6	510,000	5½	July 1																						
	7	250,000	5	Jan. 1																						
	8	600,000	5	July 1																						
					Principal	\$5,000	\$223,300	\$240,360	\$257,420	\$272,380	\$283,540	\$245,600	\$282,660	\$295,780	\$308,900	\$322,160	\$336,200	\$351,300	\$367,300	\$384,400	\$402,400	\$371,400	\$385,400	\$406,500	\$430,500	
					Interest	192,513	374,385	362,392	349,546	337,547	324,900	309,825	296,037	280,768	264,968	260,138	236,759	216,697	195,716	173,754	150,752	127,890	105,288	81,646	56,663	
					Total due	\$197,513	\$597,685	\$602,752	\$606,966	\$609,927	\$608,440	\$555,425	\$578,697	\$576,548	\$573,868	\$582,298	\$572,959	\$567,997	\$563,016	\$558,154	\$553,152	\$499,290	\$490,688	\$488,146	\$487,163	
Vandalia	1	\$186,900	6	Jan. 1																						
					Principal																					
					Interest	\$5,607	\$7,350	\$7,350	\$8,400	\$8,400	\$9,450	\$9,450	\$10,500	\$10,500	\$11,550	\$12,600	\$12,600	\$13,650	\$14,700	\$15,750	\$16,800	\$17,850	\$17,850			
					Total due	\$5,607	\$18,123	\$17,682	\$18,228	\$17,724	\$18,207	\$17,640	\$18,060	\$17,430	\$17,787	\$18,081	\$17,325	\$17,556	\$17,724	\$17,829	\$17,871	\$18,921				
Vista	1	\$1,700,000	6	Jan. 1																				\$1,462,000		
					Principal																					
					Interest	\$51,000	\$102,000	\$102,000	\$102,000	\$102,000	\$102,000	\$102,000	\$102,000	\$102,000	\$102,000	\$102,000	\$102,000	\$102,000	\$102,000	\$102,000	\$102,000	\$102,000	\$102,000	\$102,000	\$102,000	
					Total due	\$51,000	\$102,000	\$102,000	\$102,000	\$102,000	\$102,000	\$102,000	\$102,000	\$102,000	\$102,000	\$102,000	\$102,000	\$102,000	\$102,000	\$102,000	\$102,000	\$102,000	\$102,000	\$102,000	\$102,000	
Waterford	2	\$637,050																								
	1	446,400	6	Oct. 1																						
	2	190,650	5½	July 1																						
					Principal	\$19,075	\$19,075	\$24,750	\$26,800	\$33,500	\$37,875	\$37,875	\$40,200	\$41,225	\$42,250	\$42,250	\$47,925	\$52,575	\$61,875	\$67,550						
					Interest	18,635	35,801	34,584	33,073	31,380	29,330	27,119	24,873	22,495	20,060	17,596	15,133	12,572	9,703	6,486						
					Total due	\$37,708	\$54,876	\$59,334	\$59,873	\$64,880	\$67,205	\$64,994	\$65,073	\$63,720	\$62,310	\$59,846	\$57,383	\$60,497	\$62,278	\$68,361	\$70,303					

ANNUAL PRODUCTIONS OF LUMBER, BURNING WOOD, AND BARK IN BRITISH COLUMBIA, 1940-53

Values in thousands of cubic feet

Year	Production of Lumber																Production of Burning Wood	Production of Bark
	1940	1941	1942	1943	1944	1945	1946	1947	1948	1949	1950	1951	1952	1953	1954	1955		
1940	2,180	2,150	2,000	2,000	2,000	1,900	1,800	1,700	1,600	1,500	1,400	1,300	1,200	1,100	1,000	900	2,200	100
1941	2,200	2,100	2,000	2,000	1,900	1,800	1,700	1,600	1,500	1,400	1,300	1,200	1,100	1,000	900	800	2,200	100
1942	2,200	2,100	2,000	2,000	1,900	1,800	1,700	1,600	1,500	1,400	1,300	1,200	1,100	1,000	900	800	2,200	100
1943	2,200	2,100	2,000	2,000	1,900	1,800	1,700	1,600	1,500	1,400	1,300	1,200	1,100	1,000	900	800	2,200	100
1944	2,200	2,100	2,000	2,000	1,900	1,800	1,700	1,600	1,500	1,400	1,300	1,200	1,100	1,000	900	800	2,200	100
1945	2,200	2,100	2,000	2,000	1,900	1,800	1,700	1,600	1,500	1,400	1,300	1,200	1,100	1,000	900	800	2,200	100
1946	2,200	2,100	2,000	2,000	1,900	1,800	1,700	1,600	1,500	1,400	1,300	1,200	1,100	1,000	900	800	2,200	100
1947	2,200	2,100	2,000	2,000	1,900	1,800	1,700	1,600	1,500	1,400	1,300	1,200	1,100	1,000	900	800	2,200	100
1948	2,200	2,100	2,000	2,000	1,900	1,800	1,700	1,600	1,500	1,400	1,300	1,200	1,100	1,000	900	800	2,200	100
1949	2,200	2,100	2,000	2,000	1,900	1,800	1,700	1,600	1,500	1,400	1,300	1,200	1,100	1,000	900	800	2,200	100
1950	2,200	2,100	2,000	2,000	1,900	1,800	1,700	1,600	1,500	1,400	1,300	1,200	1,100	1,000	900	800	2,200	100
1951	2,200	2,100	2,000	2,000	1,900	1,800	1,700	1,600	1,500	1,400	1,300	1,200	1,100	1,000	900	800	2,200	100
1952	2,200	2,100	2,000	2,000	1,900	1,800	1,700	1,600	1,500	1,400	1,300	1,200	1,100	1,000	900	800	2,200	100
1953	2,200	2,100	2,000	2,000	1,900	1,800	1,700	1,600	1,500	1,400	1,300	1,200	1,100	1,000	900	800	2,200	100
1954	2,200	2,100	2,000	2,000	1,900	1,800	1,700	1,600	1,500	1,400	1,300	1,200	1,100	1,000	900	800	2,200	100
1955	2,200	2,100	2,000	2,000	1,900	1,800	1,700	1,600	1,500	1,400	1,300	1,200	1,100	1,000	900	800	2,200	100

ANNUAL OBLIGATIONS OF CALIFORNIA IRRIGATION DISTRICTS, FROM 1931-1950 ON BONDS OUTSTANDING AFTER JANUARY 1, 1931, AND ALSO FACE VALUE OF BONDS MATURING SERIALLY AFTER 1950

(Totals for each district in bold face type)

Name of district	Number of bond issues	Total bonds outstanding January 1, 1931	Interest rate, per cent	Date on which annual payments are due	Payments in 1931 after January 1	Payments due annually from 1932 to 1950																Total bonds outstanding present issue, December 31, 1950				
						1932	1933	1934	1935	1936	1937	1938	1939	1940	1941	1942	1943	1944	1945	1946	1947		1948	1949	1950	
West Side	4	\$528,500																						\$208,100		
	1	295,000	6	Jan. 1																				141,600		
	2	100,000	6	July 1																				54,000		
	3	120,000	6	Jan. 1																						
	4	13,500	6	Jan. 1																				12,500		
					Principal	\$15,000	\$15,000	\$15,000	\$15,000	\$15,000	\$15,000	\$20,900	\$22,900	\$10,850	\$11,850	\$14,800	\$15,800	\$15,800	\$18,750	\$19,750	\$19,750	\$19,750	\$19,750	\$23,700		
					Interest	30,810	29,910	29,010	28,110	27,210	26,310	25,056	24,642	23,091	22,410	21,522	20,604	19,656	18,708	17,583	16,428	15,243	14,058	12,636		
					Total due	\$15,855	\$45,810	\$44,910	\$44,010	\$43,110	\$42,210	\$41,310	\$45,956	\$47,542	\$33,941	\$34,260	\$36,322	\$36,404	\$35,456	\$34,508	\$36,333	\$36,178	\$34,993	\$33,808	\$36,336	
West Stanislaus	1	\$1,175,000	6	July 1																				\$585,000		
					Principal	\$10,000	\$10,000	\$10,000	\$12,000	\$12,000	\$20,000	\$20,000	\$20,000	\$25,000	\$25,000	\$30,000	\$30,000	\$35,000	\$35,000	\$35,000	\$50,000	\$61,000	\$70,000	\$80,000	585,000	
					Interest	70,200	69,600	69,000	68,340	67,820	66,660	65,460	64,260	62,910	61,410	59,760	57,960	56,010	53,910	51,810	49,260	45,930	42,000	37,500		
					Total due	\$35,250	\$80,200	\$79,600	\$80,340	\$79,820	\$86,660	\$85,460	\$84,260	\$87,910	\$86,410	\$89,760	\$87,960	\$91,010	\$88,910	\$86,810	\$99,260	\$106,930	\$112,000	\$117,500		
Williams	4	\$569,000																						\$325,000		
	1	58,000	6	Jan. 1		\$41,000	\$7,000	\$4,000	\$6,000																	
	2 1 Ref.	379,000	6	Jan. 1																						
	2 2d Div.	115,000	6	Jan. 1																						
	3	17,000	6	Jan. 1																						
					Principal	\$41,000	\$7,000	\$4,000	\$6,000																	
					Interest	167,250	31,680	31,260	31,020	30,660	30,660	30,660	30,660	30,660	30,660	29,760	28,860	27,960	26,700	25,440	24,180	22,620	21,060	19,500		
					Total due	\$167,250	\$72,680	\$38,260	\$35,020	\$36,660	\$30,660	\$30,660	\$30,660	\$30,660	\$30,660	\$44,760	\$43,860	\$42,960	\$47,700	\$46,440	\$45,180	\$48,620	\$47,060	\$45,500		
Woodbridge	1	\$315,000	5½	Jan. 1																				\$80,000		
					Principal	\$5,000	\$10,000	\$10,000	\$10,000	\$10,000	\$10,000	\$10,000	\$10,000	\$10,000	\$10,000	\$15,000	\$15,000	\$15,000	\$15,000	\$15,000	\$15,000	\$20,000	\$20,000	\$20,000		
					Interest	8,663	17,050	16,500	15,950	14,850	14,300	13,750	13,200	12,650	12,100	11,550	10,725	9,900	9,075	8,250	7,425	6,600	5,500	4,400		
					Total due	\$8,663	\$22,050	\$26,500	\$25,950	\$24,850	\$24,300	\$23,750	\$23,200	\$22,650	\$22,100	\$21,550	\$25,725	\$24,900	\$24,075	\$23,250	\$22,425	\$21,600	\$25,500	\$24,400		
Buena Vista Water Storage	1	\$96,491,591				\$6,374,363	\$7,676,521	\$7,369,277	\$7,388,925	\$7,541,902	\$7,597,156	\$7,526,215	\$7,614,412	\$7,675,397	\$7,674,739	\$7,189,762	\$6,909,957	\$6,824,422	\$6,340,469	\$6,353,725	\$6,423,289	\$5,963,931	\$5,973,877	\$5,816,463	\$5,711,002	\$37,698,690
		\$942,731	6	July 1																				\$676,500		
					Principal				\$9,731	\$9,500	\$9,500	\$9,500	\$9,500	\$9,500	\$9,500	\$9,500	\$9,500	\$9,500	\$28,500	\$28,500	\$28,500	\$28,500	\$28,500	\$28,500		
					Interest	28,282	56,564	56,564	56,564	56,272	55,695	55,125	54,555	53,985	53,415	52,845	52,275	51,705	51,135	49,995	48,285	46,575	44,865	43,155	41,445	
					Total due	\$28,282	\$56,564	\$56,564	\$56,564	\$66,003	\$65,195	\$64,625	\$64,055	\$63,485	\$62,915	\$62,345	\$61,775	\$61,205	\$60,635	\$78,495	\$76,785	\$75,075	\$73,365	\$71,655	\$69,945	
Totals		\$97,434,322				\$6,402,645	\$7,232,535	\$7,425,841	\$7,445,489	\$7,607,905	\$7,662,351	\$7,590,840	\$7,678,467	\$7,738,882	\$7,737,654	\$7,252,107	\$6,971,732	\$6,885,627	\$6,401,104	\$6,432,220	\$6,500,074	\$6,039,006	\$6,047,242	\$5,888,118	\$5,780,947	\$38,375,190

¹ Includes bond maturities in default.
² Includes bond interest in default.

TABLE VII
BOND OBLIGATIONS PER ACRE OF CALIFORNIA IRRIGATION DISTRICTS
JANUARY 1, 1931

District	Year formed	Estimated area		Bonds outstanding, total	Bonds outstanding per acre	
		Gross acres	Irrigable acres		Gross area	Irrigable area
Alpaugh.....	1915	8,133	8,132	\$254,700	\$31 32	\$31 32
Alta.....	1888	129,300	112,600	229,500	1 77	2 04
Anderson-Cottonwood.....	1914	32,000	28,064	1,150,000	35 94	40 98
Banta-Carbona.....	1921	15,624	15,156	1,137,060	72 78	75 02
Baxter Creek.....	1917	9,336	8,636	511,000	54 73	59 17
Beaumont.....	1919	4,141	3,161	254,000	61 34	80 35
Big Springs.....	1927	3,611	2,546	63,000	17 45	24 75
Butte Valley.....	1920	28,686	17,500	594,000	20 71	33 94
Byron-Bethany.....	1919	17,200	12,544	596,000	34 65	47 51
Camp Far West.....	1924	4,089	2,658	179,000	43 78	67 34
Carmichael.....	1916	3,138	3,038	96,600	30 78	31 80
Carpenter.....	1927	1,328	1,320	200,000	150 60	151 52
Citrus Heights.....	1920	3,158	3,066	183,000	57 95	59 69
Compton-Delevan.....	1920	12,652	11,500	384,000	30 35	33 39
Consolidated.....	1921	149,047	145,757	235,000	1 58	1 61
Corcoran.....	1919	51,606	51,000	750,000	14 53	14 71
Cordua.....	1919	5,461	5,421	258,000	47 24	47 59
Deer Creek.....	1926	1,907	1,663	20,000	10 49	12 03
East Contra Costa.....	1926	20,200	19,760	1,236,000	61 19	62 55
El Camino.....	1921	7,549	7,549	423,000	56 03	56 03
El Dorado.....	1925	30,000	19,905	688,000	22 93	34 56
Fair Oaks.....	1917	3,900	3,400	116,000	29 74	34 12
Fresno.....	1920	243,100	239,080	255,000	1 05	1 07
Glenn-Colusa.....	1920	122,032	119,021	1,551,500	12 71	13 03
Grenada.....	1921	4,948	3,510	240,000	48 50	68 38
Hot Spring Valley.....	1919	9,497	9,000	102,000	10 74	11 33
Imperial.....	1911	612,200	522,200	14,850,000	24 26	28 44
Jacinto.....	1917	11,554	11,496	168,000	14 54	14 61
James.....	1920	26,266	18,266	995,000	37 88	54 47
La Canada.....	1924	1,294	1,239	328,000	253 48	264 73
Laguna.....	1920	34,858	30,000	53,000	1 52	1 77
Lakeside.....	1924	320	288	35,000	109 38	121 53
La Mesa, Lemon Grove, Spring Valley.....	1913	19,245	13,550	2,056,000	106 83	151 73
Lindsay-Strathmore.....	1915	15,246	14,540	1,561,000	102 39	107 36
Littlerock Creek.....	1892	3,073	2,877	360,000	117 50	125 13
Maxwell.....	1918	8,820	6,000	234,000	26 53	39 00
Merced.....	1919	190,025	171,709	16,250,000	85 52	94 64
Modesto.....	1887	81,203	78,778	4,183,381	51 52	53 10
Montague.....	1925	26,117	18,531	1,395,000	53 41	75 28
Nagle-Burk.....	1920	2,871	2,846	186,000	64 79	65 35
Nevada.....	1921	266,000	164,000	8,035,000	30 21	48 99
Newport Heights.....	1918	1,503	1,503	160,000	106 45	106 45
Newport Mesa.....	1918	694	400	50,000	72 05	125 00
Oakdale.....	1909	74,240	66,800	3,455,000	46 54	51 72
Oroville-Wyandotte.....	1919	24,100	22,300	1,095,000	45 44	49 10
Palmdale.....	1918	4,756	4,698	445,000	93 57	94 72
Palo Verde.....	1923	88,693	70,000	4,230,330	47 61	60 43
Paradise.....	1916	11,260	9,836	481,000	42 72	48 90
Potter Valley.....	1924	5,042	4,195	97,000	19 24	23 12
Princeton-Codora-Glenn.....	1916	13,656	12,290	175,000	12 81	14 24
Provident.....	1918	22,805	21,000	1,004,000	44 03	47 81
Ramona.....	1925	660	594	91,000	137 88	153 20
Riverdale.....	1920	15,830	14,800	50,000	3 16	3 38
San Diego.....	1922	3,900	3,700	389,000	99 74	105 14
Santa Fe.....	1923	10,106	6,980	700,000	69 27	100 29
San Ysidro.....	1911	502	462	25,000	49 80	54 11
Scott Valley.....	1917	5,125	4,000	69,000	13 46	17 25
Serrano.....	1927	1,499	1,319	200,000	133 42	151 63
South Montebello.....	1922	827	827	87,500	105 80	105 80
South San Joaquin.....	1909	71,112	66,465	5,940,000	83 53	89 37

DIVISION OF WATER RESOURCES

TABLE VII—Continued
 BOND OBLIGATIONS PER ACRE OF CALIFORNIA IRRIGATION DISTRICTS
 JANUARY 1, 1931

District	Year formed	Estimated area		Bonds outstanding, total	Bonds outstanding per acre	
		Gross acres	Irrigable acres		Gross area	Irrigable area
Stinson.....	1921	11,150	11,000	\$360,000	\$32 29	\$32 73
Table Mountain.....	1922	1,955	1,780	187,000	95 65	105 06
Terra Bella.....	1915	12,285	12,070	875,500	71 27	72 54
Thermalito.....	1922	3,110	2,940	320,000	102 89	108 84
Tracy-Clover.....	1922	1,084	1,034	52,170	48 13	49 49
Tranquillity.....	1918	10,750	10,190	250,000	23 26	24 53
Tule.....	1920	15,015	9,795	806,000	53 68	82 29
Turlock.....	1887	181,556	179,278	6,929,900	38 17	38 65
Vandalia.....	1923	1,276	1,253	186,900	146 47	149 62
Vista.....	1923	18,162	14,610	1,700,000	93 60	116 36
Waterford.....	1913	14,110	11,424	637,050	45 15	55 76
West Side.....	1915	11,828	11,811	528,500	44 68	44 75
West Stanislaus.....	1920	22,137	22,000	1,175,000	53 08	53 41
Williams.....	1920	9,009	8,000	569,000	63 16	71 13
Woodbridge.....	1924	14,164	13,566	315,000	22 24	23 22
Totals and averages.....		2,904,636	2,534,227	\$96,031,591	\$33 06	\$37 89
Buena Vista Water Storage District...	1928	78,596	50,400	942,731	11 99	18 70
Totals and averages.....		2,983,232	2,584,627	\$96,974,322	\$32 51	\$37 52

Note—Owens Valley irrigation district has \$471,500 bonds outstanding which are not included in above table as these obligations are assumed by the City of Los Angeles.

PUBLICATIONS
DIVISION OF WATER RESOURCES

PUBLICATIONS OF THE
DIVISION OF WATER RESOURCES
 DEPARTMENT OF PUBLIC WORKS
 STATE OF CALIFORNIA

When the Department of Public Works was created in July, 1921, the State Water Commission was succeeded by the Division of Water Rights, and the Department of Engineering was succeeded by the Division of Engineering and Irrigation in all duties except those pertaining to State Architect. Both the Division of Water Rights and the Division of Engineering and Irrigation functioned until August, 1929, when they were consolidated to form the Division of Water Resources.

STATE WATER COMMISSION

First Report, State Water Commission, March 24 to November 1, 1912.

Second Report, State Water Commission, November 1, 1912, to April 1, 1914.

*Biennial Report, State Water Commission, March 1, 1915, to December 1, 1916.

Biennial Report, State Water Commission, December 1, 1916, to September 1, 1918.

Biennial Report, State Water Commission, September 1, 1918, to September 1, 1920.

DIVISION OF WATER RIGHTS

*Bulletin No. 1—Hydrographic Investigation of San Joaquin River, 1920—1923.

*Bulletin No. 2—Kings River Investigation, Water Master's Reports, 1918—1923.

*Bulletin No. 3—Proceedings First Sacramento-San Joaquin River Problems Conference, 1924.

*Bulletin No. 4—Proceedings Second Sacramento-San Joaquin River Problems Conference, and Water Supervisor's Report, 1924.

*Bulletin No. 5—San Gabriel Investigation—Basic Data, 1923—1926.

Bulletin No. 6—San Gabriel Investigation—Basic Data, 1926—1928.

Bulletin No. 7—San Gabriel Investigation—Analysis and Conclusions, 1929.

*Biennial Report, Division of Water Rights, 1920—1922.

*Biennial Report, Division of Water Rights, 1922—1924.

Biennial Report, Division of Water Rights, 1924—1926.

Biennial Report, Division of Water Rights, 1926—1928.

DEPARTMENT OF ENGINEERING

*Bulletin No. 1—Cooperative Irrigation Investigations in California, 1912—1914.

*Bulletin No. 2—Irrigation Districts in California, 1887—1915.

Bulletin No. 3—Investigations of Economic Duty of Water for Alfalfa in Sacramento Valley, California, 1915.

*Bulletin No. 4—Preliminary Report on Conservation and Control of Flood Waters in Coachella Valley, California, 1917.

*Bulletin No. 5—Report on the Utilization of Mojave River for Irrigation in Victor Valley, California, 1918.

*Bulletin No. 6—California Irrigation District Laws, 1919 (now obsolete).

Bulletin No. 7—Use of water from Kings River, California, 1918.

*Bulletin No. 8—Flood Problems of the Calaveras River, 1919.

Bulletin No. 9—Water Resources of Kern River and Adjacent Streams and Their Utilization, 1920.

*Biennial Report, Department of Engineering, 1907—1908.

*Biennial Report, Department of Engineering, 1908—1910.

*Biennial Report, Department of Engineering, 1910—1912.

*Biennial Report, Department of Engineering, 1912—1914.

*Biennial Report, Department of Engineering, 1914—1916.

*Biennial Report, Department of Engineering, 1916—1918.

*Biennial Report, Department of Engineering, 1918—1920.

*Reports and Bulletins out of print. These may be borrowed by your local library from the California State Library at Sacramento, California.

DIVISION OF WATER RESOURCES

Including Reports of the Former Division of Engineering and Irrigation

- *Bulletin No. 1—California Irrigation District Laws, 1921 (now obsolete).
- *Bulletin No. 2—Formation of Irrigation Districts, Issuance of Bonds, etc., 1922.
- Bulletin No. 3—Water Resources of Tulare County and Their Utilization, 1922.
- Bulletin No. 4—Water Resources of California, 1923.
- Bulletin No. 5—Flow in California Streams, 1923.
- Bulletin No. 6—Irrigation Requirements of California Lands, 1923.
- *Bulletin No. 7—California Irrigation District Laws, 1923 (now obsolete).
- *Bulletin No. 8—Cost of Water to Irrigators in California, 1925.
- Bulletin No. 9—Supplemental Report on Water Resources of California, 1925.
- *Bulletin No. 10—California Irrigation District Laws, 1925 (now obsolete).
- Bulletin No. 11—Ground Water Resources of Southern San Joaquin Valley, 1927.
- Bulletin No. 12—Summary Report on the Water Resources of California and a Coordinated Plan for Their Development, 1927.
- Bulletin No. 13—The Development of the Upper Sacramento River, containing U. S. R. S. Cooperative Report on Iron Canyon Project, 1927.
- Bulletin No. 14—The Control of Floods by Reservoirs, 1928.
- *Bulletin No. 18—California Irrigation District Laws, 1927 (now obsolete).
- Bulletin No. 18—California Irrigation District Laws, 1929 Revision.
- Bulletin No. 19—Santa Ana Investigation, Flood Control and Conservation (with packet of maps), 1928.
- Bulletin No. 20—Kennett Reservoir Development, an Analysis of Methods and Extent of Financing by Electric Power Revenue, 1929.
- Bulletin No. 21—Irrigation Districts in California, 1929.
- Bulletin No. 21-A—Report on Irrigation Districts in California for the Year 1929, 1930.
- Bulletin No. 21-B—Report on Irrigation Districts in California for the year 1930, 1931.
- Bulletin No. 22—Report on Salt Water Barrier (two volumes), 1929.
- Bulletin No. 23—Report of Sacramento-San Joaquin Water Supervisor, 1924-1928.
- Bulletin No. 24—A Proposed Major Development on American River, 1929.
- Bulletin No. 25—Report to Legislature of 1931 on State Water Plan, 1930.
- Bulletin No. 28-A—Industrial Survey of Upper San Francisco Bay Area, 1930.
- Bulletin No. 31—Santa Ana River Basin, 1930.
- Bulletin No. 32—South Coastal Basin, a Cooperative Symposium, 1930.
- Bulletin No. 33—Rainfall Penetration and Consumptive Use of Water in Santa Ana Valley and Coastal Plain.
- Bulletin No. 34—Permissible Annual Charges for Irrigation Water in Upper San Joaquin Valley, 1930.
- Bulletin No. 35—Permissible Economic Rate of Irrigation Development in California, 1930.
- Bulletin No. 36—Cost of Irrigation Water in California, 1930.
- Biennial Report, Division of Engineering and Irrigation, 1920-1922.
- Biennial Report, Division of Engineering and Irrigation, 1922-1924.
- Biennial Report, Division of Engineering and Irrigation, 1924-1926.

COOPERATIVE AND MISCELLANEOUS REPORTS

- *Report of the Conservation Commission of California, 1912.
- *Irrigation Resources of California and Their Utilization (Bul. 254, Office of Exp. U. S. D. A.) 1913.
- *Report, State Water Problems Conference, November 25, 1916.
- *Report on Pit River Basin, April, 1915.
- *Report on Lower Pit River Project, July, 1915.
- *Report on Iron Canyon Project, 1914.
- *Report on Iron Canyon Project, California, May, 1920.
- *Sacramento Flood Control Project (Revised Plans), 1925.
- Report of Commission Appointed to Investigate Causes Leading to the Failure of St. Francis Dam, 1928.
- Report of the Joint Committee of the Senate and Assembly Dealing With the Water Problems of the State, 1929.
- Report of the California Joint Federal-State Water Resources Commission, 1930.
- Conclusions and Recommendations of the Report of the California Irrigation and Reclamation Financing and Refinancing Commission, 1930.
- Report of the Joint Committee of the Senate and Assembly Dealing with the Water Problems of the State, 1931.

*Reports and Bulletins out of print. These may be borrowed by your local library from the California State Library at Sacramento, California.

PAMPHLETS

Rules and Regulations Governing the Supervision of Dams in California, 1929.
Water Commission Act with Latest Amendments Thereto, 1929.
Rules and Regulations Governing the Appropriation of Water in California, 1930.
Rules and Regulations Governing the Determination of Rights to Use of Water in
Accordance with the Water Commission Act, 1925.
Tables of Discharge for Parshall Measuring Flumes, 1928.
General Plans, Specifications and Bills of Material for Six and Nine Inch Parshall
Measuring Flumes, 1930.

o

